

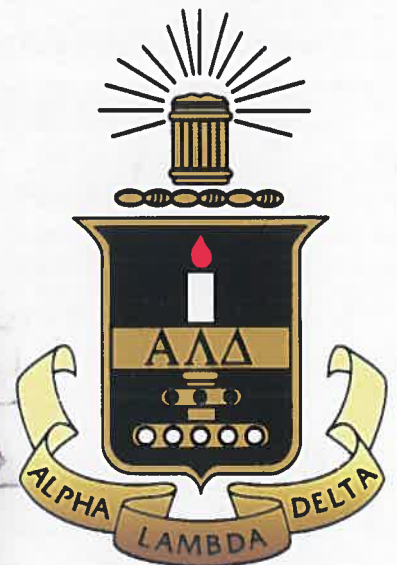
THE FLAME

Volume 42 2004

A Publication of National Alpha Lambda Delta



*Celebrating 80 Years of
Tradition, Honor, & Excellence*





Dr. Mike Nichols, Editor & Rachel H. Garza at the 2003 June Council Meeting in Baltimore, MD.

At the 1992 National Council Meeting, a mission statement and an editorial policy were adopted for *The Flame*.

MISSION STATEMENT

To communicate the activities, ideals, and accomplishments of Alpha Lambda Delta with the vision to create and project a positive image of the society as a progressive and relevant collegiate organization with a commitment toward excellence.

EDITORIAL POLICY

Alpha Lambda Delta reserves the right to exercise editorial decisions over written materials and/or articles submitted for publication. Content, design, and layout will be the decision of the editorial staff. As a courtesy to feature writers and contributors to *The Flame*, every attempt will be made to furnish advance copy of material as it will appear in print.

National Alpha Lambda Delta
Glenda Earwood, Executive Director
Lee Greenway, Director of
Communication
 P.O. Box 4403
 Macon, GA 31208-4403
 1-800-9ALPHA1
 FAX: 478-744-9924
 ald@mercer.edu
 www.mercer.edu/ald

Page design, layout, and graphics
 by Rachel H. Garza.

WHAT'S INSIDE

The Many Faces of Alpha Lambda Delta	2
2003 National Leadership Workshop	3
A Very Special Chapter Challenge	5
Books Connect Generations.	6
National Council News	7
Meet the President	9
New National Council Members	10
Call for Nominations & Applications.	10
In Appreciation for Dr. Patricia A. Graham.	11
Council Member Resolutions	12
ALD Advisor Awards.	13
2003-2004 Graduate Fellowship Recipients	15
2003-2004 Trow Undergraduate Scholars	17
ALD Chapter List	19
ALD Chapter Activities	20
California Dreamin'	23
2004 Chapter Anniversaries	31
Chapter Membership Awards.	35
New ALD Chapters	36
ALD Store	43
Order of the Torch	44





Dear Alpha Lambda Delta Members,

This photo is a favorite of mine. It depicts our Founder, Maria Leonard, gazing into a multi-faceted mirror. I'm sure that when this photo was taken, she had no idea of the far-reaching effects that her efforts to promote academic excellence would have nation-wide. The photo is also a great representation of what Alpha Lambda Delta has become -- an honor society with many different faces. Not only does Alpha Lambda Delta promote academic success, but also community service, personal development, and future enrichment.

Founded as an honor society for freshman women at the University of Illinois in 1924, ALD became co-ed in 1976 in response to Title IX. Its mission is to encourage superior academic achievement among students in their first year in institutions of higher education, to promote intelligent living and a continued high standard of learning, and to assist women and men in recognizing and developing meaningful goals for their roles in society.

STRUCTURE

Alpha Lambda Delta has more than 240 chapters throughout the nation, and more than 700,000 students have been initiated. The Society consists of active members, alumni, honorary members, faculty advisors, administrative advisors, and its governing body -- the National Council.

INSIGNIA

Alpha Lambda Delta's official symbol is a gold candle with its Greek letters superimposed on the candle holder. The society honor key and lapel pin depict this symbol. Colors of the society are red, gold, and white. The coat of arms is a gold-bordered black shield with a red-tipped white candle, above which is a white altar with an open book on it.

CHAPTERS

Chapter activities vary from campus to campus. Activities usually encourage, honor, and publicize scholarship among students. Many chapters also sponsor and/or participate in service projects on their campus or in the community. Chapters compete for the prestigious Order of the Torch Awards.

LEADERSHIP

The National Council of ALD hosts an annual workshop each year and invites chapters to send two officers and one advisor. All expenses are paid for by the National Council, with the exception of transportation to the workshop.

Students may participate in Alpha Lambda Delta at the national level in addition to serving as campus chapter officers. Three members represent the students at the annual National Council meeting, serve on committees, and work with campus chapters, professional council members, and council officers.

FEES

In an effort to reach as many deserving students as possible, ALD is committed to keeping national dues affordable. Each new member pays \$20 national dues. This is a lifetime membership fee and is paid only once. Initiates receive a certificate of membership and a key or lapel pin. The local chapter sets its own dues.

AWARDS

Sophomore members may compete for 35 Jo Anne J. Trow Scholarships that provide \$1000 to each recipient.

The National Council awards fifteen fellowships in the amount of \$3000, seven fellowships in the amount of \$5000, and the Maria Leonard Fellowship in the amount of \$7500 annually for one year of graduate study.

In honor of Maria Leonard, founder of the society, a Book Award is presented to the Alpha Lambda Delta graduating senior in each chapter who has achieved the highest cumulative GPA.

Please join me in celebrating Alpha Lambda Delta's 80th anniversary in 2004. We have so much to be proud of and to celebrate! Our members and chapter advisors are the keys to our success. Thank you for everything you do!

Sincerely,

Glenda Earwood

Glenda Earwood
Executive Director

Greetings from

California

Home of the
2003 National Leadership Workshop

Anaheim, California, was the site of the 2003 National Leadership Workshop. During the weekend of October 17-19, 2003, over 150 ALD Chapter Officers, Advisors, and National Council Members spent time learning about leadership strategies, membership recruitment, chapter programming, and also having fun.

Participants arrived at the Radisson Hotel Maingate on Friday night in time for the opening session, led by ALD Executive Director, Dr. Glenda Earwood, who outlined the weekend and introduced a very special keynote speaker, Ms. Nikki Stone, an Olympic Gold Medalist.

Nikki Stone is a Magna Cum Laude graduate of Union College in New York, and since her Olympic win, she has inspired audiences across the United States to "spread their wings." Nikki had a wonderful story to share that challenged ALD members to meet their difficulties head-on with a positive attitude. At the Olympic Games in Nagano, Nikki became America's first Gold Medalist in Inverted Aerial Skiing. What makes this accomplishment even more significant was the chronic injury that almost took her out of sports indefinitely. Her tenacity and refusal give up brought her through a difficult time and led her to explore the newly adopted Olympic sport of Inverted Aerial Skiing. Nikki proved to the world that she has what it takes to succeed as she earned 35 World Cup podiums, eleven World Cup titles, four National titles, and two overall World Grand Prix titles, in addition to her Olympic Gold Medal. The ALD audience rewarded her with a standing ovation for her words of wisdom and encouragement.

After Nikki's speech, the group plunged into a variety of exciting and fun activities, including icebreakers, the traditional t-shirt exchange, and a

The Governor took time out of his busy schedule to make an appearance in "cardboard!"



Olympic Gold Medalist and
ALD Keynote Speaker,
Nikki Stone

scavenger hunt. Through these activities, strangers became friends and everyone began to look forward to spending the next two days together.

While the students were expending their boundless energy with each other, National President, Dr. James Stemler, hosted a get-together for chapter advisors. This gathering gave advisors the chance to bond and talk with each other about chapter and advising issues.



Starting bright and early on Saturday morning, students and advisors attended workshops on such practical topics, such as:

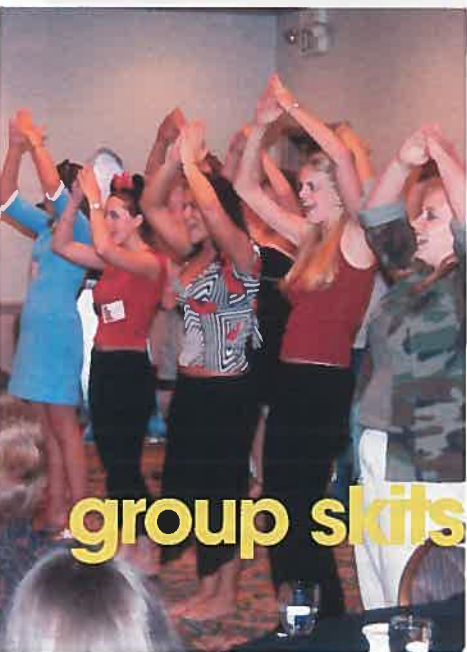
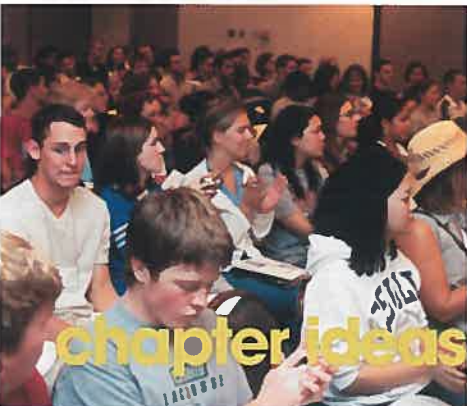
- * Leadership-It's More Than You Think
- * Student-Advisor Relationships-A Recipe for Success
- * Preparing for the Future-National Scholarships and Fellowships
- * Creativity in Chapter Programming
- * Effective Chapter Communication
- * Order of the Torch and Chapter Programming
- * Making A Difference-Having an Impact on Your Campus

After a morning full of information, conference participants were ready to see what California had to offer. Many took in an afternoon of sight-seeing, visiting Disneyland, sunning on the beach, and some serious shopping!

The Workshop reconvened that evening with a banquet, appropriately entitled "A Night on the Red Carpet." Many workshop participants took the opportunity to dress up like their favorite movie star or character. Others chose to dress to the nines for this very special event.

After dinner was served, it was time to make ALD chapter presentations. President James Stemler presided as many awards were given. Order of the Torch winning chapters were recognized. Executive Director Advisor Awards were bestowed, along with the Gold, Silver, and Bronze Chapter Membership Awards. Ms. Beverly Kellen, of the University of Alabama, was recognized as the "Outstanding Advisor of the Year." Ms. Kellen told the group how much Alpha Lambda Delta meant to her, and, as she is retiring after 30 years of service to the University, ALD would always be a highlight of her career.

In response to the many requests for a service project, the ALD National



Council organized a book drive for a local area children's home. All workshop attendees were challenged to bring books to be donated in a formal presentation at the conclusion of the banquet. Representatives from Hillview Acres Children's Home were in attendance at the banquet to accept the donation of books for their brand new library. Hillview Acres' Principal, Debbie Gonzalez, shared a video presentation and briefly talked about their mission to give everyone a first-hand look at the remarkable work done by the Home to help children deal with violence and disruption in their lives. There wasn't a dry eye in the room by the end of the presentation. Chapters gave generously and several hundred books were donated. However, this special event was made even more extraordinary when we learned of a special connection. The Hillview Acres Children's Home Library was started by Mrs. Anne Kerr, who is the niece of the first Executive Director of Alpha Lambda Delta, Mary Jane Stephenson.

The annual skit competition, which always provides great laughs and entertainment to conference participants, wrapped up the evening. The group skits were especially creative this year and it was difficult for the "Judges" to pick a winner.

Executive Director Glenda Earwood, Director of Communication Rachel Garza, and Members-at-Large Kim Reaves and Angela Congrove outlined the services offered to ALD chapters by the National Headquarters and the National Council.

The workshop was concluded with time for good-byes, exchanges of cell phone numbers and e-mail addresses, and promises to stay in touch. It was an amazing weekend during which everyone was inspired by the example set by Nikki Stone and the beauty of the children's faces depicted in the video from Hillview Acres Children's Home. Everyone left Anaheim inspired by new ideas and strategies and challenged to commit time and energy to building their ALD Chapters.

1964

The Flame

UNIVERSITY OF ALPHALAMBDA DELTA



Fourth Stipend To Provide \$1500



University of South Carolina

Alpha Lambda Delta will provide stipends to four members of the chapter at the University of South Carolina.

Dear Alpha Lambda Delta

"What needs to be done?" is a question that has been asked many times in the history of Alpha Lambda Delta. The answer is always the same: to provide a better education for our members.

Alpha Lambda Delta will provide stipends to four members of the chapter at the University of South Carolina. The stipends are provided to members who have demonstrated academic excellence and leadership potential.

40th Anniversary

HIGHLIGHTS:

- ~A fourth graduate fellowship was established in honor of Kathryn Sisson Phillips
- ~Nine new chapters were installed across the nation

1969

The Flame

UNIVERSITY OF ALPHALAMBDA DELTA



ALPHA LAMBDA DELTA MEETING

Alpha Lambda Delta members met for their annual meeting at the University of South Carolina. The meeting was held in a grand ballroom and featured a variety of activities.

ALD Installs New Chapters at Five Colleges

Washington State University, Georgetown College, Francis T. Nicholls State College, Carthage College, and Carson-Newman College.

The meeting was held in a grand ballroom and featured a variety of activities. The chapter members discussed the future of the organization and the importance of providing a quality education for our members.

45th Anniversary

HIGHLIGHTS:

- ~Five new chapters were installed at Washington State University, Georgetown College, Francis T. Nicholls State College, Carthage College, and Carson-Newman College

A Very Special CHAPTER CHALLENGE

Issued by Brittany Sheppe, University of South Carolina, at the 2003 National Leadership Workshop



My name is Brittany Sheppe, and I am the President of Alpha Lambda Delta at the University of South Carolina. I think we will agree that our chapters always want to encourage scholarship and academic success. We should now determine what steps to take to foster, promote, and support academic success and scholarship on our campuses. ALD members have a positive history of mentoring, providing programs for freshman, community service, and tutoring. Financial support should be added to this list.

My chapter at the University of South Carolina has a history of supporting scholarships given by National Alpha Lambda Delta. Although we started small, last year we were able to provide \$1000. We consider this an investment in ALD.

In honor of the 80th Anniversary of National Alpha Lambda Delta and to support the continued growth of national scholarships and fellowships awarded to ALD members, my chapter at the University of South Carolina would like to offer this challenge to all ALD chapters.

The University of South Carolina chapter will give at least \$.80 per member who joined this year. This donation will total \$400. By following the example set by the National Headquarters of ALD, what our chapter saves in postage and printing by utilizing e-mail will exceed the \$.80 per member that we are pledging to National ALD.

Giving to the national scholarship fund of Alpha Lambda Delta actually pays for itself. Through promoting Alpha Lambda Delta and heightening awareness of the scholarship fund, more of our members apply for the available undergraduate scholarships and graduate fellowships. The quality of our chapter's scholarship applicants has improved as their involvement with the chapter has increased.

Evidence of this can be seen as our chapter has produced a Trow Scholarship winner nearly every year, as well as many graduate fellowship winners.

Please accept our challenge of contributing to National Alpha Lambda Delta's Perpetual Fellowship Fund on our Society's 80th anniversary through a financial gift, whether it is \$.80 cents per member or the proceeds from a fund raising project, or, as in my chapter, by the careful management and budgeting of chapter funds through cutting costs. Thank you!!

Donations to the ALD Perpetual Fellowship Fund in honor of the Society's 80th Anniversary should be sent to:

Alpha Lambda Delta
P.O. Box 4403
Macon, GA 31208-4403
1-800-9ALPHA1
ald@mercer.edu
www.mercer.edu/ald



1984



60th Anniversary

HIGHLIGHTS:

- District Workshop held at the University of Texas, San Antonio
- 60th Anniversary Student-Endowed Fellowship was established
- The University of Illinois chapter hosted a 60th anniversary birthday party for Alpha Lambda Delta

1989



65th Anniversary

HIGHLIGHTS:

- The JoAnne Trow Award was established
- The "Order of the Torch Award" was established
- Travel grants were first given to chapters attending the National Workshop, which was held at Ohio State University
- Five new chapters were installed

NATIONAL COUNCIL NEWS

The Alpha Lambda Delta National Council Holds Its 2003 Annual Meeting in Baltimore

On June 25th, 2003, President Patricia Graham called the annual meeting of the National Council of Alpha Lambda Delta to order. It was Dr. Graham's 6th council meeting to preside over and her last as ALD President. As in previous years, the Council gathered to plan future directions, manage the Society's resources, provide service to individual chapters, and organize workshops and other activities for the next year. ALD continues to thrive with increasing membership and funding scholarships and fellowships, in spite of the challenging economy and competition from other honor societies. In fact, ALD initiated 25,875 new members last year, which represents a 3% increase in membership.

Members of the Council presented reports of their ALD activities that included representing ALD at national conferences, installing chapters,

presenting Order of the Torch awards, reviewing applications for Fellowships and Trow Scholarships, visiting other campuses to encourage formation of ALD chapters, and working hard to insure the success of their own local Chapter of Alpha Lambda Delta.

Dr. Graham installed three new members of the National Council:

- * Dr. Katherine Pedro Beardsley, the University of Maryland
- * Dr. Harry Hale, the University of Louisiana at Monroe
- * Ms. Kim Reaves, Auburn University

Executive Director, Dr. Glenda Earwood, outlined the many successes of the past year that included an increase in membership, a record number of new chapters, and some serious planning for the Society's 80th anniversary in 2004. This year, much



Front Row (L-R): Kris Guzman, Susan Huffman, Patricia Graham, James Stemler, Jonathan Hovda; Second Row (L-R): Mike Nichols, Harry Hale, Kathy Beardsley, Marva Watlington, Butch Hill, Angie Congrove, Kim Reaves, Rachel Garza, Glenda Earwood

Dr. Patricia Graham installs three new council members.

emphasis was placed on the retention of advisors, and an "E-Newsletter" was initiated by Mrs. Rachel Garza (then Director of Communication) which was sent to advisors via e-mail on a monthly basis. With National Headquarters' move to a paperless communication system, there has been a substantial budget reduction in shipping and printing.

Council Members also met with Mr. Frank Key of A.G. Edwards to explore how ALD could manage its funds for funding of scholarships and fellowships.



Council members also met with Dr. Rena Murphy of the University of Michigan who will serve as a consultant for the long range planning process.

After committee assignment and appointments, Dr. Graham concluded the annual meeting with a historical



Newly elected President James Stemler performs his first task as president - signing charters for new chapters.

first. Dr. James Stemler, Associate Dean and Director of the Honors Program at the University of Portland, was installed as the first male president of National Alpha Lambda Delta!

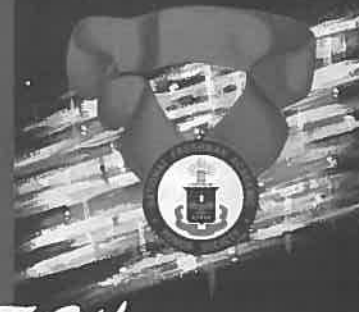
Resolutions were read for departing members of the Council, Marva Watlington, Jonathan Hovda, and Dr. Patricia Graham. In the final business of this annual meeting, the National Council established a \$5,000 graduate Fellowship named in honor of Dr. Patricia A. Graham of the University of Texas at San Antonio for her years of service to National Alpha Lambda Delta.

In the meetings which followed, many crucial issues were discussed and plans were made for chapter relationships, web site designs, rewarding and retaining advisors, the scholarship selection process, implementation of a service project for the national workshop in Anaheim, the fellowship selection process, publications, finances, drafting a budget, and much, much more.

Student Members-at-Large Angie Congrove and Kim Reaves smile for the camera!



1994 THE FLAME



70th anniversary

HIGHLIGHTS:

- ~ALD Executive Director, Barbara Quilling was elected as President of ACHS
- ~National Workshop was held in St. Louis, MO
- ~Chapters were installed at Chestnut Hill College, Cumberland College, and University of Massachusetts, Lowell

1999 THE FLAME



75th anniversary

HIGHLIGHTS:

- ~Trow Scholarships increased from \$150 to \$1000 each
- ~National Workshop held in Denver, CO
- ~Chapters were installed at Georgia College & State University and Shenandoah University
- ~The "Maintaining the Flame" Award was established

MEET THE PRESIDENT

Dr. James G. Stemler

Dr. James G. Stemler was installed as National President of Alpha Lambda Delta at the 2003 National Council meeting in Baltimore, Maryland. Dr. Stemler is the 16th President of Alpha Lambda Delta and the first male president.

Get to know the new ALD President through his interview conducted by Executive Director Glenda Earwood.



How did you become involved with Alpha Lambda Delta?

Stemler: The former Executive Director Barbara Quilling came to a conference in Portland in the mid-80s and invited me to dinner. At the time, the University of Portland was struggling with some retention issues and the idea of starting an honor society to recognize academic excellence among first year students sounded like a positive retention strategy. I helped write the petition for the new chapter which was installed on April 1, 1989, and have served as the chapter advisor ever since.



What kind of school is the University of Portland and what do you do there?

Stemler: Portland is a private, Catholic, liberal arts college with an enrollment of 3000 students. I am the Director of the Honors Program and Associate Dean of Arts and Sciences.



Dr. Graham installed Dr. Stemler as President (below). He enjoyed a special serenade by Marilyn Monroe (Council member Angie Congrove) at the 2003 National Workshop.



Tell us a little about your background.

Stemler: My academic education is in the field of sociology. I received my bachelor's degree at Indiana University, my master's from the University of West Virginia where I met my wife of 30 years, Michelle, and my Ph. D. is from the University of Cincinnati. Michelle and I met while working as tutors for Student Action for Appalachian Progress; she teaches high school Spanish.



How long have you been involved with Alpha Lambda Delta and in what capacities?

Stemler: During the summer of 1994, I received a phone call from Dr. Bill McKee asking me if I would be willing to serve as a member of the National Council. Since 1996, I served as Vice President for Chapter Relations and Expansion. In 2002 - 03, I was elected President-Elect.



What are the responsibilities of the National President?

Stemler: In addition to presiding over meetings of the National Council, I represent the Society at various meetings such as the Association of College Honor Societies. I have had the privilege of installing two new chapters and of presenting the Order of the Torch Award. Weekly, I have telephone conversations with the Executive Director and respond to e-mail communication between the national office and members of the National Council.



How does it feel to be the first male National President?

Stemler: I've thought about it a few times. It is significant in some ways and not in others. If you stick around long enough, your chance to serve will come. Alpha Lambda Delta is a great organization with a long and prestigious history and tradition. I am proud to be affiliated with the Society and hope that I can make a contribution to the future of the organization.



NEW NATIONAL COUNCIL MEMBERS

DR. KATHERINE BEARDSLEY
Member-at-Large
University of Maryland



Dr. Kathy Beardsley, of the University of Maryland, has been elected to serve a three-year term on the ALD National Council. Dr. Beardsley has served as advisor to

the Maryland chapter since 1989. Over the years, she has turned her chapter into one of the most successful ALD chapters in the nation. Her dedication and commitment will also carry over to benefit the operations of the National Council.

Dr. Beardsley received her undergraduate degree from the University of Oregon and her masters and doctorate degrees from the University of Minnesota. She has served as the Assistant Dean for the College of Behavioral and Social Sciences for the past seventeen years, where she is responsible for overseeing the undergraduate programs and advising students.

Dr. Beardsley's husband is Robert, who is also a professor and Associate Dean of the School of Pharmacy at the University of Maryland's Baltimore campus.

DR. HARRY HALE, JR.
Member-at-Large
University of Louisiana, Monroe



Dr. Harry Hale, Jr., of the University of Louisiana - Monroe, has been elected to a three-year term as a National Council Member-at-Large. Dr. Hale is a native of California; however, he received his

Ph.D. in Sociology from the University of Tennessee. He has spent most of his career in the southern region of the country. Over the years, he has taught at universities in California, Tennessee, and Kentucky, but has made Louisiana his home.

An ALD chapter advisor since 1989, Dr. Hale has been an active participant at the annual National Leadership Workshop and always accompanies students from his chapter. Due to his outstanding efforts and dedication to the society, Dr. Hale was selected as a winner of the Executive Director Advisor Award for 1999-2000.

During his 27 years in Monroe, Dr. Hale's first priority has remained his students, their education, and development. He has written journal articles and published four books. Dr. Hale has also served as Faculty Advisor of Mortar Board Senior Honor Society since 1995.

KIM M. REAVES
Student Member-at-Large
Auburn University



Kim Reaves, a pre-med major at Auburn University, is the newest Student Member-at-Large on the Alpha Lambda Delta National Council. Kim served as Chapter President

for the Auburn chapter in 2002-03 and led the chapter to win the Order of the Torch Award.

After serving as drum major of her high school band, Kim has continued her musical hobby by playing trombone in the Auburn University Marching Band.

Kim has enhanced her pre-med curriculum by volunteering at Mercy Medical, a free clinic for underprivileged families. Kim is a member of Medical D, a volunteer at East Alabama Medical Center, a member of the Pre-medical Society for Women, and a mentor for a Freshman Pre-health Student.

Kim Reaves first introduced herself to the ALD National Council when she attended the 2002 National Leadership Workshop in Indianapolis. Kim is a serious, caring, very intelligent, responsible person who is making a strong contribution to the National Council of Alpha Lambda Delta.

CALL FOR COUNCIL NOMINATIONS & APPLICATIONS

The National Council Nominations Committee is now accepting applications and/or nominations from current chapter advisors for a Council Member-at-Large position for a three-year term. We invite you to apply or nominate another chapter advisor who would make an additional contribution to Alpha Lambda Delta by serving on its governing board. National Council members must be able to attend the annual June Council meeting. All expenses are paid for travel related to Alpha Lambda Delta.

If you are interested in applying, please submit a vita and a statement of your involvement with Alpha Lambda Delta to the National Headquarters on or before May 15, 2004. For more information, please visit our Web site at www.mercer.edu/ald.

In Appreciation of Dr. Patricia A. Graham

At the 2003 National Council meeting, President-Elect, James Stemler, read the following resolution in honor of Patricia A. Graham:

Whereas, Dr. Patricia A. Graham has served Alpha Lambda Delta ably and well as President, Vice President for Chapter Relations and Expansion, Council Member-at-Large, and Chapter Advisor since 1981. Her insight on trends in higher education, welfare of chapters, and her careful thought and sound advice on the care and feeding of chapter advisors have provided wise counsel and direction for the National Council of Alpha Lambda Delta.

Whereas, Pat has always been mindful of the mission of Alpha Lambda Delta, the importance of the constitution, and faithful to the Society's heritage, she has always provided direction to the deliberations of the National Council, and

Whereas, Pat's cheerful smile and sparkle has uplifted and inspired every council member and chapter advisor, and

Whereas, Pat has shown commitment and absolute devotion to the Alpha Lambda Delta chapter and its members at the University of Texas - San Antonio, and

Whereas, Pat has represented well Alpha Lambda Delta on many occasions, including presenting Order of the Torch awards, installing new chapters, as well as, participation in many professional organizations in higher education, and

Whereas, Pat's friendship, sincerity, integrity, sense of humor, and devotion have facilitated the work of the National Council and strengthened the Society for the hundreds of thousands of members. All National Council members have benefited from her love of excellent cuisine and her continual research on the topic. She is a worthy recipient of the ALD "Bon Appetit" Award.

So, be it resolved, the National Council of Alpha Lambda Delta hereby expresses its profound and deepest gratitude and respect to Pat for her years of service. We will all miss you, but sincerely hope that you will join us for all of our future celebrations.

The National Council gave Dr. Graham the surprise of her life when special Alpha Lambda Delta friends showed up for the Council banquet, including Dorothy Anderson, Margie Wade, and Barbara Quilling. As another surprise, Dr. Graham was presented with a scrapbook of her service to ALD over the years.



COUNCIL MEMBER

Resolutions

MARVA WATLINGTON

Member-at-Large, Kris Guzman, read the following resolution, written by Susan Huffman, in honor of Marva Watlington:

Whereas, Marva Watlington has served a second term for the past three years as a Council Member-at-Large, the National Council wishes to extend its appreciation to her.

Whereas, Marva served on and chaired numerous committees, including Nominations and By-laws, Expansion, Administration, Finance, and Fellowships, and has been instrumental to their success, and

Whereas, Marva's quiet, unassuming, and gracious personality has made her a pleasant colleague, and

Whereas, Marva's warmth, sensitivity, and gentle sense of humor has made her a special roommate, friend, and fellow council member, and

Whereas, Marva has been a dedicated advisor to the chapter at North Carolina A & T State University for over 20 years,

Therefore, be it resolved that the National Council expresses its deep gratitude to Marva for her continuing loyalty, devotion, and longstanding service to Alpha Lambda Delta. We look forward to continuing our connection with Marva through her expansion efforts and local advisor work.

JONATHAN HOVDA

Student Member-at-Large, Angela Congrove, read the following resolution in honor of Jonathan Hovda:

Whereas, Jonathan Hovda has faithfully served for the past three years on the National Council and has done an exceptional job of representing his peers as a student member-at-large, and

Whereas, Jonathan has served on and chaired numerous committees, including the Order of the Torch, Long Range Planning, Expansion, Finance, Administration, and Trow Selection Committees, and

Whereas, Jonathan has exuded everything that is expected in an Alpha Lambda Delta member, including many ALD activities, as well as a plethora of other

campus activities, which is evident in his selection for a prestigious graduate fellowship, and

Whereas, Jonathan has been a model council member by always remembering to work hard, but managing to play even harder, providing comic relief when needed, or by faithfully seconding the motion or calling the question, and

Whereas, Jonathan has proven to be of tremendous character as he can be depended on to flirt without avail, serve as the official body guard of the female student members-at-large, as well as, serving as a loyal golf buddy to Glenda, and is always thought of as being the hopeless romantic as he buys only the best for his girlfriend on every trip,

Therefore, be it resolved that the National Council wishes to extend its gratitude to Jonathan Hovda for a job well done on the council, as well as, to wish him the very best in medical school and to remind him to continue to keep in touch with his ALD family.



ALD

ALD ADVISOR AWARDS

OUTSTANDING ADVISOR OF THE YEAR



Beverly Kellen proudly accepts her award plaque from ALD National President James Stemler at the 2003 National Leadership Workshop.

The National Council of Alpha Lambda Delta selected Beverly Kellen of the University of Alabama to be the recipient of the Outstanding Advisor Award for 2002-2003.

Assistant Director of the Russell Student Health Center and Administrative Advisor for the University of Alabama ALD chapter since 1992, Beverly Kellen was selected from a number of nominations made by the officers of local chapters.

Beverly Kellen is an outstanding chapter advisor who maintains an open door policy towards students. According to chapter vice president, Lisa Vaughn, "Mrs. Kellen cares so much about being a responsible advisor that she has never missed an officer's meeting or a general meeting."

Beverly Kellen's extraordinary pride in this honor society is evident in everything she does with the chapter. As part of the officer transition process, Mrs. Kellen invites outgoing

and incoming officers to her home for a time of training. She shares the history of the honor society and specifically of the chapter at the University of Alabama.

Her track record of submitting winning Trow applications is PERFECT for four years in a row! For 2000, Julia Echols and Ryan King were Trow winners; in 2001, she helped track down the missing application of Joseph Thompson who won a Trow scholarship; in 2002 Andrew Todd was a Trow scholarship winner; and in 2003 Laura Neergaard won a Trow Scholarship. The students of the Alabama ALD chapter have benefitted from her encouragement and support.

Beverly Kellen will be retiring after this year from her many years of service to the University of Alabama. Thank you, Beverly, for all of your effort and hard work over the years for Alpha Lambda Delta! You are truly worthy to be called the "Outstanding Advisor of the Year!"

EXECUTIVE DIRECTOR ADVISOR AWARDS

Dr. Glenda Earwood announced five winners of the Executive Director Advisor Awards for 2002-2003. This year's winners were Lois Szudy of Otterbein College in Westerville, Ohio; Dr. Marty Knepper of Morningside College in Sioux City, Iowa; Lisa Ruch of Indiana University - Purdue University at Indianapolis; Brian A. Carlisle of UCLA; and Drew Dunham of Albion College in Albion, Michigan. "Selecting only five advisors from among the many

superb Alpha Lambda Delta chapter advisors is a very difficult task, but these five advisors had an exceptional year with their chapters!" said Dr. Earwood.



job advising the chapter; over 75%

Since 1998, **Lois Szudy** has served as an advisor to the Alpha Lambda Delta chapter at Otterbein College. Ms. Szudy has done a remarkable

of the eligible freshmen at Otterbein elected to join the honor society this year. Lois Szudy has conscientiously served as advisor and helped the chapter offer service to the college community. In addition to promoting academic excellence at Otterbein, the chapter was involved in a donut run, breast cancer awareness and new student orientation. Last year the chapter was selected to receive the Order of the Torch Award and this year the chapter received the Maintaining the Flame Award.



For the past thirteen years, the ALD chapter at Morningside College has been advised by **Dr. Marty Knepper**. Her dedication and commitment

to the students at Morningside is one of the strengths of the chapter. Having 21 out of 27 students (77%) join Alpha Lambda Delta confirms the reputation of the honor society for promoting excellence in the academic environment among first year students at Morningside College.

Dr. Knepper has done a remarkable job advising the chapter. In addition to promoting academic excellence at Morningside, the chapter was involved in collecting over 100 stuffed animals for the local Council on Sexual Abuse and Domestic Violence; celebrated the 50th anniversary of Charlotte's Web (a direct influence of Dr. Knepper's); sponsored three ALD members in the local Children's Miracle Network Dance Marathon; and lent a hand on a ceramic mural project for the community at the Sioux City Art Center.



Since 1996, **Lisa Ruch** has done an extraordinary job advising her chapter. Behind every Torch winning chapter, there must be an excel-

lent advisor! This is certainly true of the Alpha Lambda Delta chapter at Indiana University - Purdue

University at Indianapolis. The chapter conducted several projects throughout the year and was selected to receive the Order of the Torch Award. Members of the IUPUI chapter served as tour guides and hosts during last October's national workshop for ALD members. Ms. Ruch has conscientiously served as advisor and helped the chapter offer service to the University community as well as to the larger Indianapolis area. The chapter was involved in Adopt-A-Family for the Holidays, United Way Day of Caring; White River Clean-up; Starbucks Reading Program for kids; Coats for Kids drive; and care baskets for Julian Center for abused women and children. Ms. Ruch also helped the national office by serving as a presenter at the Freshman Year Conference in Atlanta. Her testimony as an advisor was very effective.



This year **Brian A. Carlisle** became the new chapter advisor for the Alpha Lambda Delta chapter at UCLA. Brian has done a remarkable job advising the

chapter. The chapter experienced a 48% increase in membership over the previous year. Of the 948 students eligible for membership, 36% accepted membership in the society. In addition to promoting academic excellence at UCLA, the chapter was involved in playing Bingo with senior citizens, collecting eyeglasses, and a youth conference - just to mention a few of the many activities the

chapter accomplished. The ALD National Council recently selected the UCLA chapter to receive the Order of the Torch Award, which is presented annually to the five most outstanding chapters in the country.



This year, **Drew Dunham** became the chapter advisor to Alpha Lambda Delta at Albion College in Albion, Michigan. Even though he was a new advisor,

Drew knew exactly what to do to work with these bright students. Drew Dunham has done a marvelous job advising the Albion chapter; the chapter had over a 180% increase in membership. Drew Dunham has conscientiously served as advisor and helped the chapter offer service to the Albion College community.

The role of the chapter advisor is critical to the success of the chapter and the national organization," said Dr. Susan Huffman, Vice President for Chapter Relations and Expansion. "That's why the Chapter Relations Committee recommended the establishment of the Executive Director Advisor Award in 1998 so that more chapter advisors could be recognized for their service and commitment to Alpha Lambda Delta."

These advisors have done exceptional jobs and deserve the recognition of this award. "The National Council is very proud and grateful to these advisors for the outstanding work they do with these chapters," said Dr. James G. Stemler, National President.

Want to nominate your chapter advisor for the
2004 Outstanding Advisor of the Year?
Go to **www.mercer.edu/ald** for more information
and to obtain a nomination form.

2003-2004 GRADUATE FELLOWSHIP RECIPIENTS

In 2003, Alpha Lambda Delta Honor Society for First Year Students awarded a total of twenty-three fellowships - fifteen \$3000 fellowships, seven \$5000 fellowships and the Maria Leonard Fellowship in the amount of \$7500.

These scholarships are awarded annually for one year of graduate study. Any initiated member of Alpha Lambda Delta who has maintained the academic qualifications for membership is eligible to apply for fellowship consideration as a graduating senior or later.

For more information and to obtain an application, please visit www.mercer.edu/ald.



Joyce T. Hsu
Maria Leonard \$7500 Graduate Fellowship Award Recipient

Undergraduate:
University of Alabama, Birmingham

Graduate:
Vanderbilt University School of Medicine



Erick Alley
Mary Jane Stevenson Fellowship

Undergraduate:
University of South Carolina

Graduate:
University of South Carolina



Anita Bakshi
Dorothy Anderson Fellowship

Undergraduate:
George Mason University

Graduate:
Medical College of Virginia



Christin Collier
Warner Moore, Jr. Fellowship

Undergraduate:
University of Alabama

Graduate:
University of Alabama Medical School



Brian DiPaolo
Betty Jo Hudson Fellowship

Undergraduate:
The Ohio State University

Graduate:
University of Pennsylvania



Nadia Goodwin
Helen Clarke Fellowship

Undergraduate:
Morgan State University

Graduate:
Columbia University



Courtney Gregoire
Miriam Sheldon Fellowship

Undergraduate:
Willamette University

Graduate:
Harvard Law School



Maria Hopkins
Martha G. Wade Fellowship

Undergraduate:
University of Alabama, Birmingham

Graduate:
University of Alabama

Graduate Fellowships



Jonathan Hovda
Maude Lee Etheredge Fellowship

Undergraduate:
University of North Dakota

Graduate:
University of Minnesota Medical School



Brian J. Malloy
Gladys C. Bell Fellowship

Undergraduate:
University of Oregon

Graduate:
University of California, Hastings College of Law



Nadejda Marinova
May A. Brunson Fellowship

Undergraduate:
Georgia College & State University

Graduate:
University of Southern California



Theresa Milbrodt
Kathryn S. Phillips Fellowship

Undergraduate:
Bowling Green State University

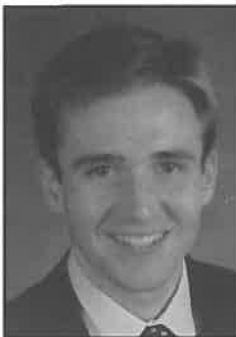
Graduate:
Bowling Green State University



Katherina Nikzad
Barbara Quilling Fellowship

Undergraduate:
Otterbein College

Graduate:
University of Kentucky



Jay Daniel O'Brien
Adele Hagner Stamp Fellowship

Undergraduate:
Bucknell University

Graduate:
Harvard Business



Wendy Pickett
Alice C. Lloyd Fellowship

Undergraduate:
Southern Methodist University

Graduate:
Boston University



Kevin Porteus
Gladys P. Houser Fellowship

Undergraduate:
Ashland University

Graduate:
University of Dallas



Robin Preussel
M. Louise McBee Fellowship

Undergraduate:
University of Alabama

Graduate:
Yale Law School



Yuliya Ratner
Graduate Fellowship

Undergraduate:
Northwestern University

Graduate:
Northwestern University



Stephanie Spier
Christine Y. Conaway Fellowship

Undergraduate:
Ohio Northern University

Graduate:
College of William & Mary School of Law



Alexis Stoddard
Graduate Fellowship

Undergraduate:
Midwestern State University

Graduate:
University of Illinois



Joshua Sullivan
Margaret Cuninggim Fellowship

Undergraduate:
Austin Peay State University

Graduate:
University of Tennessee, Memphis



Bobby Thomas
Margaret Berry Fellowship

Undergraduate:
Midwestern State University

Graduate:
Texas Tech University

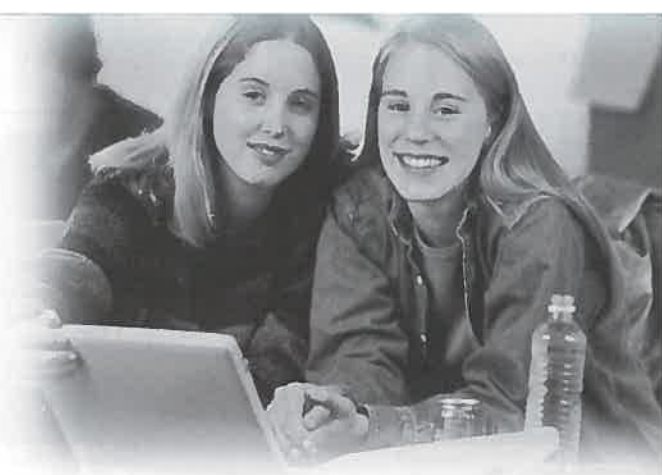


Jennifer Wilbeck
Katherine C. Cater Fellowship

Undergraduate:
Auburn University

Graduate:
University of Alabama School of Optometry

2003-2004 TROW UNDERGRADUATE SCHOLARS



Congratulations to the 2003-2004 Jo Anne Trow Undergraduate Scholars! This year, the National Council awarded 35 Jo Anne J. Trow Undergraduate Scholarships of \$1000 each!

The Jo Anne J. Trow Award was established in 1988 to honor a past President of Alpha Lambda Delta. Former Vice President for Student Services at Oregon State University, Dr. Jo Anne Trow served Alpha Lambda Delta as District VIII Advisor from 1974 to 1979, Secretary from 1979 to 1983, President-Elect from 1984 to 1985, and as National President from 1985 to 1988.

Applications for this undergraduate scholarship will be available from your chapter advisor in January 2004, with a deadline of May 1, 2004.



Marnie Abrams
*Western New
England College*



Angela Bagwell
*Texas Lutheran
University*



Nicole R. Barbour
*The Ohio State
University*



Sarah Bedison
*Otterbein
College*



Lisa Marie Cannon
*Georgetown
College*



John Cookson, Jr.
*Montana State
University, Bozeman*



**Anthony R. Fehr
Jr.**
*University of
Nebraska, Lincoln*



Matthew Fuerch
*University of
Delaware*



Christopher Fulkerson
*Purdue
University*



Julie Greenlees
*University of New
Haven*



Lindsey Groves
*Murray State
University*



Emily Jane Gurry
*Purdue
University*

Trow Scholarships



Leah Susan Hall
*Georgia Southwestern
State University*



Karin Jacobson
*South Dakota State
University*



Sarah E. James
*University of
Louisiana, Lafayette*



Orjola Joldashi
*University of Central
Oklahoma*



Robert J. Long
*Dickinson
College*



Gary Greer Love, Jr.
*Indiana
University*



Elisabeth A. Martin
*Ashland
University*



Laura Neergaard
*University of
Alabama*



Lynnett Newman
*University of
Houston*



Amanda L. Norby
*Morningside
College*



Christine Osowski
*American
University*



Katherine Reichling
*University of
Wisconsin, Platteville*



Michelle A. Santilli
*University of
Georgia*



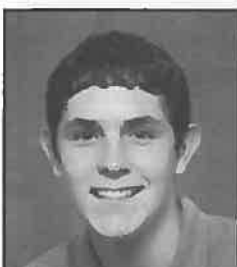
Karen Schmuhl
*University of
Oklahoma*



Thomas R. Shepherd
*Lindenwood
University*



Elizabeth Jane Smart
*Salem
College*



Eric Paul Snyder
*Piedmont
College*



Kayla Renay Stover
*Ohio Northern
University*

Not Pictured:

Doug Chinery
University of South Carolina
Sravanya Gavini
*University of Alabama,
Birmingham*
Tara Hagan
University of Oklahoma
Jennifer L. Hamler
Ohio University
Stephen Sanches
Louisiana State University

**For more
information about
the ALD Trow
Undergraduate
Scholarships,
please visit
www.mercer.edu/ald.**

Alpha Lambda Delta Chapters

2003 ALD CHAPTER LIST

ALABAMA:

1. Alabama, Univ. of - Tuscaloosa
2. Alabama, Univ. of-Birmingham
3. Alabama, Univ. of-Huntsville
4. Auburn University
5. Birmingham-Southern College
6. Montevallo, Univ. of
7. North Alabama, Univ. of
8. Samford University
9. Troy State University

ARIZONA:

10. Arizona State University
11. Northern Arizona Univ.

ARKANSAS:

12. Arkansas State University
13. Arkansas, Univ. of - Fort Smith

CALIFORNIA:

14. Calif. St. Polytechnic University
15. Calif. St. Univ.-Long Beach
16. Calif., Univ. of-Los Angeles
17. Calif., Univ. of-Riverside
18. Calif., Univ. of-Santa Barbara
19. La Verne, University of
20. Pacific, Univ. of the
21. Southern Calif., Univ. of

COLORADO:

22. Colorado Coll.
23. Colorado State Univ.
24. Denver, University of
25. Southern Colorado, Univ. of

CONNECTICUT:

26. Central Connecticut St. Univ.
27. Connecticut, U. of
28. Hartford, U. of
29. New Haven, Univ. of
30. U.S. Coast Guard Academy

DELAWARE:

31. Delaware, Univ. of

DISTRICT OF COLUMBIA:

32. American University

FLORIDA:

33. Florida, Univ. of
34. Miami, Univ. of
35. Northwood University
36. South University
37. Warner Southern Univ.

GEORGIA:

38. Brenau University
39. Ga. Bapt. Col. of Nursing
40. Georgia College & State U.
41. Ga. Southwestern State Univ.
42. Georgia State Univ.
43. Georgia, Univ. of
44. Piedmont College
45. Spelman College
46. Valdosta State University
47. Wesleyan College
48. West Georgia, State Univ. of

IDAHO:

49. Idaho, University of

ILLINOIS:

50. DePaul University
51. Illinois State University
52. Illinois Wesleyan U.
53. Illinois, University of
54. Judson College
55. MacMurray College
56. Millikin University
57. Monmouth College
58. Northwestern Univ.
59. Southern Illinois Univ.

INDIANA:

60. Anderson University
61. Ball State University
62. Butler University
63. DePauw University
64. Franklin College
65. Hanover College
66. Indiana State Univ.
67. Indiana University
68. Ind. U.-Purdue U.-Indianapolis
69. Purdue University
70. Rose-Hulman Inst. of Tech
71. St. Joseph's College
72. Valparaiso University

IOWA:

73. Coe College
74. Drake University
75. Iowa State University
76. Morningside College
77. Simpson College

KANSAS:

78. Fort Hays State University

KENTUCKY:

79. Cumberland College
80. Georgetown College
81. Kentucky, Univ. of
82. Murray State University

LOUISIANA:

83. Grambling State University
84. Louisiana College
85. Louisiana State Univ.
86. McNeese State Univ.
87. Newcomb Coll.
88. Nicholls State Univ.
89. Northeast Louisiana Univ.
90. Northwestern State U.
91. Southwestern La., U. of

MAINE:

92. Maine, University of

MARYLAND:

93. Maryland, Univ. of
94. McDaniel College
95. Morgan State Univ.

MASSACHUSETTS:

96. Fitchburg State College
97. Framingham State College
98. Mass. Col. of Liberal Arts
99. Massachusetts, Univ. of
100. Massachusetts, Univ. of Boston
101. Massachusetts, Univ. of Lowell
102. Regis College
103. Salem State College
104. Western New England Coll.

MICHIGAN:

105. Albion College
106. Kalamazoo College
107. Western Michigan U.

MINNESOTA:

108. Minnesota State Univ., Mankato
109. Minnesota State Univ., Moorhead
110. Minnesota, Univ. of - Crookston
111. Winona State University

MISSISSIPPI:

112. Jackson State University
113. Mississippi College
114. Mississippi State Univ.
115. Mississippi, U. of
116. Southern Miss., U. of
117. Tougaloo College

MISSOURI:

118. Central Methodist Coll.
119. Columbia College

120. Lindenwood College

121. Missouri, Univ. of - Kansas City
122. Maryville Univ. of St. Louis
123. Stephens College
124. William Jewell College

MONTANA:

125. Montana St U - Bozeman
126. Montana, U. of (Missoula)

NEBRASKA:

127. Doane College
128. Midland Lutheran Coll.
129. Nebraska, U. of-Lincoln
130. Nebraska, U. of-Omaha
131. Wayne State College

NEW JERSEY:

132. Ramapo College
133. Rider University

NEW MEXICO:

134. Eastern New Mexico Univ.

NEW YORK:

135. Alfred University
136. Long Island University

NORTH CAROLINA:

137. Bennett College
138. Johnson C. Smith University
139. Lenoir-Rhyne College
140. Meredith College
141. N. Carolina A & T State U.
142. N. Carolina, U. of - Greensboro
143. Salem College
144. Western Carolina Univ.

NORTH DAKOTA:

145. North Dakota, U. of

OHIO:

146. Ashland University
147. Bowling Green St. U.
148. Cincinnati, U. of
149. Cleveland State University
150. Heidelberg College
151. Kent State Univ.
152. Marietta College
153. Miami University
154. Mount Union College
155. Ohio Northern Univ.
156. Ohio State Univ.
157. Ohio University
158. Otterbein College
159. Rio Grande University of
160. Toledo, University of
161. Wittenberg Univ.
162. Wright State University
163. Youngstown State University

OKLAHOMA:

164. Central Oklahoma, Univ. of
165. Oklahoma, Univ. of
166. Okla., U. of Science & Arts of
167. Oral Roberts Univ.
168. Southern Nazarene Univ.

OREGON:

169. Linfield College
170. Oregon State Univ.
171. Oregon, Univ. of
172. Portland, Univ. of
173. Willamette University

PENNSYLVANIA:

174. Bucknell University
175. Chestnut Hill Coll.
176. Dickinson College
177. Elizabethtown College
178. Gettysburg College
179. Penn St. U.-Altoona
180. Philadelphia Clg of Arts & Sci

181. Pittsburgh, Univ. of-Bradford

182. Saint Vincent College
183. Seton Hill College
184. Susquehanna Univ.
185. Temple University

SOUTH CAROLINA:

186. Clemson University
187. Columbia College
188. Converse College
189. S. Carolina, Univ. of
190. Winthrop University

SOUTH DAKOTA:

191. South Dakota State Univ.
192. South Dakota, Univ. of

TENNESSEE:

193. Austin Peay State Univ.
194. Carson-Newman Coll.
195. Cumberland Univ.
196. E. Tenn. State Univ.
197. Maryville College
198. Memphis, Univ. of
199. Tennessee Tech. Univ.
200. Tenn., U. of-Chattanooga
201. Vanderbilt Univ.

TEXAS:

202. Angelo State Univ.
203. Baylor University
204. Houston, Univ. of
205. Incarnate Word, U. of the
206. Lamar University
207. McMurry University
208. Midwestern State Univ.
209. North Texas, Univ. of
210. Sam Houston State U.
211. Schreiner University
212. Southern Methodist Univ.
213. Southwest Texas State U.
214. Texas A & M - Commerce
215. Texas A&M Univ. -Kingsville
216. Texas Christian Univ.
217. Texas Lutheran Univ.
218. Texas Tech Univ.
219. Texas Wesleyan Univ.
220. Texas, U. of - Austin
221. Texas, U. of-El Paso
222. Texas, U. of - Pan American
223. Texas, U. of-San Antonio
224. Trinity University

UTAH:

225. Utah State University

VIRGINIA:

226. George Mason Univ.
227. Liberty Univ.
228. Longwood College
229. Mary Baldwin College
230. Radford University
231. Roanoke College
232. Shenandoah University
233. Sweet Briar College
234. College of William & Mary

WASHINGTON:

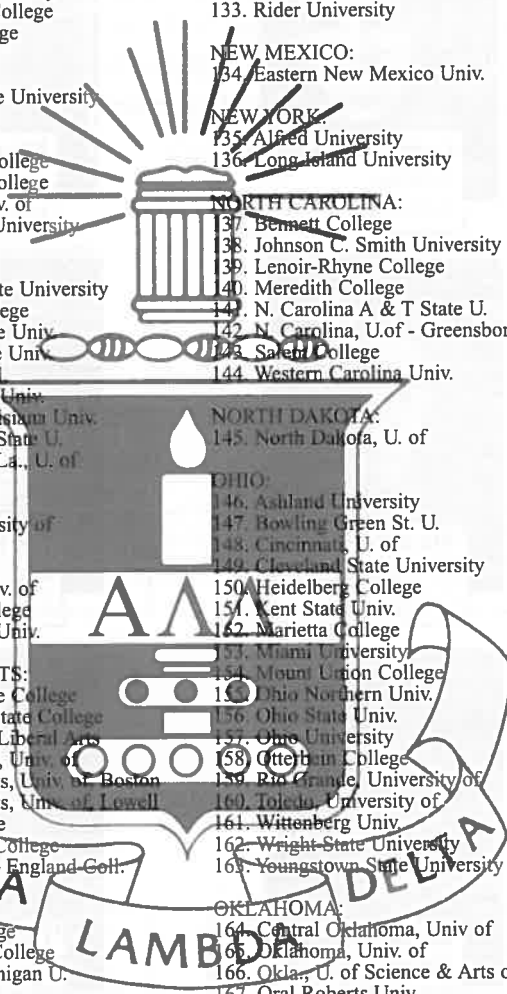
235. Central Washington University

WEST VIRGINIA:

236. Charleston, Univ. of
237. West Virginia Univ.
238. W. Virginia Wesleyan C.

WISCONSIN:

239. Carthage College
240. Wis., U. of-Eau Claire
241. Wis., U. of-Platteville



ALPHA LAMBDA DELTA



CHAPTER ACTIVITIES

Chapters from Across the Nation Share Their Excitement for Alpha Lambda Delta!

UNIVERSITY OF ALABAMA

Tuscaloosa, Alabama
ALD Chapter Since 1930

This year the University of Alabama's Alpha Lambda Delta chapter continued its excellence in leadership through events on campus and in the community. The year got off to a great start when the new officers met at our sponsor Beverly Kellen's house to coordinate events for the year. Beverly Kellen, who was voted Outstanding Advisor of the Year by the National Council of Alpha Lambda Delta, quickly had us involved with events around campus and throughout the community. In the local Tuscaloosa area, we held our annual Halloween party at the Boys and Girls Club, where our members dressed up in costumes, lead fun games for the children, and gave out candy. We also had an exceptional time skating around with the Big Brothers Big Sisters club at our annual skating party.

As always, we contributed on cam-

pus to the "Beat Auburn Beat Hunger" food drive by collecting canned goods around campus and during our meetings. We also moved throughout campus before finals week passing out candy and stickers to our peers dedicated to studying. Our Alpha Lambda Delta chapter, which inducted over 275 members this past year, was voted the most outstanding student organization on campus. We look forward to leading all chapters in excellence throughout the upcoming years.

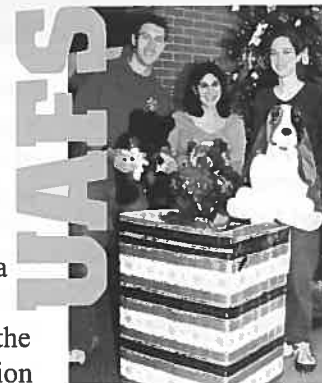
UNIVERSITY OF ARKANSAS - FORT SMITH

Fort Smith, Arkansas
ALD Chapter since 2003

Students at the University of Arkansas - Fort Smith are collecting gifts through Dec. 5 for distribution to area nursing home residents.

Items collected will be turned over to Project Compassion for their annual Hearts of Gold Christmas gift collection. The gift drive on campus is

headed up by students in Alpha Lambda Delta



Alpha Lambda Delta members at UA - Fort Smith

honor society and freshmen in College Seminar classes.

Collection boxes are

located in the Smith-Pendergraft Campus Center, with one near the fireplace and another in the Alpha Lambda Delta office.

Zanette Douglas, director/coordinator for College Seminar and an Alpha Lambda Delta advisor with Ron Orick, said students should find it easy to select something to share in the gift drive because of the variety of items that could be given.

"There are so many possibilities," Douglas said. "Gift suggestions include afghans, lap throws, small stuffed animals, socks, pajamas, gowns, sweatshirts and sweat pants, lotion, combs or brushes, cologne, knitted caps, knitted gloves, boxes of tissue and jig saw puzzles. It's easy to select a gift when you're out shopping. Then you just drop it by - unwrapped - and place it in one of the collection boxes. All students, staff, faculty and community members are welcome to participate."

This is the 12th annual Hearts of Gold drive conducted through Project Compassion Inc. This year's goal is to collect 3,800 gifts for distribution to



University of Alabama ALD members hosted a Halloween party at the Boys and Girls Club in Tuscaloosa.



Auburn ALD members take time to get to know one another at chapter meetings and socials.

AU



ning new activities for Spring, and hope to be able to "Maintain the Flame!"

~Jennifer Jones

AUSTIN PEAY STATE UNIVERSITY

Clarksville, Tennessee
ALD Chapter since 1980

nursing home residents in the Fort Smith area. Project Compassion also provides gifts to Meals-on-Wheels recipients in Washington County. Project Compassion's mission is to bring companionship, job and quality of life to nursing home and retirement center residents and to elderly homebound. Project Compassion, a United Way participating agency, serves 28 homes and centers in a 10-county area with more than 500 volunteers.

~Sondra LaMar

our ALD chapter and two helped run the convention. We were very proud of our chapter, as one of five "Order of the Torch" winners nationally. The week before Halloween, members and officers sponsored a Cake Walk during Project Uplift's Halloween Carnival for local children. Many local children were happy to run around the paw-prints to funky Halloween music and get prizes.

Every third month, the chapter spends time at the local Boys and Girls Club to celebrate birthdays with small gifts and cupcakes. This is a very popular event—Auburn's ALD members love to give back to their community! November ended with the annual "Beat Bama" food drive, during which campus organizations donate nonperishable food items to beat hunger, and, to add a little friendly competition, to beat the University of Alabama!

The Holiday Toy and Clothing Drive was also a big success. We are glad to be able to contribute many toys and items of clothing to ensure a Merry Christmas for the children of this community, through the East Alabama Mental Health Family Services. After numerous items were donated on the concourse our chapter shopped for "practical" items like books and jeans, then wrapped everything at an ALD Christmas Party.

We are very excited to start plan-

Austin Peay State University's Alpha Lambda Delta chapter has been busy with a fun-filled year of service. Our members were more than willing to take on many worthwhile projects and dedicate their time, volunteering for numerous activities.

The year began with a pizza party, where members could get acquainted and talk about plans for the year. We discussed several exciting options and made plans to put them into action.

Our first community activity was a Halloween event called "G.H.O.S.T.," which stands for "Great Halloween Options for Safe Trick or Treating." Every year, hundreds of children from the Clarksville community participate in this event, and members of our chapter dressed up in outlandish costumes as they handed out candy to the youngsters who participated.

In November and December, our chapter stayed busy on campus. We participated in the "APSU Can Provide" campaign to raise donations of canned food items for the needy during the holiday season. Also, our chapter decorated the entire University Center lobby with a multicultural holiday theme in an effort to make everyone feel comfortable and in the holiday spirit.

Plans for the spring include speaking to freshmen leadership and honors classes at Austin Peay about the Alpha Lambda Delta chapter and encouraging their involvement next fall. Also, we plan to hand out candy during exam week to reward diligent students when they've been "caught" studying in the library or University Center.

Overall, members of our chapter

AUBURN UNIVERSITY

Auburn, Alabama
ALD Chapter Since 1952

War Eagle! The Auburn University 2003-2004 chapter of Alpha Lambda Delta has gotten off to an exciting start, and we cannot wait to "Maintain the Flame." We began the year with initiation and installed a great group of new officers who were eager to jump right in and get involved. During Spring finals week, we passed out doughnuts and study tips to encourage the students as they studied in the library. "Caught Studying" was a success, as usual, and we are proud to report that the study tips were as much in demand as the free doughnuts.

Fall of 2003 began with a bowling social. It was a fun way for the members to get to know each other as well as those who would serve as their leaders for the coming year. Four officers went to the national convention in Anaheim, California in October. Two learned new ideas for running

have enjoyed getting to know one another and working together on various activities. We are excited about our future activities and know they will be just as successful as the ones so far!

~Mandy White

UCLA

Los Angeles, California
ALD Chapter since 1940

National Council Member-At-Large Kris Guzman presented the UCLA chapter of Alpha Lambda Delta with the Order of the Torch award on October 7, 2003. The chapter was recognized for its outstanding dedication to UCLA and the Los Angeles community. They were commended on an exceptional scrapbook that detailed the numerous academic, community service, and social events the chapter planned throughout the 2002-2003 school year. Among other things, the UCLA chapter volunteered at a local soup kitchen, convalescent hospital, and the LA Festival of Books this past year. However, their biggest event was the Youth Conference.

They brought in 90 inner-city high school juniors to the UCLA campus so they could "experience" college. The chapter arranged for professors to give mock lectures, took the students on a campus tour, and held a student panel where the high school students could ask any questions they had about UCLA and college in general.

Along with receiving the Order of the Torch, the UCLA chapter also was awarded the Gold Award for increasing its inductees by 94%. In addition, the chapter's first-year advisor, Brian Carlisle, was acknowledged with an Executive Director's Advisor of the Year award. Pictured behind the banner is Dr. Robert Naples, Assistant Vice Chancellor for Student and Campus Life and Dean of Students at UCLA. Dr. Naples spoke at the Order of the Torch presentation, commending the UCLA chapter members on their dedication to promoting acad



emic excellence and their devotion to helping out the community.

~Chris Loesch

UNIVERSITY OF CENTRAL OKLAHOMA

Edmond, Oklahoma
ALD Chapter since 1973



The University of Central Oklahoma wants to express our thanks to the ladies and gentlemen in charge of Alpha Lambda Delta and the wonderful chapters around our nation. This year's biggest goals were for our members to not only excel in the classroom, but outside as well through community service, leadership opportunities, and integrity.

Activities for this year included some traditions, such as putt-putt golf, "You're Caught Studying," and the President's Christmas Party for underprivileged children. New ideas this year included a school supplies project, Pumpkin Carving, and our 30th Anniversary Party. This party welcomed faculty and staff, past and present ALD members, and the entire

The ALD Chapter at the University of Delaware held their second annual Battle of the Bands to raise money for a great cause!

campus in order to celebrate the strides made by Alpha Lambda Delta.

"This year's chapter continues an eagerness to serve in what we hope will continue for thirty more years!" states President Tambra Nowell.

Having the chance to meet all of these incredible students and forming special bonds of friendship has made this year amazing for all of us.

~Danielle Antal

UNIVERSITY OF DELAWARE

Newark, Delaware
ALD Chapter since 1994

The University of Delaware chapter of Alpha Lambda Delta held its Second Annual Battle for Life this past April. The concert, sponsored by the newly-formed Battle for Life Committee, was held to increase awareness of the imbalance in global standards of living and to support efforts to alleviate suffering worldwide.

The show kicked off with a "Battle of the Bands" featuring four local bands, and closed with a performance by national recording artists Ike. Throughout the night, concert-goers were informed of the issues on hand. Professor Bauer, Associate Professor in the University of Delaware

Department of Political Science and International Relations, spoke about the growing political and social impact of the AIDS epidemic in South Africa. Students who worked with children in South Africa also shared personal stories of their experiences, and numerous informational pamphlets prepared by the committee were distributed.

Over 350 people attended the event, and the concert raised over \$5000. Following its previous decisions and commitments, the group sent the money to two organizations in South Africa. The Tumelong Haven is an educational orphanage for children whose lives have been affected by AIDS. The PEPPS School offers private education to children in impoverished areas. Additional information on these organizations, as well as the Battle for Life Committee, can be found at http://copland.ude1.edu/stu-org/aId/battle_for_life_home.htm.

~Matthew Fuerch

DICKINSON COLLEGE

*Carlisle, Pennsylvania
ALD Chapter Since 1989*

After inducting 114 new members, the Dickinson College Chapter of Alpha Lambda Delta has begun what promises to be another lively year.

Members of the organization provided their time and talent in the "Sleep-Out for the Homeless" program, which raised awareness about homelessness. They aided in the "Creepy Quads" event to provide a fun, safe Halloween experience for Carlisle children and to raise money for the United Way. The chapter also participated in Dickinson's Spirit Week by selling clothing to raise money for the organization "Nurturing Orphans with AIDS for Humanity (NOAH)," which provides shelters for orphaned children in South Africa with AIDS.

In the coming months, members plan to participate in Project Share, which collects food for underprivi-

leged individuals and in the Stream Walk to help with restoration at a nearby stream by planting trees. Additionally, the chapter hopes to initiate a new service project, "Senior Ball." Members will dress in formal attire and host a dance at a local retirement home. With various service projects complete and with many exciting events planned, the Dickinson College Chapter of ALD hopes that this year will prove to be a success.

~Faith Nussbaum

GEORGIA STATE UNIVERSITY

*Atlanta, Georgia
ALD Chapter since 1955*

F.A.C.E., which stands for Freshman Academic Center of Excellence, is the latest undertaking of the Georgia State University Alpha Lambda Delta chapter. Up and running since fall of 2002, F.A.C.E. is a tutoring program in which members, and other academically inclined students tutor freshmen. It allows for freshmen who are also prospective members to interact with members and get a feel for the organization. Furthermore, the Georgia State chapter's program helps to establish Alpha Lambda Delta's presence among freshmen. The program also provides a very lucrative channel for educating freshmen about A.L.D.'s mission, membership requirements and fun activities and events. Through this program, everyone benefits - freshmen receive help with their classes and tutors gain volunteer experience as well as transferable skills for future careers.

~Cameron Christian



GSU ALD members, Bernice Butler and Kathryn Powers with advisor Jean Shim at the National Leadership Workshop.

GEORGETOWN COLLEGE

*Georgetown, Kentucky
ALD Chapter since 1968*

On Tuesday, November 18th, 2003, Alpha Lambda Delta celebrated its 35th anniversary at Georgetown College located in Georgetown, Kentucky. Both new and old members were invited to take part in this memorable celebration, as well as faculty and staff. Cake and punch were enjoyed over casual conversations about past, present, and future happenings on the campus. Attendees were also able to browse through a scrapbook with pictures of recent Alpha Lambda Delta events, meet with current officers, and just have a relaxing time. A good time was had by all who came. The anniversary was definitely a special occasion, and hopefully one of many more to come in the future.

~April Carman

GEORGE MASON UNIVERSITY

*Fairfax, Virginia
ALD Chapter since 1990*

The George Mason University chapter of Alpha Lambda Delta exceeded all expectations last year, accumulating a record of over 800 hours of community service!

Working in conjunction with Golden Key International Honor

Society, members participated in CrossLink preparing much needed medical supplies destined for distribution in foreign countries. We also collected hundreds of food items during our Holiday Food Drive and amassed approximately \$300 worth of dry and canned dog and cat food for local area animal shelters. Many members have also given of themselves by donating blood in an effort to replenish the nation's severely depleted blood supply.

On April 6, 2003, our annual Induction and Reception ceremony welcomed 82 eager academians and installed 5 extremely dedicated officers. Wasting no time whatsoever, many new members assisted with George Mason University's commencement ceremonies.

And this year is already off to a promising start! Our most recent venture consists of a mentorship program at Greenbriar Elementary

of Fairfax where members will aid youths with their studies.

~Kristin Ware

UNIVERSITY OF ILLINOIS

Urbana-Champaign, Illinois
ALD Chapter since 1924

The University of Illinois at Urbana-Champaign's chapter of Alpha Lambda Delta is looking forward to a very productive and exciting year. Board members have met several times already and have numerous fund raising activities planned for the year. Each month will be focused around one main event. In November, members will have the opportunity to make Thanksgiving cards for sick children in the local hospital. December will consist of two activities; a canned food drive and a campus-wide blood drive.

Free tutoring is offered

to any University of Illinois student who is having difficulty in certain classes. The aim is to get new and old members alike involved more than previous years. Our first general meeting ever for the Urbana-Champaign chapter will be held this November- a huge step towards creating the unity and participation that is key to the success of any organization.

On top of the 640 students initiated last spring, over 200 more will be initiated at our Fall Initiation Banquet on November 20th. Our chapter of ALD awards a scholarship to one of their new initiates. The scholarship requirements include academic excellence, a five hundred word essay and is need based.

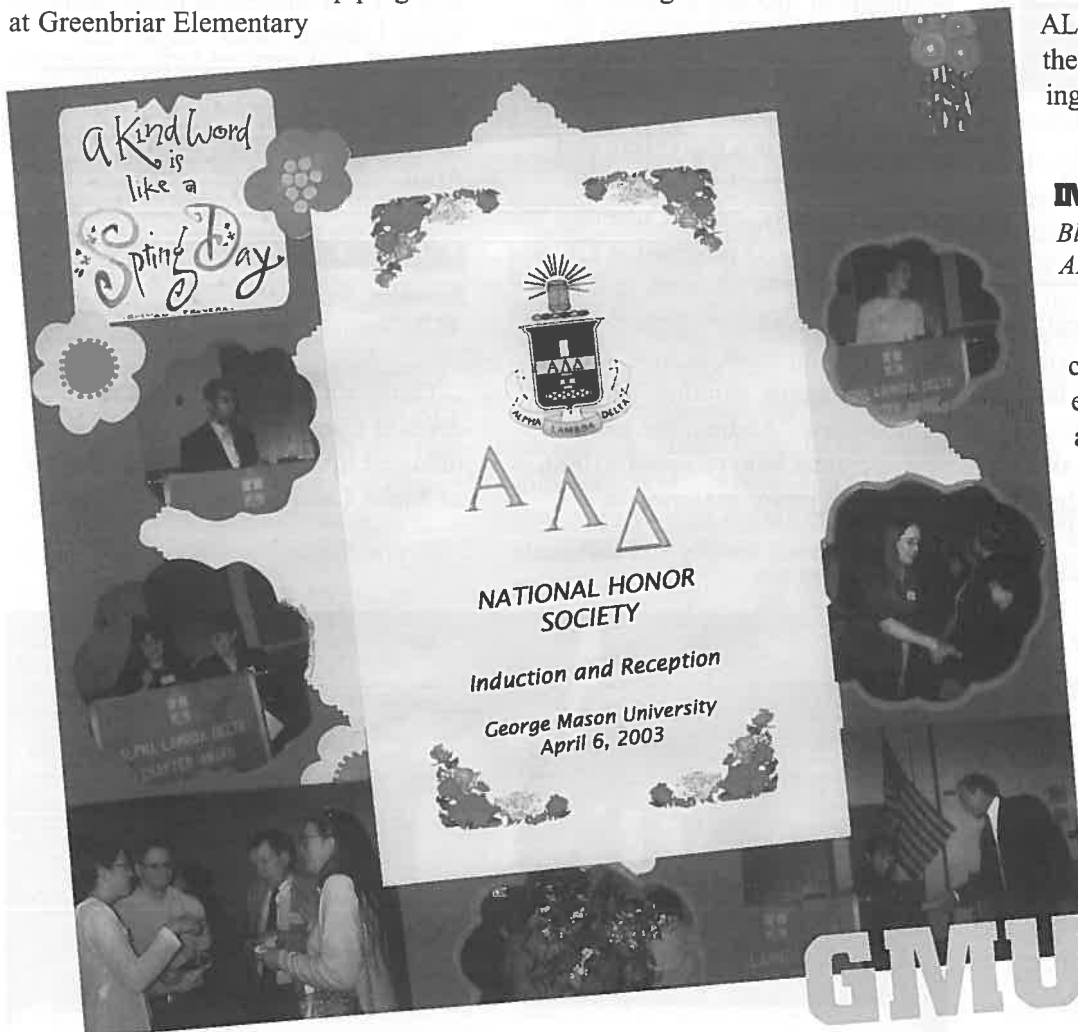
Sydney Braker, president, said she hopes to use this year to set the groundwork for future members and the foundation for a more active organization. Looking into the future, Braker hopes for her chapter of ALD to someday win the Order of the Torch award for their outstanding service.

INDIANA UNIVERSITY

Bloomington, Indiana
ALD Chapter since 1931

The Alpha Lambda Delta chapter at Indiana University is eager to accomplish the many activities and opportunities available for this year! The new executive board began meeting early in the year to plan and promote events. We have continued to participate in activities from earlier years like Adopt-a Greenspace which contributes to the aesthetics of our University by cleaning specific areas on campus. Another activity that ALD is thrilled to be

A page from George Mason University's 2002-2003 scrapbook





Andrea Maurer and Haley Ann Prevatt are recipients of two local scholarships established by the ALD chapter at the University of Kentucky.

event that will occur at the end of the year will be a mass food drive where members of ALD will visit each dorm community and collect food, furniture, and miscellaneous items that students are giving away before they go home. Our chapter hopes to make this the most successful food drive in ALD history.

This year the Indiana University chapter of Alpha Lambda Delta has planned many exciting events and can't wait to get started!

~Sisley Brunon

UNIVERSITY OF KENTUCKY

*Lexington, Kentucky
ALD Chapter since 1940*

The University of Kentucky's chapter of Alpha Lambda Delta would like to give recognition to Haley Ann Prevatt (pictured right) and Andrea Maurer (pictured left). They are the recipients of the two scholarships awarded since UK established its Alpha Lambda Delta scholarship. Haley, the first year recipient who received \$500, is a marketing and management major with plans to graduate in May 2003. Currently, she is in the MBA/JD program at UK and will finish her MBA work in the spring and begin Law School in Fall 2004. Her interests include running, tennis, clogging, painting, and stained-glass. Andrea, the second year recipient who received \$1000, is currently a junior majoring in

Communication Disorders in the college of Health Sciences and minoring in psychology. She hopes to be able to work with children as a speech-language pathologist after she graduates with her master's. Also here at UK she sings in the University Choristers, is president of Delta Gamma, and leads a Bible Study for her sorority sisters.

The current president of UK's chapter of Alpha Lambda Delta is Michelle Bishop. Michelle is a sophomore majoring in Business Management and Finance. At the university she is currently a Business Ambassador, Senator-At-Large, CAUSE Mentor, and a Visitor Center Student Assistant. She is also involved with Preparing Aspiring Wildcats and the Student Development Council, as well as Vice President of Administration for Kappa Alpha Theta.

The University of Kentucky looks forward to a successful future with its Alpha Lambda Delta chapter and plans to continue to give the scholarship through the scholarship office at UK. Applications are usually taken in April.

LONG ISLAND UNIVERSITY

*Brooklyn, New York
ALD Chapter since 1995*

Thirty-six Brooklyn Campus students at Long Island University were inducted into the Alpha Delta chapter of Alpha Lambda Delta on October

involved in is a holiday ornament party where members of ALD will spend time with children at the Boys and Girls Club of Bloomington. As a whole, we have planned an ice skating event that will build unity within the chapter while providing a release from stressful finals week. One focus of the executive board this year is to unite the members of ALD and provide volunteer opportunities for our chapter to make a difference.

One tradition that we will continue will be the "Caught Studying" goodie-bags that are distributed to freshman before finals to encourage the academic excellence ALD looks for in potential members. An additional

New ALD inductees at Long Island University



23, 2003. The new initiates paid tribute to three LIU faculty by inducting them as honorary members. James Clarke, Academic Coordinator of the Honors Program, Teague Mims, Assistant Professor of History, and Patricia Stephens, Director of the Writing Center, were chosen for their dedication to students' intellectual growth. The theme of commitment to intellectual excellence was carried over in the keynote address.

Last year's honorary inductee, Professor Margaret Cuonzo, of the Philosophy Department, delivered a speech about intellectual maturity. She said that the students being inducted had an exceptional potential to achieve intellectual maturity. She said that intellectual maturity, "is a quality of mind involving thinking for oneself and ridding oneself of beliefs that have as their only justification their own popularity." She implored students to work towards this state of maturity not only for their own good, "but because it is for everyone's good."

Newly elected ALD President, Leonid Nudelman, urged new inductees to become active in the chapter and participate in the many planned events for the year. So far this semester, he said, they have organized a fund raiser to help send himself and Vice-president, Candice Sheerer, to Anaheim, CA for the ALD Leadership conference. They are planning a food drive for Thanksgiving and a toy drive for Christmas/Chanuka, as well as "caught you studying" during finals week.

The new ALD members are looking forward to a great year!

~Anna Silver

UNIVERSITY OF LOUISIANA - MONROE

Monroe, Louisiana
ALD Chapter since 1965

"Building our futures with friendships and hard work," is the slogan for the 2003-04 officers and members of

the University of Louisiana at Monroe chapter of Alpha Lambda Delta. The officers worked over the summer to ensure a great year of fun and activities. An officers' meeting was held in July to plan the fall semester events.

Our first service project began the year's list of activities. Members of Alpha Lambda Delta answered phones and took donations for the Jerry Lewis Telethon during Labor Day Weekend. A bake sale with cookies, cakes, and other sweet concoctions cooked by ALD members was held in September. We had loads of fun and sold completely out before our scheduled times were over. Also in September our annual "Smarty Party" was thrown. The Smarty Party is an interest party for incoming freshmen eligible to join Alpha Lambda Delta. It allows interested students to learn about Alpha Lambda Delta and get acquainted with current members.

In October we held our fall initiation of members. We initiated a very enthusiastic group of members who were ready to hit the ground running. The president and communications officer accompanied our faculty advisor, Dr. Harry Hale, to the leadership conference in Anaheim to learn new ways to plan events and get fresh ideas. We had a great time and got to meet some wonderful students from other parts of the country. Our biannual fundraiser with McRae's was on November 22. Members sold tickets to attend McRae's largest sale of the year. All the proceeds from the tickets went directly to Alpha Lambda Delta. We sponsored a food drive throughout the month of November and donated the food to a local food bank.

Our activities slowed down for December to allow more time for university sponsored Christmas activities



Delegates from the University of Louisiana, Monroe with advisor Harry Hale at the 2003 National Leadership Workshop.

and final exams. We had only one activity, Ringing the Bell for the Salvation Army. Members braved the chilly weather in aprons and Santa hats to raise money for the Salvation Army.

Plans for the spring semester include a silent auction and our annual favorite professor week. Members will choose a list of their favorite professors and give them tokens of appreciation throughout the week. The week ends with a reception honoring the favorite professors. Many other activities are in the works to fill up the spring semester.

~Becky Magee

UNIVERSITY OF MARYLAND

College Park, Maryland
ALD Chapter since 1932

The Primannum Honor Society (a combined ALD and PES chapter) at the University of Maryland, College Park, got off to a running start for this academic year back in May, when we installed 600 new members at our annual induction ceremony. A total of one thousand people came to the ceremony, which featured a speech by Tom McMillen, a Maryland alumnus and Rhodes Scholar who also played in the National Basketball Association

and represented Maryland as a member of the U.S. House of Representatives from 1987-1993.

Also last year, Primannum's scholarship committee gave out \$4,000 to College Park Students for both academic achievement and community involvement. Some of that scholarship money went to our three winners of the Alpha Lambda Delta Jo Anne Trow Scholarship Awards.

Our first winner, Amy Smith, maintains an exceptional grade point average while being a member of the university's highly-regarded Gemstone Program. She is working with her Gemstone group to design a supplemental curriculum kit to assist elementary school teachers in integrating multicultural education into standard curricula. Outside of the classroom, Amy is the technical director of the Taal International Dance Club and the art and music editor for Stylus Literary Magazine. She also served as the secretary for Shellshock Productions, the University of Maryland's movie production club.

Our next winner of the Trow Scholarship is Julianne Kortz. Julianne is a finance major in the limited-enrollment business school and a recipient of multiple awards, including an honors citation, dean's list, national dean's list and membership in the National Society of Collegiate Scholars. She is also a mentor in Turtle Camp, which encourages personal development and campus involvement for first year students, as well as the race coordinator and a rower for the University of Maryland's Women's Crew Team.

The third and final winner of the Trow Scholarship is Elaine Goldstein. Elaine, who is a business and marketing major, has worked hard to maintain her unusually high grade point average and has obtained academic honors every semester. She is the research director for Student Entertainment Events, a campus group that plans programs for all students, such as speakers, comedians

and social events. Elaine is also a member of the Fair Trade Coffee Advocacy Club and has acted in several plays on campus.

Our scholarship committee was also impressed with Kathleen Daly's academic achievement and her involvement in the campus community, and we have awarded her an honorable mention for this scholarship. This year, because of raising membership dues and trimming our budget, we hope to give out nearly \$10,000 in scholarship money.

In addition to handing out scholarships, Primannum held many successful events last year, such as participating in a walk for literacy and making Christmas cards for disadvantaged children, and we hope to do the same this year. Our first event of the academic year was in early October, when more than 50 members made sandwiches for Martha's Table, a Washington, D.C., based non-profit organization that provides various services for needy children, families and individuals.

Of course, none of these events would have happened without the leadership and dedication of Primannum's executive board. Elected last spring and led by new President Mike Fleg, the 21 members of the executive board meet at least twice a month and ensure all aspects of the organization run smoothly, from our finances to the induction ceremony to our new and improved website (www.inform.umd.edu/Student/Campus_Activities/StudentOrg/ald/).

MCDANIEL COLLEGE

*Westminster, Maryland
ALD Chapter since 2001*

On October 5, 2003, the McDaniel chapter of Alpha Lambda Delta inducted its third group of new members into the organization. In the ceremony held in McDaniel, formerly Western Maryland College, historic

Little Baker Chapel, 25 new members were welcomed into the organization, making the membership over 80 members in its third year. On hand for the inductions were the group's advisor, Associate Dean Barb Horneff, and the presiding honorary member, Dean Philip Sayre. In addition to the 25 student inductees, McDaniel College President Joan Develin Coley was also welcomed into ALD as an Honorary Member by both former and current ALD presidents, James Lipchock and Kara Kunst, respectively. Dr. Coley, a graduate of Albright College and the University of Maryland, has been at McDaniel for over 25 years, serving as a professor of education, Dean of Graduate Affairs, and the College Provost. In her acceptance of the honorary membership, Dr. Coley told the group of the importance of active education and making one's college experience their own.

Student inductee's included: Cassandra C. Allen, Kristen M. Aversa, Nicole L. Bach, Laura A. Baggaley, Amanda S. Bannigan, Sarah

2003 McDaniel College ALD Inductees



H. Barnes, Anna R. Bowers, Rachel E. Bryant, Matthew F. Copeland, Stephanie A. Dirla, Suzanne R. Gilbert, Jessica R. Heckerman, Kathleen M. Hickey, Rebecca L. Jayne, Jenna M. Layman, Laura C. Pritchard, Marci E. Ryan, Rachel E. Schmidt, Christopher S. Simms, Alice F. Sizemore, Kathryn J. Smith, Amanda L. Strine, Rebecca M. Ward, Megan B. Wheeler, Melissa J. Wisner.

~Elizabeth Musar

MIDWESTERN STATE UNIVERSITY

Wichita Falls, Texas

ALD Chapter since 1974

The members of the Midwestern State University Chapter of Alpha Lambda Delta have been busy with projects, activities, and other efforts that we hope will make a difference on our campus and in our community.

In September, we chose to help Interfaith Ministries collect money for the program, "Pennies for Prescriptions." Members volunteered their time to make signs, place containers all over campus, and collect donations. We were able to donate over \$60 from change collected on campus! We also led the University in the remembrance of September 11, 2001 with the "Ribbons of Remembrance" that we made and distributed to students and faculty.

In addition, our chapter participated in the Wichita Falls "Day of Caring," a citywide effort to replenish the empty shelves of the area food bank. Our donation helped the Midwestern State University Community contribute 2,981 lbs. of food to the cause!

We will be volunteering at one of our area Boys and Girls Club's Fall Fest this Halloween. We hope that our donations of candy, prizes, and time will help the children have a safe and fun-filled Halloween.

This year has brought many opportunities of service and fellowship to



our Alpha Lambda Delta Chapter. Our officers deserve a pat on the back, as well as our faculty advisor, Sue Henson, who is always enthusiastic about what we are doing and instrumental in helping us get it done.

~ Marie Ibarra

NORTH CAROLINA A & T STATE UNIVERSITY

Greensboro, North Carolina

ALD Chapter since 1978

In light of our chapter's 25th Anniversary, we are thrilled to have reached such an important milestone in our organization's history. To celebrate, our members, old and new, joined in fellowship for a celebratory social. Light refreshments were served and a delicious cake was enjoyed by all. We also took time to reflect upon our past accomplishments and future goals.

So far this year we have been fortunate enough to send our officers and/or members to various events including the National ALD Workshop. Our president, Brenda Wise, and our vice-president, Stephen



The ALD chapter at North Carolina A & T State University celebrated its 25th Anniversary in 2003!

Peoples, represented us well at the national leadership workshop in Anaheim, and they proudly delivered the 53 children's books we collected for the national ALD service project. Tying into the spirit of community we share with other colleges in Greensboro, NC, on Monday, October 27, Brenda and Stephen attended the congratulatory Banquet and the formal ceremonies for the installation of a new ALD chapter at Bennett College. They were joined by member James McClelland and our advisor, Mrs. Sandra Williamson, and they all found it to be an uplifting experience.

We have big plans for this year, and we are kicking it off with community service, an essential part of any academic organization. In addition to continuing to support the individual efforts of our members to better our campus and the surrounding community, we are planning to make a major impact on the community as a whole. First we will continue to regularly clean a portion of nearby Dudley/Bennett Street, as we maintain our commitment to the local Adopt-A-Street program. Improving the scenic aspect of an area helps to instill a sense of pride in area residents.

We not only care about the aesthetic improvements that we can make to the

2004 CHAPTER ANNIVERSARIES

5 Years

Eastern New Mexico University
Massachusetts Coll. of Liberal Arts
University of Missouri - Kansas City
Piedmont College
U.S. Coast Guard Academy
Youngstown State University

10 Years

University of Delaware
Winona State University

15 Years

Columbia College (MO)
Doane College
Louisiana College
Marietta College
Maryville University of St. Louis
Meredith College
University of Portland
Univ. of the Sciences in Philadelphia

20 Years

University of New Haven

25 Years

Salem College

30 Years

University of Alabama - Huntsville
Midwestern State University
University of North Alabama
Southwest Texas State University
Texas Lutheran College
Troy State University
West Virginia Wesleyan College

35 Years

State University of West Georgia
Texas A & M University - Kingsville

40 Years

University of Connecticut

45 Years

Fort Hays State University
Morningside College

50 Years

Alfred University

55 Years

Butler University
Illinois Wesleyan University
Lindenwood University
Texas Tech University

65 Years

University of Montevallo
University of Southern California
Vanderbilt University

70 Years

Birmingham Southern College
University of Georgia

75 Years

University of Oklahoma

80 Years

University of Illinois

environment, but we are also concerned with the welfare of the people within our surrounding community. At the present we plan to adopt a family in need in the hopes that we can make their Thanksgiving unforgettable. Many of our members will also participate in the Guilford County School system's lunch-buddy program. This program includes the establishment of a mentor-like relationship with a middle-school (junior high) child through interactions at the lunch table. Perhaps, the influence of ALD members will inspire these children to strive for excellence and exceed their perceived limitations.

As an academic activity and as a service to the University community, we are co-sponsoring (with the campus Library) the showing of the video W.E.B. DuBois: A Biography in Four Voices, on Wednesday, November 5, 2003. This will be one of our contributions to the campus' Text-in-Community program. This year's campus-wide text is Souls of Black Folk by W. E. B. Dubois. Our president, Brenda Wise will provide introductory remarks for the film.

Not only do we feel that community service is important, but we are determined to establish and sustain lasting relationships between old and new members of our chapter. To facilitate this, in mid-November we are looking forward to having a movie night during which members and non-members can take a break from the stress of upcoming finals. The proceeds from concessions provided at the event will be donated to a charity.

These proposed activities are just the tip of the iceberg. Historian Shariva Hope is in the process of gathering the pictures that we have taken and that we will make into a scrapbook. I can't reiterate enough how excited we are about our anniversary. So remember to look out because the "Aggies" are on the move!

~Loretta Mitchell

UNIVERSITY OF OKLAHOMA

Norman, Oklahoma
ALD Chapter since 1929

The University of Oklahoma chapter of Alpha Lambda Delta has grown substantially in the last few years under the direction of Dean Douglas Gaffin, Faculty Advisor, Dr. Alice Lanning, Administrative Advisor, and Dr. Barbara Tophoj, Chapter Assistant. The chapter initiated 600 members in spring 2003, and we have 9 hard-working officers with a newly-appointed webmaster. We are also in process of obtaining the names of faculty members on our campus who are members of Alpha Lambda Delta.

This year the officers have planned to increase total chapter involvement by holding a campus-wide philanthropy project to benefit both United Way and Camp Cavat, a recreational camp in Oklahoma City for children with special needs. In spring 2004 we will also participate in OU's Big Event, the largest student-run philanthropic event in Oklahoma.

Everyone is anticipating a successful 75th anniversary celebration of the chapter's charter here at OU, which will commence after initiation in April. Our goal is to offer several more local chapter scholarships in addition to the two \$500 scholarships we provided sophomore members last April. In addition we have a benefactor who has given a \$500 junior-level scholarship in honor of the 75th anniversary.

We have high hopes for all our local chapter members and for our upcoming Trow applicants, while reminding them that two of the recipients of the national Trow scholarship last year, Tara Hagan and Karen Schmuhl, came from our very own chapter. To all our members, we send best wishes for all your academic and philanthropic endeavors!

~Barbara Tophoj

PURDUE UNIVERSITY

West Lafayette, Indiana
ALD Chapter since 1926

The Alpha Lambda Delta chapter at Purdue University has proved to be one of the most prestigious and rewarding honor societies on our campus. The current officers and members have upheld this reputation and have taken our chapter to new levels of academic excellence and community service. Since the spring of 2003 our society has become larger, which is evident by the silver award we won. We conducted a dignified induction ceremony this past March to initiate 337 new members into our chapter. Following the induction, we provided a banquet in the Union ballroom for current officers, new members, and families. We were pleased to honor Mr. John Sautter, Vice President for Housing and Food, as our speaker and new honorary member. After choosing new officers from the group of initiates, we held an officer transition picnic. We played ice breakers and games, the old officers passed down their binders, and many fun stories and tips were shared.

Since induction in the spring of 2003, we have formed

The Seton Hill College chapter works together to make our world a better place.

many great memories and life-long friendships. More importantly however, we have provided the opportunity for our fellow members to become involved in the community. Our president, vice president, and advisor attended the national ALD workshop in Anaheim this fall and brought back many good ideas to share. We held an officer "goal-setting" retreat and these ideas soon translated into goals, which we then successfully accomplished. We completed a "Trick-Or-Can" food drive for the first time in the fall. All proceeds were donated to a local food bank. We dressed in costume and collected 413 lbs. of canned items, snacks, boxed meals, and various other donations from surrounding neighborhoods. We were also lucky enough to volunteer our time at a Boo at the Zoo event. Members ran games oriented toward small children, painted faces, and dressed in costume to act out scary skits. We recently participated in serving a warm Thanksgiving dinner to the underprivileged adults and families at a Lafayette adult resource organization. Other philanthropies we participate in

company and plant flowers. These philanthropies serve to bring our members together and provide them with the opportunity to touch the community and campus.

We are able to encourage academic achievement here at Purdue and in the community with our Prime-Time Tutoring program, which takes place at the married-student community. Members and officers volunteer their time to help the young elementary children with their daily homework. We also hold an annual Academic Super-Bowl, a competition held between student organizations on campus in which they compete for prizes donated by generous local businesses. All fees benefit the Lafayette Adult Resource Academy to fight illiteracy.

Our chapter also holds a fall initiation each year. This past fall we were able to induct 83 new members. We honored Dr. Zenephia Evans as banquet speaker and our new honorary member. This fall initiation has increased our member involvement and opens up opportunities to those who may have missed out in the spring. We continue to further develop our chapter of Alpha Lambda Delta, and provide students with awards and honors for their collegiate achievements. Our officers and members feel very honored to be involved with such a prestigious society and look forward to upcoming events.

~Dayna Timmer



throughout the year include Salvation Army holiday bell ringing, a Jubilee Toy Drive event, the American Cancer Society Relay for Life, and many nursing home visits to keep the residents

SETON HILL COLLEGE

Greensburg, Pennsylvania
ALD Chapter since 1936

When asked what he would do if he knew he was to die in two days, Martin Luther said, "I would plant a tree." The Seton Hill University chapter of ALD did just that, the planting part that is, not the dying.

Dr. Atherton, the faculty advisor, developed "Project 400." It is predicated on the idea that we each need to plant 400 trees to replace the oxygen

ALD members from the University of South Carolina put the finishing touches on their prize winning spirit banner to be displayed at the football stadium on game day.

we use over a lifetime.

In late May ALD purchased 125 Japanese Larch and 125 White Pine. That same day 18 students planted 250 trees on a plot of land owned by Mr. Robert Ackerman, whom the Pennsylvania Forest Service officially designates a "Forest Steward". Forest Service Official Thomas Fitzgerald supervised the planting, teaching the students how to use a "dibble," how much to water, the optimal planting distance, how to connect the protective tubing around the seedling. The Ackermans provided an amazing lunch, protective tubing for the seedlings, tools, the stakes for holding the tubes, and tales of trees on their property brought from Thoreau's Walden Pond, Tolstoy's farm, and Sherwood Forest.

The planting allowed ALD students to address environmental degradation in a personal, immediate manner. Many had the foresight to say they would visit in ten years when the seedlings become saplings to see the results of their efforts. This was the first experience with Project 400 and so it was limited to a total of 250 seedlings. Though not quite the 400 trees per person, it allowed students to get a feel for the work and see a field of saplings ready to become a forest. It was hard work, but everyone left with a feeling of accomplishment after viewing the small forest that was there because they had planted it. Next year with better advertising we plan on greater participation and more seedlings.

ALD can make a difference in global warming and do it in our own back yard.

~John Michael Atherton



USC

UNIVERSITY OF SOUTH CAROLINA

*Columbia, South Carolina
ALD Chapter since 1962*

It's been a "banner" year for the University of South Carolina chapter of Alpha Lambda Delta! We have been very busy working to promote spirit, service, and scholarship. For home football games this year, we participated in the poster/ banner contest sponsored by the student alumni council. Sometimes we won monetary prizes, but always we got the chance to be creative, work with other members, and have fun! (see picture)

In order to increase awareness of ALD on campus, we took part in USC's student organization fair and got the chance to speak one-on-one with potential ALD members. Throughout the year our chapter worked with the student government association in a program called "Clean Carolina," in which student organizations "adopt" certain areas on campus, and, armed with trash bags and gloves provided by SGA, pick up litter in order to help keep the campus clean and beautiful.

In October, we sent two delegates to the national workshop in Anaheim, CA, where they picked up many great ideas. Also at the workshop, our chapter president, Brittany Sheppe, addressed the group and urged everyone to join our chapter in

continuing to provide financial support to the National Alpha Lambda Delta Perpetual Fellowship fund this year. This fund provided scholarships for two students of the University of South Carolina this year: 2002-2003 chapter president, Doug Chinery, who received the Trow scholarship; and Erick Alley, who won one of the graduate fellowships.

Our chapter has been making efforts to promote academics to our members as well as future college students throughout the state. We invited the director of the campus Office of Fellowships and Scholarship Programs to speak at one of our monthly meetings to inform our members of opportunities and services that are available to them. We also held the 13th annual USC Challenge in December, an academic competition in which high school teams from all over South Carolina compete. We recruit faculty to read questions and our members serve as judges, runners, buzzer system technicians, and scorekeepers.

All in all, it has been a very productive year for ALD at the University of South Carolina. We have been involved in many events that have been successful in enhancing our organization and campus. We are proud of our accomplishments and hope that future years will prove even more fruitful.

~Harrison Greenlaw

UNIVERSITY OF SOUTHERN CALIFORNIA

Los Angeles, California
ALD Chapter since 1939

Many students at the University of Southern California attended the first annual Alpha Lambda Delta ice cream social, which was held on Tuesday, September 23. The event provided ALD members with a nice cool break from the heat and from work. It was held at the scenic Founder's Park on campus from 11 am to 1 pm, allowing students to stroll in at their own leisure and help themselves to an ice cream sundae. It was a great opportunity for the students to meet and relax with fellow honors students. The event was a great success, with hopefully more to come.

~Kristian Guzman



University of Southern California students take a break from the heat and from studying to enjoy an ice cream social provided by the ALD Chapter.



orientation folders, and hanging Alpha Lambda Delta posters in the residence halls and classroom buildings to welcome students back to campus. We also assisted with the College Quiz Bowl Contest for November's "Service and Awareness Month," and prepared door hangers for finals week with a "Shh! I'm studying" message. Our activities also included making Christmas cards to deliver to area nursing homes and making a donation to Badger Camp during the annual Christmas Telethon. Alpha Lambda Delta also had the opportunity to purchase and plant a tree on our campus for Earth Day, which through our university's newspaper, gave our group excellent publicity. Prior to the induction of our new members, we held an informational meeting. After the induction, we mailed news release forms to the new members.

In the Spring of 2003, officers were elected for the upcoming academic year. A pizza party was held at the

home of Advisor Darla Banfi for outgoing and incoming officers to set goals for the 2003-2004 school year.

As a past Order of the Torch chapter, we hope to carry on the tradition of providing another year of worthy activities. Jolene Gibbs, Shelly Bennett, and Darla Banfi attended the national workshop in Anaheim, California. Together they were able to attend a variety of sessions and came back with goals and ideas for our chapter. Our school year will be busy with planning for the annual induction of new members. UWP is thrilled to have our first Trow National Scholarship Winner, Katie Reichling. She will be recognized at our ceremony and banquet. Our plans also include making holiday cards for a nearby nursing home, adopting a family for Christmas, planting a tree on our campus for Earth Day, selecting and recognizing an outstanding professor, updating our chapter's website, and encouraging literacy by reading to younger children at schools and libraries.

UNIVERSITY OF WISCONSIN, PLATTEVILLE

Platteville, Wisconsin
ALD Chapter since 1970

The University of Wisconsin-Platteville held its annual induction ceremony on April 27, 2003, with 94 members inducted. The Senior Book Award was presented to Sarah Shafarik. Dr. Michael Viney, Assistant Chancellor of Student Affairs, was inducted as the 2003 ALD Honorary Member.

Some of the activities involving Alpha Lambda Delta during the 2002-2003 school year included: providing bookmarks and a letter in Freshman



New ALD members at the University of Wisconsin - Platteville

Want your chapter featured in next year's issue of *The Flame* magazine?

Send stories and photos to:

Dr. Mike Nichols
ALD Editor
P.O. Box 4403
Macon, GA 31207

Photos may be black and white or color. Digital photos must be high resolution (300 dpi or better).

Questions? Call 1-800-9ALPHA1 or e-mail ald@mercer.edu



Youngstown, Ohio
ALD Chapter since 1999



The Youngstown State University ALD chapter worked hard to put down the base for a shed with Habitat for Humanity on Saturday, October 25, 2003. The chapter members plan to go back to work on the project in the upcoming months. They also entered a car in the YSU Homecoming parade and passed out candy to the students and children who attended.

~Michael Hoffman

CHAPTER MEMBERSHIP AWARDS

Alpha Lambda Delta finished the year with over 25,000 new members! The following chapters received an award for increases in membership. A letter of achievement was sent from Dr. Glenda Earwood, Executive Director, to the institution president of each of these schools. The chapters are recognized here in *The Flame* and a certificate was presented to those schools in attendance at the 2003 National Leadership Workshop in Anaheim, California.

Gold Award (Increase of 50% or more)

University of Cincinnati
Arkansas State University
Albion College
Central Methodist College
Liberty University
Bowling Green State University
Stephens College
University of Southern California
Angelo State University
University of California - Los Angeles
University of Maine
Colorado College
Minnesota State University - Mankato
Doane College
Anderson University
University of Kentucky
Illinois Wesleyan University
Trinity University
University of Nebraska - Lincoln
Monmouth College
University of Massachusetts - Boston
Ind. Univ.-Purdue University Indianapolis

Silver Award (Increase of 25% or more)

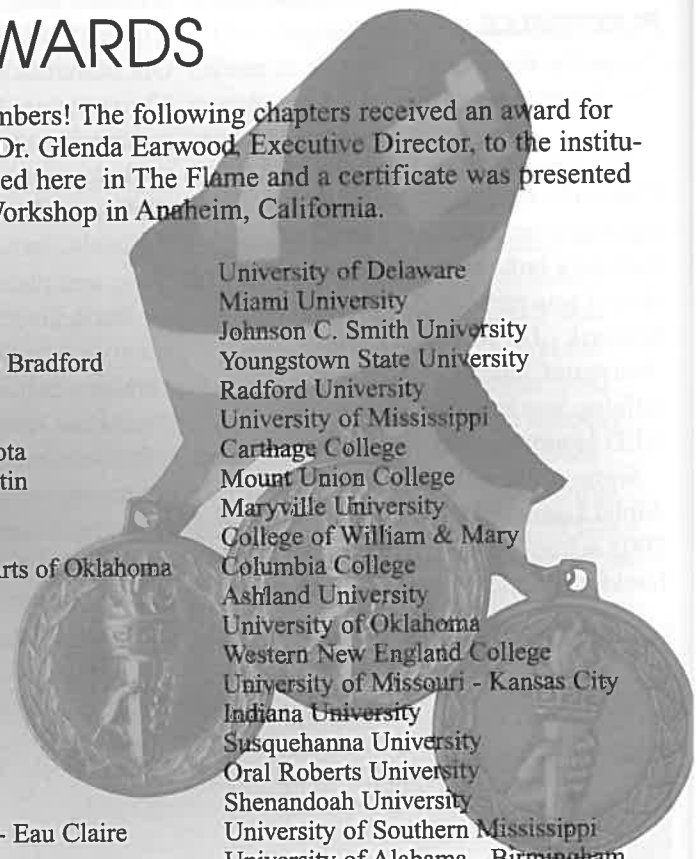
University of Montevallo
University of Miami

Purdue University
Mary Baldwin College
Lenoir-Rhyne College
University of Pittsburgh - Bradford
DePauw University
Ohio University
University of North Dakota
University of Texas - Austin
Alfred University
Tougaloo College
University of Science & Arts of Oklahoma
Seton Hill College
Otterbein College
Murray State University
Gettysburg College
Linfield College
University of Portland
Auburn University
Piedmont College
University of Wisconsin - Eau Claire
Kent State University
St. Joseph's College
University of California - Santa Barbara

Bronze Award (Increase of 10% or more)

William Jewell College
University of Nebraska - Omaha

University of Delaware
Miami University
Johnson C. Smith University
Youngstown State University
Radford University
University of Mississippi
Carthage College
Mount Union College
Maryville University
College of William & Mary
Columbia College
Ashland University
University of Oklahoma
Western New England College
University of Missouri - Kansas City
Indiana University
Susquehanna University
Oral Roberts University
Shenandoah University
University of Southern Mississippi
University of Alabama - Birmingham
Simpson College
Winona State University
Ohio Northern University
South Dakota State University
Samford University



NEW ALD CHAPTERS

Alpha Lambda Delta had an amazing year for expansion!
Welcome the eleven new chapters that joined the ALD family!

UNIVERSITY OF ARKANSAS - FT. SMITH

October 7, 2003

Fort Smith, Arkansas

By Dr. Harry Hale

The installation of the Alpha Lambda Delta chapter at the University of Arkansas - Fort Smith was held on Tuesday evening, October 7, 2003 in the Reynolds Room of Smith - Pendergrast Campus Center on the beautiful campus in Fort Smith, Arkansas. The Installing Officer was Dr. Harry Hale, Jr., member of the National Council of Alpha Lambda Delta. The initiates, family members and friends of the initiates, university faculty and administrators attended the initiation and installation ceremonies.

Mr. Ron Orick, University Business and Employment Liaison and Director of Placement Services, served as Administrative Advisor. Ms. Zanette Douglas, Director of Adult - Returning Students, and Freshmen Programs, served as Faculty Advisor. Both Mr. Orick and Ms. Douglas had served as advisors to the previous freshman honor society, Phi Theta Kappa. Ms. Douglas, along with Mr. Orick, were instrumental in developing the petition for admission to the National Alpha Lambda Delta organization.

Before the ceremony, Dr. Hale met with Ms. Douglas and several of the chapter officers, reviewing the transition from Phi Theta Kappa to Alpha Lambda Delta.



Dr. Harry Hale poses with chapter president Deidra Gomez. (Left) The ALD Chapter office at UAFS.

During the hour prior to the ceremony, Mr. Orick told Dr. Hale of the transition from community college to State University, and of the Alpha Lambda Delta application procedures. Dr. Hale observed and participated in the preparation of the initiation table in advance of the ceremony to follow.

As time for the ceremony drew near, officers located themselves near the entrances of the Reynolds Room to direct the guests to their seats and to hand programs to the guests as they arrived. Then the chapter advisors, installing officer, honorary member and initiates lined up in the open area just outside the entrance and proceeded in, with initiates taking seats in the first two rows in front of the initiation table. After taking the Alpha Lambda Delta Pledge, each person's name was called by Dr. Hale. As their names were called, each initiate signed the chapter roll, received his or her certificate and pin, and shook hands with the advisors, Ms. Douglas and Mr. Orick.

Seventy-three student members and three honorary members were initiated. The honorary members included Dr. Sandi Sanders, Provost and Chief Academic Officer of the university, Ms. Zanette Douglas, Director of Adult - Returning Students, and Freshman Programs and Faculty Advisor, and Mr. Ron Orick, University Business and Employment Liaison, and Director of Placement Services and Administrative Advisor.

Following the initiation of the charter members by Dr. Hale, the chapter officers were installed.

After the installation of the chapter officers, Dr. Hale said what an honor it was to install the new Alpha Lambda Delta chapter on behalf of the National Council, then presented the national charter to President Deidra Gomez. President Gomez accepted the charter on behalf of the chapter and the university and addressed the new members regarding the responsibilities associated with membership in Alpha Lambda Delta, and to the chapter. Dr. Hale addressed the advisors, officers, members, and guests regarding the honors and benefits of membership in Alpha Lambda Delta.

A reception was held following the ceremony where family members and friends, along with the University representatives and Dr. Hale, socialized and extended congratulations to the new members and advisors.

CENTRAL CONNECTICUT STATE UNIVERSITY

April 21, 2003

New Britain, CT

By Dr. Katherine Pedro Beardsley

Central Connecticut State University, located in New Britain, Connecticut, was installed as the 293rd chapter of Alpha Lambda Delta on April 21, 2003 at 6:30 P.M. The installing officer for Alpha Lambda Delta was National Board Member-at-Large, Katherine Pedro Beardsley. Eleven honorary members and 226 students were initiated into the Central Connecticut State University chapter.

The location of the ceremony was Welte Hall, a beautiful historic campus concert hall. The facility was perfect for this ceremony. There is a beautiful wood stage where the Chapter Advisors, Chapter Student Officers, Speakers and Dr. Beardsley sat.

The Events Staff was absolutely superb. At 3:00 P.M. the student officers, the chapter advisors, the Events Staff, and the installing officer met to walk through the set up and the ceremony. The Events Staff made excellent suggestions that helped the actual ceremony go very smoothly.

As the installing officer, Dr. Beardsley met with the three chapter advisors, Dr. Jane Higgins, Dr. Joanne DiPlacido and Dr. Laura Levine, at 2:00 P.M.

Dr. Beardsley met the student officers at 2:30 P.M. when they came over to the Student Center prior to going over to the Welte Hall for working through the logistics and practice. Dr. Beardsley was able to talk with them about what was realistic in keeping 200 members excited about an Honor Society. The Chapter Officers asked a lot of questions.

After the procession of the Chapter Advisors, Chapter Officers, Honorary Initiates and then the student initiates, the Ceremony began with the Initiation of the Members.



Chapter officers and advisors at Central Connecticut State University.

The Honorary Initiates were then inducted followed by the installation of the Chapter Officers. Dr. Beardsley then installed the 293rd chapter of Alpha Lambda Delta and presented the Provost of the University with the Charter. Dr. Beardsley followed with remarks focusing on the benefits of having Alpha Lambda Delta on their campus and the importance of maintaining the academic excellence they had already shown. The Provost then gave an address. After her inspiring talk, Lauren Whitney, Chapter President, made her remarks. She recognized her fellow officers, the Chapter Advisors, the Honorary Initiates.

After the Initiation and Installation Ceremony, a reception in the narthex was provided for the initiates and their guests. Parents and students were very excited about having Alpha Lambda Delta on the campus, as were the Honorary Initiates.

New Chapter at Central Washington University.

CENTRAL WASHINGTON UNIVERSITY

November 3, 2003

Ellensburg, WA

By Dr. James Stemler



The installation of the Alpha Lambda Delta chapter at Central Washington University was held on Monday, November 3, 2003 at 7:00 p.m. in the Cesar Chavez Theatre in the Samuelson Union Building on the Central Washington University campus. The initiation and installation ceremonies were attended by 20 initiates, six honorary initiates and approximately 10 family members and friends of the new initiates. Mr. Stacy Klippenstein, Director of University Housing and New Student Programs; Dr. James Pappas, Professor of Teacher Education and Director of Academic

Service Learning; and Dr. Charlotte Tullos, Vice President for Student Affairs and Enrollment Management were instrumental in advising the charter group.

Before the installation ceremony, the installing officer, Dr. James Stemler, the new chapter advisors, new initiates and honorary members lined up outside the room and proceeded into the room. The initiates sat in the row in front of the initiation tables. After taking the Alpha Lambda Delta pledge, every person's name was called. Each initiate signed the chapter roll, received his or her certificate and jewelry and shook hands with advisors Mr. Stacy Klippenstein and Dr. James Pappas.

After the induction of the student members, the six honorary members were inducted. A summary of their accomplishments was read by the officers and the advisors to the audience.

Following the initiation of the charter members by Dr. Stemler, the chapter officers were installed. After the officers installation, Dr. Stemler announced that it was his pleasure to install the new Alpha Lambda Delta chapter on behalf of the National Council. Upon presentation of the national charter to the chapter by Dr. Stemler, chapter President Jason Barnes accepted the charter and made remarks.

After the ceremony ended, official pictures were taken for the chapter and the Flame, in addition to pictures taken by family and friends. A reception with cake and punch was shared by the new initiates and their guests. Congratulations to each member was extended by the college community and Dr. Stemler.

CLEVELAND STATE UNIVERSITY

April 6, 2003

Cleveland, OH

By Dr. Herman "Butch" Hill

The installation ceremony took place at the Joseph E. Cole Center on the Cleveland State University Campus. Ninety-two students and ten honorary members were inducted in the charter group. The honorary members included University President Michael Schwartz; Provost Chin Kuo; Vice President for Student Affairs & Minority Affairs Njeri Nuru-Holm; Dean of Student Life Diane Dillard; Assistant Vice President Donna Whyte, Melodie Yates, and Peter Trumpower, all from the Office of Minority Affairs and Community Relations; Faculty Advisor Dr. Louis Barbato; and Administrative Advisor Paul Putman and Kelly McCarthy, both of the Department of Student Life.

President Schwartz and Provost Kuo both spoke briefly at the Installation. Schwartz spoke humorously about how the new initiates' academic accomplishments surpassed



(Above) New chapter members at Cleveland State University. (Left) The installation ceremony was a success. (Far Left) Dr. Hill poses with chapter advisors.

his own in his first year of college. Kuo explained his anticipation that establishing Alpha Lambda Delta on the CSU campus was an important step in building an honors program there.

Paul Putman's roles in getting Alpha Lambda Delta established at Cleveland State were many, and obvious. He had been instrumental in starting the original petition and organizing the Installation Service. He even constructed the electric candles for the service!

Officers installed as part of the ceremony were: President, Shahana Jabeen; Vice-President, Lauren Eaton; Secretary, Jenna Maddocks; Treasurer, Gerald Rudowsky; Editor, Christopher Evanich; Historian, Mark Durica; Junior Advisor, Maninder Singh; and Senior Advisor, Carol Sterl.

The Installation was followed by a catered reception, where new members and guests lingered long after the 3 p.m. scheduled close of the service.

FRANKLIN COLLEGE

May 8, 2003

Franklin, IN

By Dr. Susan Melson Huffman

The installation of the Alpha Lambda Delta chapter at Franklin College was held on Thursday, May 8, 2003 at 6:00 PM in the Chapel on the campus in Franklin, Indiana. Over fifty initiates and nine honorary members attended the initiation and installation ceremonies. Due to the event being held on a busy weeknight near the end of the spring semester, family and other guests did not attend. Dr. G. Dan Callon, Professor of Math and long time advisor to the Laurels and Lancers local freshman honor society, and Kevin Ploeger, First-Year Experience Center Coordinator, were instrumental in bringing Alpha

Lambda Delta to Franklin College and helped coordinate the charter group's installation.

Prior to the installation ceremony, the installing officer, Dr. Susan Melson Huffman, the new chapter advisors, initiates, and honorary members lined up and processed into the chapel. The initiates sat in the first three rows of pews in front of the initiation tables. After leading the charter group in the Alpha Lambda Delta pledge, every person's name was called. As

their names were read, initiates came forward, signed the chapter book, received a certificate and jewelry, and shook

hands with advisors Kevin Ploeger and Dr. G. Dan Callon.

After the student members were inducted, Dr. Susan Melson Huffman first inducted into honorary membership the two advisors, Kevin Ploeger and Dan Callon.

Dr. Huffman then facilitated the induction of seven of the eight remaining honorary members. Mr. Ploeger and Dr. Callon assisted by reading the citations for each new honorary.

Following the initiation of students and honorary members, Dr. Huffman installed the chapter officers. After the officer installation, Dr. Huffman announced that she was pleased to install this new chapter on behalf of the National Council. Given all of the activities the chapter had already completed, Dr. Huffman challenged them to continue this good energy and encouraged them to apply for an Order of the Torch award in the near future.

Dr. Huffman then installed the Laurels and Lancers



New chapter members at Franklin College. (Left) Dr. Susan Huffman (center) poses with chapter advisors and officers.



Franklin College chapter of Alpha Lambda Delta, and presented the beautifully matted and framed charter to President Angela Berty. Angela happily accepted the charter on behalf of the Franklin College campus. She expressed pride in being given the opportunity to lead this honor society in its first year on the campus and thanked all of those who had made the night possible.

After the ceremony ended, the new initiates and honorary members stayed for some group photographs and gathered for light refreshments in the foyer of the chapel.

UNIVERSITY OF LA VERNE

February 12, 2003

La Verne, CA

By Gloria Flores, Staff Writer at ULV

The Alpha Lambda Delta honor society received national recognition at their induction ceremony last week. With more than 230 chapters across the United States, Alpha Lambda Delta is part of the Association of College Honor Societies and recognizes academic excellence.

"I feel honored to be chosen as an inductee into this national honor society," said Amber Peterson, a third year liberal studies major.

Only 15 percent of college freshmen are invited to join Alpha Lambda Delta by being nominated during their first year of college.

"The process of establishing a national chapter was very involved," said faculty advisor, Gerard Lavatori.

Barbara Jefferson, founding faculty advisor and administrative director, was instrumental in beginning the local chapter. After three years as a local chapter, ULV was eligible to petition for the induction of a national chapter, she said.

Kathleen Lamkin, professor of musicology, and Alfred Clark, associate vice-president of academic affairs,



ALD Council Member-at-Large Kris Guzman (second from left) installed the new chapter at the University of La Verne.

worked last summer on the application for the national chapter.

The application asked for a history of the local chapter, a description of the campus environment and letters of support from the president, provost, dean of student affairs, and other officials. The petition was approved last fall.

“(This) allows for national recognition of ULV students who excel academically in their freshman year and demonstrates ULV’s participation in a community of national universities that promote academic excellence,” Lavatori said.

Membership is offered to students registered in at least 12 units toward a bachelors degree, who rank in the top 20 percent of their freshman class.

Aside from lifetime membership to the honor society, membership benefits include more than \$100,000 in available scholarship money, certificates, logo pins, charms and other local and national awards.

At the start of the Wednesday ceremony, friends and family of those inducted seated themselves in Founders Auditorium to the music played by students Masam1 Tomiia on piano, and Misa Kitagawa on violin.

Kristian Guzman, the installing officer, who represented the National Council of Alpha Lambda Delta, led the initiation of ULV’s charter members. Honorary members were next to be initiated. Their names were read along with a brief summary of their accomplishments.

After the first initiations, ULV chapter officers of Alpha Lambda Delta 2003 were installed.

“It is a great honor to be the first vice president of ULV’s Alpha Lambda Delta chapter because I have the opportunity to set the bar for other officers to come,” Luis Chavez said.

Guzman then installed the ULV Chapter of Alpha Lambda Delta, making ULV an official chapter of the national honor society.

UNIVERSITY OF MINNESOTA - CROOKSTON

March 24, 2003

Crookston, MN

By Jonathan Hovda

On Monday, March 24, 2003, at 7:00 p.m., in Crookston, MN, in the recently renovated Kiehle Auditorium, the University of Minnesota, Crookston, held its Alpha Lambda Delta chapter installation ceremony. At the ceremony, a large number of family, friends and faculty, watched 28 initiates and 5 honorary members become initiated into Alpha Lambda Delta. Before the ceremony, the installing officers, Jonathan Hovda and Dr. Jan Vandever met with the advisors, Kami Mattson and Dr. James Thomasson, as well as the new officers. Kami

Mattson, Dr. Thomasson, and the new officers were all instrumental in establishing this new chapter of Alpha Lambda Delta.

All new members, installing officers, advisors, and honorary members assembled in the foyer prior to the start of the ceremony. During the processional, the UMC Choir performed a beautiful choral selection. The initiates sat in the first two rows of the auditorium. Once seated, the choir sang the National Anthem.

After taking the Alpha Lambda Delta pledge, every initiate’s name was called. They each came forward, signed the chapter roll, received their certificate and pin, and shook hands with the advisors and installing officers. Following the initiate’s induction, the Alpha Lambda Delta Administrative Advisor, Kami Mattson was inducted. Kami is the Director of the First Year Experience program at the University of Minnesota-Crookston. Next, the Faculty Advisor, Dr. James Thomasson was inducted. Dr. Thomasson is an Associate Professor of Philosophy at UM-Crookston.

Three additional honorary members were initiated at the ceremony. They are Dr. Donald Sargeant, Chancellor of the University of Minnesota-Crookston, Dr. Douglas Knowlton, Vice Chancellor for Academic Affairs, and Dr. Robert Nelson, Vice Chancellor for Student Affairs.

Officers in the newly installed chapter were also named. Following the naming of the new officers, DeAnn Ebert, the chapter president was presented with the chapter charter and made a few remarks concerning Alpha Lambda Delta. Immediately following the ceremony, all newly initiated members, honorary members, friends, and family were invited to a wonderful reception with cake and punch.

RAMAPO COLLEGE OF NEW JERSEY

May 3, 2003

Mahwah, NJ

By Chrissy Kerwin, Chapter Historian

For the past two years, Ramapo College of New Jersey has been in the process of forming a new chapter of Alpha Lambda Delta. The process began in the spring of 2002 with Patrick Chang, Associate Dean of Students, and student Leigh Darden who sent letters to freshmen who were eligible for the honor society.

The chapter officially began in the spring of 2003 with a Pledge Ceremony taking place, followed two weeks later by the Chapter Installation Ceremony on May 3, 2003. At this ceremony, the chapter was initiated and installed into National Alpha Lambda Delta Honor Society by Dr. Dorothy Anderson, former ALD National President.

A total of 101 students were inducted, including both freshmen and sophomores who had been eligible from the



The new ALD chapter at Ramapo College of New Jersey inducted 101 new members. (Below) Former ALD National President Dorothy Anderson presents the ALD charter to Ramapo chapter officers.



previous spring and 12 honorary inductees.

The chapter's formation would not have been possible without the immeasurable help and assistance of Patrick Chang, Leigh Darden, and Wendy Polanco along the way.

So far, Ramapo's ALD chapter members have been involved with the summer program for incoming freshmen, called FAR (Freshmen Advising and Registration), and Freshman Orientation. Chapter President Jill Freudenfels and Secretary Kim Velocci attended this year's National ALD conference in Anaheim, California.

Though a new chapter, Ramapo is continually growing and brainstorming about new ways to assist and encourage academic excellence among its freshmen.

SOUTH UNIVERSITY

May 31, 2003

West Palm Beach, FL

By Dr. Glenda Earwood

The installation of the Alpha Lambda Delta chapter at South University was held on Saturday, May 31, 2003 at 5:30 p.m. at the Marriott Palm Beach Gardens in West Palm Beach, Florida. The initiation and installation ceremonies were attended by the initiates and over 100 family members and friends of the 66 new student members. Dean of Students Deborah Casey-Powell was instrumental in advising the charter group. Bonnie Manley of the Mathematics Department served as faculty advisor for the ceremony.

Before the installation ceremony, the installing officer, Dr. Glenda Earwood, the new chapter advisors, new initiates and honorary members lined up outside

the auditorium. The new initiates processed into the room to the tune of "We've Only Just Begun" sung by one of the new initiates. The initiates sat in two

rows in front of the initiation tables. After taking the Alpha Lambda Delta pledge, Deborah Casey-Powell called each initiate's name. Each initiate signed the chapter roll, received his or her certificate from Chapter President Cleo Hernandez and received his or her charm from Executive Director Dr. Glenda Earwood.

After the induction of the student members, the three honorary members were inducted. A summary of their accomplishments was read by Dr. Earwood to the audience. Following the initiation of the charter members by Dr. Earwood, the chapter officers were installed.

After the officers installation, Dr. Earwood announced that it was her pleasure to install the new Alpha Lambda Delta chapter on behalf of the National Council.

Upon presentation of the national charter to the chapter by Dr. Earwood, chapter president Cleo Hernandez accepted the charter and made remarks. Ms. Hernandez expressed her pride in having the validation of an honor society like Alpha Lambda Delta as this is the first national honor society on the South University campus. She



committed to upholding the mission and values of the honor society on the campus of South University and thanked those who had been instrumental in bringing the society to the campus.

Cleo then introduced Stephanie Trudeau who announced the winner of the Bonnie Manley Scholarship. The winners of the Dean Deborah Casey-Powell Scholarship and the Mr. James Simpson Scholarship were also announced.

After the ceremony ended, several pictures of the new initiates were taken. Congratulations was extended to each member by the University community and Dr. Earwood.

Following a brief reception, the students participated in the Student Awards Banquet Black and White Ball also at the Palm Beach Gardens Marriott. After a fine dinner of herb roasted chicken and beef tenderloin tips, many awards were presented by Dean Deborah Casey-Powell. Two of the new Alpha Lambda Delta members were crowned King and Queen.



The installation ceremony at UT - Pan American was made even more special by the presence of Dr. Patricia Graham, who was completing the last months of her term as National President.

UNIVERSITY OF TEXAS - PAN AMERICAN

April 13, 2003

Edinburg, TX

By Dr. Patricia Graham

The installation of the Alpha Lambda Delta chapter at the University of Texas - Pan American was held on Sunday afternoon, April 13, 2003, in the University Student Union in Edinburg, Texas. The initiates, family members and friends of the initiates, university faculty and administrators attended the initiation and installation ceremonies.

Ms. Jeanette Broshears, Director Special Programs, served as Administrative Advisor. Dr. John Bokina, Professor of Political Science, served as Faculty Advisor. Ms. Broshears has served as administrative advisor for the local freshman honor society and has been one of the strongest supporters for bringing the national chapter to campus.

Before the installation ceremony, the installing officer, Dr. Patricia A. Graham, met with the new chapter officers

and advisors to explain the afternoon's proceedings. Just before the ceremony the new chapter advisors, honorary members, and initiates lined up and processed into the auditorium. The initiates sat in three rows in front of the initiation table. After taking the Alpha Lambda Delta pledge, each person's name was called.

Each initiate signed the chapter roll, received his or her certificate and jewelry, and shook hands with advisors, Dr. Bokina and Ms. Broshears.

Fifty-five student members and four honorary members were initiated. The four honorary members included Dr. Rodolfo Arevalo, Provost and Vice President of Academic Affairs; Dr. John Edwards, Vice President for Enrollment and Student Services; Dr. John Bokina, Professor of Political Science and Faculty Advisor; and Ms. Jeanette Broshears, Director Special Programs and Administrative Advisor.

Following the initiation of the charter members by Dr. Graham, the chapter officers were installed. After the officers' installation, Dr. Graham announced that it was an honor to install the new Alpha Lambda Delta chapter on behalf of the National Council. Upon presentation of the national charter to the chapter by Dr. Graham, the chapter president, Jessica Fierros, accepted the charter and made remarks. Dr. Graham addressed the new initiates and their families and friends and university faculty and administrators.

A reception was held following the ceremony, and family members, friends, and a university photographer took many pictures of the charter members. The university community and Dr. Graham extended congratulations to each member.

WEST VIRGINIA UNIVERSITY

April 27, 2003

Morgantown, WV

By Dr. Herman "Butch" Hill

The installation ceremony took place at the West Virginia University Alumni Center on the Evansdale Campus. Forty-seven students and eleven honorary members were inducted in the charter group. The honorary members included University President David C. Hardesty, Jr.; faculty advisor Dr. Hillar Klandorf; administrative advisor Mrs. Robin Hall; Associate Dean of Student Affairs and Residential Education, Dr. David Stewart; Residential Education faculty members, Bob Duval, Robin Jones, Mike Lynch, Diana Middleton, Gus Paglialunga, and David Pariser; and undergraduate student, L. T. Schoonover who had been instrumental in obtaining the Alpha Lambda Delta charter.

The installation ceremony concluded with congratulatory remarks by both President Hardesty and Associate



Dean Stewart, and installation of officers for the coming year. Those officers were: Jennifer Audia, President; Nai Ying Chao, Vice President; Stefanie Tanner, Secretary; Lindsay Kapsar, Treasurer; Karla Buckel, Historian; Ashley Kessler, Editor; and Meghan Burns and Cara Spaziani, Residential Hall Representatives.

Following the ceremony, initiates, together with their families and guests enjoyed an elegant buffet luncheon.

ALD MERCHANDISE



Looking for a great way to show your Alpha Lambda Delta spirit?
Buy your official ALD gear on-line!

www.mercer.edu/ald

Find t-shirts, caps, polo shirts, honor cords, and our brand-new
ALD Static Window Stickers!

Chapters can place orders by calling 1-800-9ALPHA1
or e-mail ald@mercer.edu.

ORDER OF THE TORCH

Five outstanding chapters receive the Order of the Torch award for 2003-2004.

AUBURN UNIVERSITY

September 25, 2003

Presented by Dr. Glenda Earwood

Dr. Glenda Earwood, Executive Director of National Alpha Lambda Delta, presented the Order of the Torch Award to the Auburn University chapter on Thursday, September 25th, 2003. The meeting was attended by a number of current and former Alpha Lambda Delta officers and members, faculty advisors, and persons interested in the Alpha Lambda Delta chapter at Auburn.

Looking like a group of young professionals dressed for success, the students attending the ceremony heard remarks from Brittany Johnson, chapter advisor, who presided over the Torch Award ceremony. Kim Reaves, past chapter president, reviewed some of the chapter activities which helped the chapter win the Torch Award. Current chapter president Brant Gentry listed the goals for the chapter for the upcoming year. Nancy McDaniel, Assistant Vice President for Student Affairs expressed her pride in the accomplishments of the Alpha Lambda Delta chapter members.

Dr. Glenda Earwood, an alum of Auburn University, and Executive Director of Alpha Lambda Delta shared that her first experience with Alpha Lambda Delta was her own initiation into the honor society as a freshmen at Auburn.

The Auburn ALD chapter celebrated its 50th anniversary during 2002. The chapter had a very active year marked by initiation held on A-Day

Weekend to the Caught Studying program on Dead Day to the distribution of Study Tips to involving members through committees.

The chapter was not only involved in promoting Alpha Lambda Delta, but also promoted other opportunities for campus involvement. The number of community service projects the chapter was involved in was very impressive.

Several individual members from the Auburn chapter distinguished themselves and seized the opportunities presented by national Alpha Lambda Delta. Chapter president, Kim Reaves, was elected to a three year position as a Member at Large on the National Council. The Auburn chapter has produced five fellowship recipients. The most recent winner was Jennifer Wilbeck who served as community service chairperson in the Auburn chapter and is now enrolled at the School of Optometry at UAB. The Auburn University Alpha Lambda Delta chapter has a long, rich and rewarding history with the national organization.

In her remarks commending the chapter for achieving the prestigious award, Dr. Earwood suggested that the chapter members gained something more than the Torch Award - values that are the important lessons in life. Dr. Earwood suggested that the lessons learned from participating in these activities would be utilized

long after the chapter members leave the portals of the Auburn University campus.

Dr. Earwood encouraged the Auburn University ALD chapter to strive for continued success and challenged the chapter to earn the Maintaining the Flame commendation. Dr. Earwood concluded the ceremony with the Admonition from the ALD initiation ritual.

UCLA

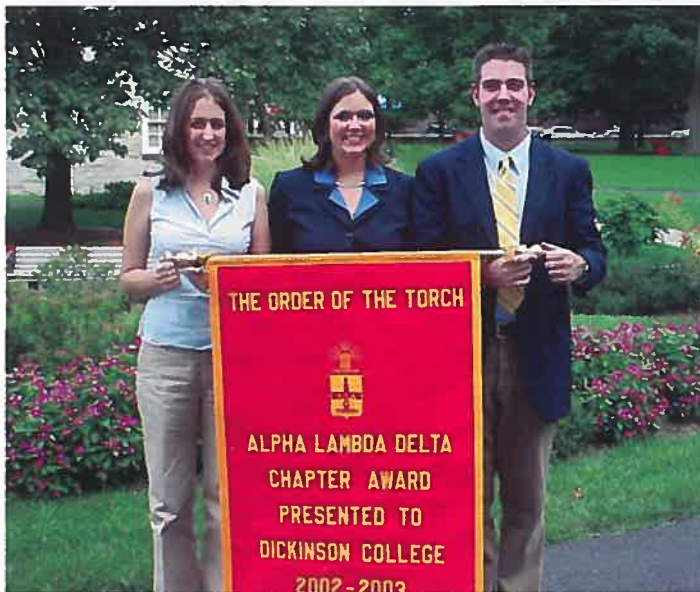
October 7, 2003

Presented by Ms. Kristian Guzman

Kristian Guzman Council Member-At-Large of National Alpha Lambda Delta presented the Order of the Torch Award to the University California of Los Angeles chapter of Alpha Lambda Delta at a on Tuesday, October 7, 2003. The meeting was attended by a number of current and former Alpha Lambda Delta officers, members, faculty advisors and members of PES.

UCLA





DICKINSON

After greeting the guests and indicating the purpose of this special occasion, UCLA ALD Chapter Advisor Brian A. Carlisle called on past president Debbie Lin. Debbie outlined some of the activities that the chapter planned and implemented last year. She talked about the hard work of the Historian and long hours she dedicated to the project. Brain introduced Dr. Robert Naples. Dr. Naples congratulated the group for the award and encouraged them to continue their hard work.

Kris Guzman was introduced by Debbie Lin as the member of the ALD National Council member and USC ALD Chapter Advisor. Ms. Guzman expressed how the National Council Members was impressed with the outstanding work that UCLA presented in their scrapbook. She discussed the history of the Torch award and the record breaking number of fourteen applications for 2003 - the most ever to apply for the Torch. Ms. Guzman shared her enthusiasm at being part of this award ceremony. Past President Debbie Lin accepted the Order of the Torch Award on behalf of the University California of

Los Angeles. The new installed President expressed her pride in the accomplishments of the Alpha Lambda Delta chapter members. After several pictures of the Torch Banner were taken, the guests were treated to refreshments including cookies and cake to celebrate the award.

DICKINSON COLLEGE

August 31, 2003

Presented by Ms. Angela Congrove

Dickinson College started off the academic year with a bang as their Alpha Lambda Delta Chapter was presented with the prestigious Order of the Torch Award. The award was presented during Dickinson's Opening Convocation on August 31, 2003.

The ceremony began with the tolling of the bells, and the procession of faculty members, clad in regalia, across campus. Leading the procession of the stage party was senior student member-at-large Angela M. Congrove, who was given the privilege of presenting the Order of the Torch to Dickinson.

Dickinson President William G. Durden convened the college for the 2003-2004 academic year as well as welcomed the freshmen to Dickinson College. Other academic presentations ensued before Angela Congrove was introduced to present the Order of the Torch award. Ms. Congrove explained to the new freshmen in the audience how unique Alpha Lambda

Delta is as an organization because it enables underclassmen to hold leadership positions. She continued by praising the 2002-2003 executive board for their exemplary leadership and teamwork skills.

The executive board operated under the guidance of advisors Jeanette Richards and Jill Emerson and support of Dean Joyce Bylander. Officers of the executive board included President R.J. Long, Vice-President Becky Harper, Secretary Kym Lewis, Treasurer Ana Marie Vasilescu, and Historian Nicki Eicher. This board of fabulous leaders engaged the Dickinson and Carlisle communities through organizing numerous events.

Ms. Congrove then called President R.J. Long and Vice-President Becky Harper to come forward and accept the Order of the Torch award on behalf of Dickinson College. The banner was then unveiled and followed with a round of applause.

IUPUI

December 9, 2003

Presented by Dr. Susan Huffman

National Vice President for Chapter Relations and Expansion, Dr. Susan Melson Huffman, presented the 2003 Order of the Torch Award to the Alpha Lambda Delta chapter of Indiana University-Purdue University at Indianapolis on Tuesday, December 9, 2003, at 4:00 PM.

A presentation of the last year's chapter activities was being shown as members and guests entered the room. Chapter Advisor, Lisa Ruch, presided over the ceremony and thanked everyone who was able to come despite the event being held during finals week. Present for the ceremony were Dr. Scott Evenbeck, Dean of the University College, Dr. Susan Melson Huffman, National Vice President,

and many current and past chapter officers.

After welcoming the guests, Lisa Ruch introduced Dr. Susan Melson Huffman and noted the connection between IUPUI and Dr. Huffman's institution, Purdue University.

Dr. Huffman congratulated the chapter and expressed her delight at being selected to present the Order of the Torch to IUPUI, especially since she has gotten well acquainted with their chapter advisor during times together at several of the annual leadership workshops. Before presenting the award, Dr. Huffman gave a brief history of the Order of the Torch and the basis for selecting winning chapters. Dr. Huffman added that the competition was very strong, and she named the four additional winners.

In her presentation, Dr. Huffman praised the chapter for its many service-oriented activities—serving both the IUPUI campus and the surrounding community. She said that the scrapbook presentation showed evidence of a commitment to getting members involved and increasing membership by publicizing its activities.

Dean Evenbeck added his congratulations to the chapter advisor and officers for their successful year and for the many contributions that they have continued to make to their campus and surrounding community. He

expressed pride in their undertakings and encouraged them to continue to be active and to grow their membership even more. He also noted their increased membership last year that resulted in national recognition.

Two of last year's officers, Erin Hillenburg and Eric Sickels, spoke about last year's organization and its success and shared details about the activities that have been accomplished this year. They also reported on some of the future plans and invited the members to join them in their preparations for helping a less fortunate family enjoy the coming holidays.

Chapter Advisor Lisa Ruch thanked everyone in attendance and expressed her hopes for another great year. The ceremony was followed by some group photographs and a reception.

SAINT VINCENT COLLEGE

September 27, 2003

Presented by Dr. Herman "Butch" Hill

Herman "Butch" Hill, Vice President for Finance and Long-Range Planning, presented the Order of the Torch award to the Alpha Lambda Delta chapter at St. Vincent College on Saturday, September 27, 2003. St. Vincent College has only had an ALD chapter since 1992, but this was the second time that they won the Torch!

The Science Center Amphitheater was filled with current ALD members, families, friends, as well as for-

mer officers from as far away as Pittsburgh. Fr. Brian Boosel, the Director of Campus Ministry, did the invocation. After a short welcoming speech from Br. Norman Hipps, Senior Vice President for Student Affairs, and the Torch Presentation, Dr. Thomas Mans, Vice President for Academic Affairs, gave a keynote speech stressing how well Alpha Lambda Delta's tradition of service fit into the Benedictine way.

Induction of honorary members followed, which included the surprise of awarding of honorary membership to Ms. Pat Owens, secretary to ALD Administrative Alice Kaylor. Faculty Advisor Dr. John Smetanka, Assistant Professor of Physics and Melanie Wolenter, 2003-2004 ALD President presided over this.

Jessica Morrell, immediate Past President and Senior Advisor then gave an electronic slide-show reprise of the 2002-2003 activities of Alpha Lambda Delta. The well-done presentation underscored how deserving the chapter was of the Torch Award.

Following congratulatory remarks by Dr. Lucas Lamadrid, Associate Vice President for Student Affairs and Dean of Students, Administrative

Advisor Alice Kaylor, Dean of Studies introduced special guests, and Fr. Brian Boosel gave the Benediction.

The ceremony was followed by a reception, featuring a huge variety of delicious desserts.

IUPUI



Alpha Lambda Delta Fraternity
ALPHA LAMBDA DELTA
Be it known by these things
NATIONAL COUNCIL

PRESIDENT

Dr. James G. Stemler
Associate Dean & Director, Honors
Program
University of Portland
5000 N. Willamette Boulevard
Portland, OR 97203
503-943-7221; FAX: 503-943-7804
E-mail: stemler@up.edu

**VICE PRESIDENT FOR FINANCE
& LONG RANGE PLANNING**

Dr. Herman "Butch" Hill
Ombudsman
Ohio University
Trisolini Gallery Rm 204
Athens, OH 45701
740-593-4269; FAX: 740-593-4276
E-mail: hill@ohiou.edu

**VICE-PRESIDENT FOR CHAPTER
RELATIONS & EXPANSION**

Dr. Susan M. Huffman
General Manager - Hilltop
Apartments
23-5 Hilltop Dr.
West Lafayette, IN 47906
765-494-2390; FAX 765-494-4815
E-mail: smhuffman@purdue.edu

ARCHIVIST

Ms. Ellen Swain
Archives Research Center
University of Illinois
1707 S. Orchard
Urbana, IL 61801
217-333-7841; FAX: 217-244-4300
E-mail: eswain@ux1.cso.uiuc.edu

EDITOR & HISTORIAN

Dr. Michael R. Nichols
Counseling Center
CPO 52
571 Student Service Bldg.
Eastern Kentucky University
Richmond, KY 40475-3152
859-622-1303; FAX: 859-622-1305
E-mail: Mike.Nichols@eku.edu

MEMBERS-AT-LARGE

Dr. Katherine P. Beardsley
2141 Tydings Hall
University of Maryland
College Park, MD 20742
301-405-1692; FAX: 301-314-9086
E-mail: kbeardsley@bsos.umd.edu

Angela Congrove
SMC 10241
One Otterbein College
Westerville, OH 43081
E-mail: acongrove@hotmail.com

Kristian Guzman
Office of College Advising
3454 Trousdale Pkwy., Ste. 120
University of Southern California
Los Angeles, CA 90089
213-740-3663; FAX: 213-740-1338
E-mail: krguzman@usc.edu

Dr. Harry Hale
University of Louisiana at Monroe
106 Stubbs Hall - Sociology
101 University Blvd.
Monroe, LA 71209
318-342-1437
E-mail: hale@ulm.edu

Kim Reaves
560 Perry St. Apt. 417
Auburn, AL 36830
334-821-6130
E-mail: reavekm@auburn.edu

