

APPROVED
ΑΔΔ
ALPHA
LAMBDA
DELTA

VOL. 43
2005

THE

FLAMME

A PUBLICATION OF NATIONAL ALPHA LAMBDA DELTA



EXCITING!



INFORMATIVE!



PRESENTING...
HEROES
OF ALPHA LAMBDA DELTA!

WHAT'S INSIDE...

AT THE 1992 NATIONAL COUNCIL MEETING, A MISSION STATEMENT AND AN EDITORIAL POLICY WERE ADOPTED FOR

THE FLAME

MISSION STATEMENT:
TO COMMUNICATE THE ACTIVITIES, IDEALS, AND ACCOMPLISHMENTS OF ALPHA LAMBDA DELTA WITH THE VISION TO CREATE AND PROJECT A POSITIVE IMAGE OF THE SOCIETY AS A PROGRESSIVE AND RELEVANT COLLEGIATE ORGANIZATION WITH A COMMITMENT TOWARDS EXCELLENCE.

EDITORIAL POLICY:
ALPHA LAMBDA DELTA RESERVES THE RIGHT TO EXERCISE EDITORIAL DECISIONS OVER WRITTEN MATERIALS AND/OR ARTICLES SUBMITTED FOR PUBLICATION. CONTENT, DESIGN, AND LAYOUT WILL BE THE DECISION OF THE EDITORIAL STAFF. AS A COURTESY TO FEATURE WRITERS AND CONTRIBUTORS TO THE FLAME, EVERY ATTEMPT WILL BE MADE TO FURNISH ADVANCE COPY OF MATERIAL AS IT WILL APPEAR IN PRINT.

THE NATIONAL COUNCIL EDITOR (DR. MIKE NICHOLS, L) AND HIS TRUSTY SIDEKICK, DIRECTOR OF COMMUNICATIONS (LEE GREENWAY, R)



HEROES OF ALPHA LAMBDA DELTA	1
KANSAS CITY, HERE WE COME... ..	2
NATIONAL COUNCIL NEWS.....	4
COUNCIL MEMBER RESOLUTIONS.....	5
NEW COUNCIL MEMBERS.....	6
CHAPTER REPORTS.....	7
ADVISER OF THE YEAR!.....	8
E.D. ADVISERS OF THE YEAR.....	8
700,000 - A SPECIAL REPORT.....	9
GRADUATE FELLOWSHIPS	10
TROW SCHOLARSHIPS	12
CHAPTER LIST.....	14
CHAPTER ANNIVERSARIES.....	16
KANSAS CITY - A STUDY IN PHOTOGRAPHS.....	18
CHAPTER MEMBERSHIP AWARDS.....	23
NEW CHAPTERS	30
THE ORDER OF THE TORCH	36

NATIONAL ALPHA LAMBDA DELTA

GLEND A EARWOOD, EXECUTIVE DIRECTOR
LEE GREENWAY, DIRECTOR OF COMMUNICATION

P.O. BOX 4403
MACON, GA 31208-4403
1-800-9-ALPHA-1
FAX: 478-744-9924

ALD@NATIONALALD.ORG
WWW.NATIONALALD.ORG

**FASTER THAN A SPEEDING BULLET...
MORE POWERFUL THAN A LOCOMOTIVE...
A HIGHER G.P.A. THAN 80% OF THEIR
CLASSMATES...**

HEROES OF ALPHA LAMBDA DELTA!

Night falls on the ivy-covered walls of University Hall. A single light burns in a dormitory window, throwing light across the freshly-mown quadrangle. Behind that window sits a mild-mannered student, known by many on campus as a scholar, as an exceptional student. What the students at this respected home of learning may not know is that the young person sitting at their desk on the other side of that window is also a hero.

He may not have x-ray vision, the ability to outrun a speeding locomotive, or web-slingers, but this student is a member of a select society of top minds – he is an Alpha Lambda Delta member!

In the world of higher education, the members of Alpha Lambda Delta are truly heroes – they have taken up the gauntlet of higher education, and are not only succeeding at running it, they are, indeed, ahead of the pack. With performance in the top 20 percent of their classes, Alpha Lambda Delta members are the leaders of their campus communities.

At our chapters, now numbering 251 across the continental U.S., Alpha Lambda Delta members every day reach

out to their compatriots on the journey to higher education, and extend the assistance that

...THE HEROES OF ALPHA LAMBDA DELTA ARE REAL, THEY ARE ALL AROUND US EVERY DAY, AND THEY ARE READY TO TAKE ON THE CHALLENGE OF CONTINUING ACADEMIC EXCELLENCE.

they are uniquely outfitted to offer. The student heroes of Alpha Lambda Delta lead by example – they demonstrate by their presence that the collegiate experience can be a success for those who strive to achieve. They take on roles of leadership in the classroom and out, through their own excellence encouraging others to excel.

Whether it's tutoring fellow students in the Academic Resource Center, making peanut-butter and jelly sandwiches for a local soup kitchen, helping out at a local elementary school's art classes, or working with Habitat For Humanity, Alpha Lambda Delta members take their selfless acts of everyday heroism with them into the commu-

nity-at-large, building a culture of meritorious service to their fellow humans.

No member of the X-Men ever served the world around him so vigorously as Alpha Lambda Delta members do all around the world; no feat of Kryptonian strength ever did so much to help mankind. This is not the stuff of Detective Comics, this is not a Stan Lee creation – the heroes of Alpha Lambda Delta are real, they are all around us every day, and they are ready to take on the challenge of continuing academic excellence.

With over 700,000 members, the Alpha Lambda Delta Honor Society for First Year Students is well-armed to tackle the tests and the issues facing college students today. Drawing on a history of over 80 years of success, the heroes of Alpha Lambda Delta have the experience, the knowledge, and the abilities to become leaders and a force for great change in the years to come.

We salute you, heroes of Alpha Lambda Delta, and are honored to be a part of your team!

Glenda Earwood

Glenda Earwood
Executive Director



RECOGNIZING EXCELLENCE...

CONTINUING TRADITION...

PRESERVING INTEGRITY!

KANSAS CITY, HERE WE COME...

ALPHA LAMBDA DELTA MEMBERS TAKE ON THE BIG KC FOR THE 2004 NATIONAL LEADERSHIP WORKSHOP

On October 23 to 25, 2004, 141 students and 33 advisors representing 74 Alpha Lambda Delta chapters gathered in Kansas City Missouri for the Annual Leadership/Activity Workshop. In three short days, students and advisers participated in a fast-paced, sometimes exhausting, but fun filled learning adventure. We learned together, got great new ideas to bring back home to local chapters, made new friends, and celebrated the extraordinary 80-year history of Alpha Lambda Delta.

The conference began with a welcome from Dr. Glenda Earwood, Executive Director of Alpha Lambda Delta, in which she outlined the programs and goals of the workshop. We were all challenged by an inspiring and humorous keynote address from Kansas City's Pearl Rovaris-MacDonald, who urged students to take advantage of their educational opportunities inside and outside the classroom. Among her many accomplishments, she is a stand-up comedian at local comedy clubs, and she sure made us laugh. She has an extensive schedule of public speaking to business groups as well as students, and it was easy for us to see why she was in such demand. She used audience participation to illus-

trate points about leadership, and she was rewarded with a standing ovation for a wonderful beginning to the conference.

Dr. Susan Huffman, ALD's Vice President for Chapter Relations and Purdue University's advisor, got students moving and meeting each other with get acquainted mixers and the traditional t-shirt exchange. Lee Greenway, ALD's Director of Communication, led students through the CANSTRUCTION Team Challenge. Students were divided into teams and given canned and boxed food containers and told to build something. The results were extraordinary, and ALD students really got a chance to show off their

creativity and imagination.

During the CANSTRUCTION activity, National President, Dr. Jim Stemler of the University of Portland led an advisers get-together to discuss chapter issues.

On Saturday, workshops filled the morning, and each student and adviser was able to attend four different programs. These were led by students, National Council members, and advisers and included such topics as:

- Web site for Chapters—chapterxyz.com
- Leadership—Its More than You Think
- Student Adviser Relationships—A Recipe for Success
- Preparing for the Future—National Scholarship and Fellowship Competition
- Creativity in Chapter Programming
 - Advisers Only
 - Ethics: What You Do When No One is Looking
 - Converting Eligible Students to New Members
 - Making A Difference
 - Winning Order of the Torch

After a box lunch and roundtable discussions, stu-



PEARL ROVARIS-MCDONALD





SOME EXAMPLES OF 1924 GARB WERE ON DISPLAY

dents and advisors had some free time to explore Kansas City's many attractions, including the Crowne Center Shops, the Kemper Museum of Contemporary Art, the Nelson-Atkins Museum of Art, the American Jazz Museum, the Negro Leagues Baseball Museum, Union Station, and much more.

That evening we reconvened for a

banquet moderated by National President Stemler. A video, "Eighty Years of Alpha Lambda Delta" shows how ALD began and grew into a national honor society with over 200 chapters.

Dr. Donna Fox, a biology teacher, assistant dean, and ALD advisor at George Mason University, was presented with the 2004 Outstanding Advisor Award. Dr. Fox spoke about how much ALD and her students mean to her and the contributions ALD brings to her campus.

Director of Communication Lee Greenway presented the CANSTRUCTION awards. Winners included "Canhenge," a stoplight, and "Porky," the ALD pig. CANSTRUCTION is a national program that boasts over 50 competitions annually, and was sponsored locally by the Kansas City's Harvesters Community Food Network. Jerry Shaffer from Harvesters addressed the workshop participants and thanked them for their donations and explained how they would be used. After competitions, food is then donated to those in



AFTER DINNER ON SATURDAY, IT WAS TIME FOR SOME SOOTHING MELODIES, COURTESY OF ALD MEMBERS AND ASPIRING LOUNGE ACTS.

need, and Harvesters have a 25-year history of helping to feed the hungry. In fact, their average yearly distribution is 1.6 million pounds of food and 1,230,769 meals. Everyone not only had a great time working together to build can creations, but also were moved by the mission and work of Harvesters.

To learn more about Harvesters and CANSTRUCTION, check out these websites:
www.harvesters.org
www.canstruction.org



ALD MEMBERS AT THE 2004 NATIONAL LEADERSHIP WORKSHOP POSE FOR A GROUP PHOTO

After the banquet, ALD members danced and sang the night away with music and karaoke provided by the Boogie Knights, and we were all astounded by the talent for performance our ALD members have!

The following morning we said goodbye to each other after a great weekend. Information was provided about submitting article and pictures to *The Flame* and services were outlined from the national headquarters to chapters. Students will remember the Kansas City workshop as a time in which they learned, were challenged, met new friends, and had a wonderful adventure.



NATIONAL COUNCIL NEWS

NOTES FROM THE 2004 NATIONAL COUNCIL MEETING IN NASHVILLE, TENNESSEE...

The National Council of Alpha Lambda Delta Honor Society conducted its annual meeting this summer to make plans for the future, conduct the business of ALD, plan for expansion, review changes in the National Office, and make financial decisions.

Dr. Glenda Earwood, the ALD Executive Director, gave an overview of the Society as it enters its 80th year. Since the 75th anniversary, membership is up 16% and number of chapters is up 14%! Eight new chapters were installed this past year, and several other petitions are in the works, so we can anticipate a number of new chapters in the near future.

In a significant personnel change, Ms. Rachel Garza, the former Director of Communication, has left ALD to accept the position of Director of Marketing at Mercer University. She has, however, continued to provide consultation to ALD and has remained a loyal supporter. Dr. Earwood introduced Mr. Lee Greenway, the new Director of Communication, who will be directing the ALD's Technology Upgrade Project and designing publications and other media. Lee brings to this assignment a wealth of experience and education, including a bachelor's degree in Communications and Information Technology from Macon State College and a Master's degree in Journalism and Mass Communication from the University of Georgia. He has experience with promotional marketing and project development in Student Affairs, through his work with the Student Life Office at Macon State.

Among the areas and issues discussed by the Council were long-range planning, fellowship and scholarships, Order of the Torch awards, expansion, publications, chapter relations, and finances and investments.

Brian Carlisle of the University of California at Los Angeles was nominated

for a member-at-large position on the Council. His name will be placed on the spring 2005 mail ballot for election by the general membership.

The Publications Committee moved that this resolution be placed in the Minutes to recognize the work of Rachel Garza:

The National Council of Alpha Lambda Delta wishes to recognize and thank Rachel Garza for her extraordinary service in the production of the 80th Anniversary issue of the Flame. With artistic flair and technical expertise, she was able to highlight the latest developments of our exciting present while paying homage to our rich past and historic traditions.

Thank you, Rachel, for your hard work, your commitment to Alpha Lambda Delta, and for making the 80th Anniversary celebration more meaningful.

The following were also recognized in the 2004 Website Competition:

- Auburn University
- University of California – Riverside
- University of California—Los Angeles
- University of Houston
- Otterbein College

After four days of hard work, the Council convened for an 80th anniversary banquet. National President James Stemler presided and the evening was high-

lighted with:

- Passing Our Torches: 80 Years of Alpha Lambda Delta, a video prepared by the National Office
- Reflections from the Historian, in which Dr. Mike Nichols talked about the remarkable life and work of our founder, Dean Maria Leonard
- Reflections from the Recent Past, from immediate Past President Dr. Patricia Graham of the University of Texas at Sar Antonio. Wow! What a trip down memory lane for all of us! Thanks, Dr. Graham!
- Report of the 80th Anniversary Fund Development Committee by Brittany Sheppe, Student Member-at-Large
- Remarks from the First Recipient of the Patricia A. Graham Fellowship, Ms. Angela Congrove, Student Member-at-Large
- A Presentation on "Looking to the Future," by Dr. Butch Hill, Vice President for Finance and Long Range Planning, and Dr. Glenda Earwood.

The evening concluded with Resolutions to honor the work of outgoing members Angela Congrove and Kris Guzman.



COUNCIL MEMBER

RESOLUTIONS

During the 2004 National Council meeting in Nashville (see *National Council News*, opposite) resolutions were drafted and entered into the record honoring two departing members of the National Council.

ANGELA CONGROVE

Whereas, Angela Congrove has enthusiastically and diligently served the National Council for the past three years as Member-at-Large, and,

Whereas, Angela has enhanced and directed the work of many committees, among them the Order of the Torch, Finance, Administration, Expansion, Long Range Planning, and Fellowship and Trow Selection, and,

Whereas, Angela has provided the council and the Society with creative and innovative ideas and has proven to be a powerful negotiator, who is always willing to work through a problem that others might work around, and,



Whereas, Angela has shown her ability to motivate and direct the course of progress at both the National level and at her home campus, Otterbein College; and has exemplified the ideals of Alpha Lambda Delta, as evidenced by her selection as the first recipient of the Patricia Graham Graduate Fellowship, and,

Whereas Angela has always been forthright and honest in her evaluation of the performance and the appearance of the National Office staff, and,

Whereas, Angela has demonstrated a willingness to give voice to the unpopular, lend humor to the sober, and inspire a focus on the overlooked, and,

Whereas Angela has worked to excel and exceed, taking her role as a National Council member to the limits of expectation and beyond, and has carried this enthusiasm to her campus, professional, and personal lives, and,

Whereas Angela has shown great responsibility – fiscally through the procurement of multitudinous free desserts; meteorologically through the management of Hurricanes in the Gulf; and harmoniously through the skillful, silver-screen-inspired serenades, sweetly sung to Dr. Stemler,

Therefore, be it resolved that the National Council wishes to extend its gratitude to Angela Congrove for a job well and uniquely done, and to wish her the best in her adventures in finding home, hearth, and a little Southern Comfort in her study of law in Macon, Georgia; and encourages her to keep in touch with the National Council, or, failing that, just to drop into the National Office for a quick "Hey, y'all!"

KRISTIAN GUZMAN

Whereas, Kris Guzman has served the past three years as a National Council Member-at-Large, the National Council wishes to extend our warm appreciation to Kris for all her hard work, and

Whereas, Kris has chaired and served on numerous Council committees, including Expansion, Chapter Relations, Finance and Long-Range Planning, Nominations and Bylaws, Fellowship Review, and Order of the Torch, and her contributions have been crucial to the success of these committees, and

Whereas, Kris's notorious travel mishaps of lost luggage, cancelled flights, and jet lag have become legendary, and she has handled it with grace and aplomb, and

Whereas, Kris's ability to find great shoes, shawls, and jewelry at almost every ALD event location is marveled at, she, nevertheless, dutifully carries out her ALD responsibilities, and

Whereas, Kris's handling of personal challenges with amazing strength, courage, and faith has been an inspiration to those of us on the board, and



Whereas, Kris's dedication and active role as a local chapter adviser has resulted in membership increase from 222 in 2002 to an incredible 546 members in 2004 she is both applauded and envied by others,

Therefore, be it now resolved that the National Council wishes to express its heartfelt thanks and appreciation for her dedicated service to Alpha Lambda Delta. We look forward to our continued relationship with Kris through her role as chapter adviser at the University of Southern California and in her recruitment efforts on behalf of ALD in Southern California.

COMING SOON TO A NATIONAL COUNCIL NEAR YOU...

MEET YOUR 2004

NEW NATIONAL COUNCIL MEMBERS!



Melinda Koonce began her career at the University of Houston in 1995 within the Department of Campus Activities, working with the Student Program Board, Homecoming, Council of Ethnic Organizations, Activities Funding Board, and many other groups.

She later moved to the University Center Reservations Office in 2000, where she is currently responsible for supervising the University Center & Associated Facilities Reservation Services. One of the most enjoyable aspects of her position is being able to

meet many people from different backgr

She received a B.S. in Hotel and Restaurant Management and a M. Ed. in Higher Education Administration with a in Educational Leadership and Cultural from the University of Houston. She wa in Texas and has a large family.

Melinda has advised the ALD/PES at the University of Houston since 1995. In spare time, you might find Melinda going to the movies, or attending the theatre. She enjoys reading and the outdoors.

*LEFT: NATIONAL COUNCIL MEMBER-AT-LARGE, MELINDA KOONCE
RIGHT: NATIONAL COUNCIL STUDENT MEMBER-AT-LARGE, BRITTANY SHEPPE*

Brittany Lee Sheppe is a Psychology major at the University of South Carolina, and is the newest student member of the Alpha Lambda Delta National Council.

Brittany led the South Carolina chapter as chapter president during the 2003-2004 academic year, and during her tenure in office, the chapter participated in a long list of volunteer and social activities, including Clean Carolina, the Poster Banner Contest, and the USC Challenge, a high school academic competition.

Brittany is active in extracurriculars outside of Alpha Lambda Delta: she volunteers with Colleges Against Cancer, tutors at area elemen-

tary schools, and is a member of two other honor societies and Kappa Delta Epsilon sorority for education students. Additionally, Brittany teaches Sunday School at her church, and spends time instructing fellow students in kickboxing and aerobics at the USC Wellness and Fitness Center.

Brittany is known by attendees of the 2003 National Leadership Workshop for the 2004 Chapter Challenge, encouraging chapters to follow the lead of the University of South Carolina Chapter and donate eighty cents per member to the Perpetual Fellowship Fund – a challenge that has helped collect over \$6,000 in donations to the Fund.



WE WANT YOU!

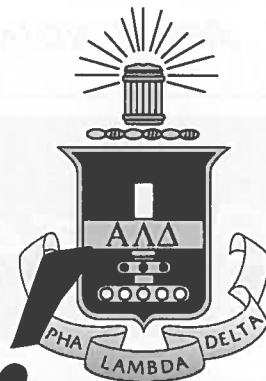
...TO SERVE ON THE ALPHA LAMBDA DELTA NATIONAL COUNCIL

The National Council Nominations Committee is now accepting applications and/or nominations from current chapter advisers for a Council Member-at-Large position for a three-year term. We invite you to apply or nominate another chapter adviser who would make an additional contribution to Alpha Lambda Delta by serving on its governing board. National Council members must be able to attend the annual June council meeting. All expenses are paid for travel relating to Alpha Lambda Delta.

If you are interested in applying, please submit a vita and a statement of your involvement with Alpha Lambda Delta to the National Headquarters on or before May 15, 2005. For more information, please visit our website at: www.nationalald.org.

EXTRA! EXTRA! READ ALL ABOUT IT!

CHAPTER REPORTS!



**EXCITING! INFORMATIVE!
CHAPTERS FROM AROUND THE
NATION SHARE THEIR EXCITEMENT
FOR ALPHA LAMBDA DELTA...**

UNIVERSITY OF CALIFORNIA - LOS ANGELES

By Jonathan Stern

For our ALD/PES Officer Retreat, we thought that we would head to the place made famous by two recent TV shows: the O.C. We rented a beach house in Newport Beach; and the two-day, one-night retreat went great. Our ride down there was absolutely tremendous because we went from UCLA to Newport Beach in about an hour. Now for you Southern California people who know the freeways (namely the 405), you may ask how did we do it? The answer was our



STUDENT MEMBERS FROM UCLA ENJOY A DAY AT THE BEACH

bus driver Don. He provided fast transportation and several laughs along the way. When we got there with our big charter bus, it took Don no time at all to decide how to get us right to our beach house.

"If those cars can get into that tiny street," Don remarked, "then I can do it too."

After settling in, we embarked on meetings and fun for the rest of the stay. We started on the beach with introductions and Frisbee, although Dean Carlisle, our chapter advisor, got a bit too wild, going into the surf and splashing those closest to it. We moved inside and tackled the business at hand; namely what

kinds of academic, community service and social events we wanted to have for the quarter and the year. We came up with many different ideas like miniature golf, volunteering at a convalescent home, helping Teamworks bring 7th and 8th graders from LA schools to experi-

ence a day at UCLA and creating awareness on academic dishonesty (a.k.a. plagiarizing) and its consequences.

By far, the best activity of the retreat was the eight-hour marathon game of Mafia. Mafia is a game where several people are the mafia and try to kill people, while the rest of the group tries to discover and kill the mafia to save their fellow players. With accusations, laughs and 'colorful' words going around, the game was certainly enjoyable. Erika Stageburg was the one that everyone turned to and emerged as Grand Master Strategist, while Ravi Gupta and Joyce Lin became the Most Deadly Mafioso. Poor Lindsay Nicholas, after having been killed off too often, decided to become an observer and recover from post-traumatic death syndrome; our hearts go out to you Lindsay. After ending at 5am, several people who did not want the fun to end trekked down to the beach for more Frisbee, courtesy of Erika's light up disk.

The Officer Retreat was an enjoyable time for us to get together, get business done and have fun. I

Chapter Reports are continued on p. 15

ASTOUNDING!

AMAZING!

OUTSTANDING ADVISER OF THE YEAR

During the 2004 National Leadership Workshop in Kansas City, Dr. James Stemler, National President, had the pleasure of introducing this year's Outstanding Adviser of the Year: George Mason University's Donna Fox, Associate Dean for Student Academic Affairs in the College of Arts and Sciences. Fox has served as chapter adviser at George Mason University in Fairfax, Virginia for two years, and has already made a mark as an outstanding adviser.

According to chapter president, Sanjay Rajpal, Fox "...has made herself accessible far beyond the call of duty." Encouraging in-depth communication between herself and the chapter officers has ensured that the leadership team of the George Mason chapter has solid guidance, and that the officers are always prepared to lead the group.

As an Associate Dean, Fox has a full plate professionally, but has yet to miss an Alpha Lambda Delta meeting on campus, nor has she failed to provide food for meetings, demonstrating not only a dedication to the Society, but also an understanding of the needs of college students.

Fox has brought not only enthusiasm to the Society at George Mason, but also ideas for activities and promotion. Student members under her guidance have engaged in numerous campus activities, including "caught studying" programs and informational kiosks.

During her acceptance speech in Kansas City, Fox thanked the members of Alpha Lambda Delta at George Mason for their support, and expressed her honor at being selected as this year's Adviser of the Year. The crowd could not help being caught up in her enthusiasm and energy, and after concluding her remarks with an inspirational tale of "enjoying the journey," Fox received a standing ovation from the entire delegation.

The National Council of Alpha Lambda Delta would like to take this opportunity once again to thank Donna Fox of George Mason University for all of her work in supporting that chapter and for setting an excellent example for advisers across the nation. Congratulations to Donna Fox, and best wishes from your whole Alpha Lambda Delta family!



2004 NATIONAL ADVISER OF THE YEAR DONNA FOX RECEIVES HER AWARD PLAQUE FROM NATIONAL PRESIDENT JIM STEMLER AT THE NATIONAL LEADERSHIP WORKSHOP IN KANSAS CITY. FOR MORE PHOTOS FROM THE NATIONAL LEADERSHIP WORKSHOP, SEE THE CENTERPAGE SPREAD!

EXECUTIVE DIRECTOR ADVISERS OF THE YEAR

Dr. Glenda Earwood announced five winners of the Executive Director Adviser Awards for 2003-2004. This year's winners were Mary Noll of Montana State University – Bozeman; Dr. Susan Groh of the University of Delaware; Richard Lee of Valdosta State College in Georgia; Virginia Rinella of Southern Illinois University; and Dr. Constance Staley of University of Colorado – Colorado Springs. "Selecting only five advisers from among the many superb Alpha Lambda Delta chapter advisers is a very difficult task, but these five advisers had an exceptional year with their chapters!" said Dr. Earwood.

Since 1988, **Mary Noll** has served as an adviser to the Alpha Lambda Delta chapter at Montana State University - Bozeman.

Ms. Noll has done a remarkable job advising the chapter; almost 50% of the eligible freshmen elected to join the honor society this year. The chapter had an increase of 53% in membership from 103 members in 2003 to 218 members in 2004. But the most outstanding accomplishment of the chapter was having THREE fellowship winners – John Cookson, Ingrid Schultz, and Ellen Schultz. Ms. Noll conscientiously advises ALD members to apply for fellowships and assists by often writing letters of recommendation. After the third MSU – Bozeman received a fellowship, Ms. Noll contacted the university public relations office and the ALD chapter was featured in a story on the university's home page.

Dr. Susan Groh, Assistant Professor

in the Department of Chemistry and Biochemistry is the adviser for the Alpha Lambda Delta chapter at University of Delaware. Last year the chapter received the Bronze Award for membership increase. This year, that number was exceeded and the chapter received the Silver Award. The chapter has been extremely active; the visibility of the chapter encouraged 55% of eligible students to join. Through the efforts of the chapter, the Society has supported Life, Battle of the Bands, Strides for the Future Race and other fund raising events. For South African orphans, the chapter has become well known for its philanthropic efforts. Other community service projects include visiting the Ronald McDonald House, playing Bingo at a nursing home.

(continued on next page)

700,000

AN IMPORTANT MILESTONE FOR THE 80TH ANNIVERSARY OF ALPHA LAMBDA DELTA - THE 700,000TH MEMBER!

Report from the University of Illinois

On April 5, 2004, Catherine A. Knight, Alpha Lambda Delta's Alpha Chapter President for the 2004-2005 academic year was installed by our chapter as the 700,000 Member of Alpha Lambda Delta. She brings to this office a strong commitment to our tutoring program as well as a vision for philanthropies directed at literacy and tutoring in local schools, as well as working with adults learning English as their sec-

ond language. Catherine addressed the group as to the need for commitment to scholarship and the importance of sharing their gifts with others. She encouraged active participation in philanthropies and promised to communicate frequently with members as to their opportunities to participate in the various philanthropies. Catherine is an excellent representation of the caring and committed person associated with the mission of Alpha Lambda Delta.



700,000TH MEMBER OF ALPHA LAMBDA DELTA, CATHERINE KNIGHT, ADDRESSES STUDENTS AT THE UNIVERSITY OF ILLINOIS. AS OF DEC. 31, 2004, ALD HAS OVER 704,000 MEMBERS WORLDWIDE

ED ADVISERS OF THE YEAR (CONT.)

highway cleanup, assisting the local food bank, tutoring at an elementary school, and participation in recycling efforts on campus provide a wide variety of enriching activities for ALD members and make a difference in the University community and beyond.

Richard Lee has served as the Alpha Lambda Delta chapter adviser at Valdosta State University since 1999. His dedication and commitment to the students at Valdosta State is one of the strengths of the chapter. Last year over 125 students decided to join Alpha Lambda Delta at Valdosta confirming the reputation of the honor society for promoting excellence in the academic environment among first year students at Valdosta State University. Richard Lee has done a remarkable job advising the chapter. In addition to promoting academic excellence at Valdosta, the chapter was involved in making a donation to help fly the VSU football team to fly to a major conference game and raised over \$500 in the local

Children's Miracle Network Dance Marathon.

Since 1978, **Virginia Rinella** has served as the chapter adviser at Southern Illinois University, a term of service of over 25 years! Virginia Rinella has conscientiously served as adviser and helped the chapter offer service to the University community as well as to the larger Carbondale area. This year through Virginia's efforts, the chapter sent letters of invitation to the parents which resulted in a 52% increase in new Alpha Lambda Delta members.

Dr. Constance Staley, Director of the Freshman Year Experience at the University of Colorado - Colorado Springs was instrumental in starting a chapter of Alpha Lambda Delta. Dr. Staley helped write the petition for the new chapter and advised the charter group through the installation process. The chapter was installed on Tuesday, March 30, 2004 at the Westin Hotel in Colorado Springs, Colorado. The initiation and installation ceremonies were

attended by the initiates and over 600 family members and friends of the 226 new student members. Dr. Earwood, installing officer, said, "The installation ceremony was one of the largest and most impressive ceremonies I have ever attended."

The role of the chapter adviser is critical to the success of the chapter and the national organization," said Dr. Susan Huffman, Vice President for Chapter Relations and Expansion. "That's why the Chapter Relations Committee recommended the establishment of the Executive Director Adviser Award in 1998 so that more chapter advisers could be recognized for their service and commitment to Alpha Lambda Delta."

These advisers have done exceptional jobs and deserve the recognition of this award. "The National Council is very proud and grateful to these advisers for the outstanding work they do with these chapters", said Dr. James G. Stemler, National President.

2004-2005

GRADUATE FELLOWSHIP RECIPIENTS

IN 2004, ALPHA LAMBDA DELTA HONOR SOCIETY FOR FIRST YEAR STUDENTS

AWARDED A TOTAL OF 23 FELLOWSHIPS, FOURTEEN \$3000 FELLOWSHIPS, EIGHT \$5000 FELLOWSHIPS,

AND THE MARIA LEONARD FELLOWSHIP IN THE AMOUNT OF \$7500.

THESE FELLOWSHIPS ARE AWARDED ANNUALLY FOR ONE YEAR OF GRADUATE STUDY. AN INITIATED MEMBER OF ALPHA LAMBDA DELTA WHO HAS MAINTAINED THE ACADEMIC QUALIFICATIONS FOR MEMBERSHIP IS ELIGIBLE TO APPLY AS A GRADUATING SENIOR OR LATE

**FOR MORE INFORMATION AND TO OBTAIN AN APPLICATION, PLEASE VISIT:
WWW.NATIONALALD.ORG.**



JAMES SARAKATSANNIS

*Maria Leonard \$7500 Graduate Fellowship
Award Recipient*

Undergraduate:
University of Delaware

Graduate:
Columbia University



EMILY BONDUS
*Margaret Cunnin,
Fellowship*

Undergraduate:
Purdue University

Graduate:
Purdue University



TIWANNA DEMOSS
*Adele Stamp
Fellowship*

Undergraduate:
Western Michigan
University

Graduate:
American University



LYNN CAPOBIANCO
*Louise McBee
Fellowship*

Undergraduate:
University of South
Carolina

Graduate:
Auburn University



JOHN CHALLIS
*Katherine Cater
Fellowship*

Undergraduate:
University of
Kentucky

Graduate:
Yale University



**COLLEEN
CHRISINGER**
*Margaret Berry
Fellowship*

Undergraduate:
Willamette Univ.

Graduate:
University of
Wisconsin - Madison



JOHN COOKSON
*Gladys Bell
Fellowship*

Undergraduate:
Montana State Univ. -
Bozeman

Graduate:
Montana State
University - Bozeman



ANGELA CONGR
*Patricia Graham
Fellowship*

Undergraduate:
Otterbein College

Graduate:
Mercer University
School of Law



GWEN S. DAVIS
Graduate Fellowship

Undergraduate:
College of William
and Mary

Graduate:
Harvard Law School



A. CHARLES DEAN
Graduate Fellowship

Undergraduate:
Dickinson College

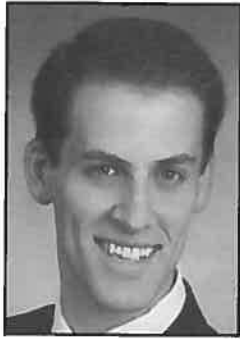
Graduate:
George Mason
University School of
Law



VALERIE ESCHITI
*Miriam Shelden
Fellowship*

Undergraduate:
Indiana State
University

Graduate:
Texas Woman's
University



SCOTT KELLER
*Dorothy Anderson
Fellowship*

Undergraduate:
Purdue University

Graduate:
University of Texas -
Austin School of
Law



CHRISTOPHER KEY
*Lanny Moore
Fellowship*

Undergraduate:
Univ. of Alabama

Graduate:
Univ. of Alabama -
Birmingham Medical
School



ELLEN SCHULTZ
*Alice Crocker Lloyd
Fellowship*

Undergraduate:
Montana State Univ.
- Bozeman

Graduate:
University of
Montana - Missoula



AMANDA SHEARER
*Maude Lee Ethredge
Fellowship*

Undergraduate:
Georgetown College

Graduate:
University of
Kentucky College of
Medicine



BRYAN YUREK
*May Augusta
Brunson Fellowship*

Undergraduate:
St. Vincent College

Graduate:
University of
Pittsburgh School of
Medicine



JASON SANDERS
*Barbara Quilling
Fellowship*

Undergraduate:
University of
Oklahoma

Graduate:
Harvard Medical
School



MEGAN DURR
*Kathryn Sisson
Phillips Fellowship*

Undergraduate:
Purdue University

Graduate:
Johns Hopkins
University School of
Medicine



INGRID SCHULTZ
*Martha Wade
Fellowship*

Undergraduate:
Montana State
University -
Bozeman

Graduate:
Oregon Health and
Sciences University

PAMELA KREEGER
*Gladys Pennington
Fellowship*

Undergraduate:
Valparaiso University

Graduate:
Northwestern
University

**RYAN
BOCKBRADER**
*Christine Conaway
Fellowship*

Undergraduate:
The Ohio State
University

Graduate:
The Ohio State
University

TOBY LONG
*Betty Jo Hudson
Fellowship*

Undergraduate:
Western Michigan
University

Graduate:
Michigan State
University

BENNY NG
*Mary Jane
Stephenson
Fellowship*

Undergraduate:
UCLA

Graduate:
UCLA

Not
pictured:

JO ANNE J. TROW UNDERGRADUATE SCHOLARS

CONGRATULATIONS TO THE 2004-2005 JO ANNE TROW UNDERGRADUATE SCHOLARS! THIS YEAR, THE NATIONAL COUNCIL AWARDED 35 TROW SCHOLARSHIPS OF \$1000 EACH! THE JO ANNE J. TROW AWARD WAS ESTABLISHED IN 1988 TO HONOR A PAST PRESIDENT OF ALPHA LAMBDA DELTA, FORMER VICE PRESIDENT FOR STUDENT SERVICES AT OREGON STATE UNIVERSITY, DR. JO ANNE TROW. DR. TROW SERVED ALPHA LAMBDA DELTA AS DISTRICT VIII ADVISER FROM 1974 TO 1979, NATIONAL SECRETARY FROM 1979 TO 1983, PRESIDENT-ELECT FROM 1984 TO 1985, AND AS NATIONAL PRESIDENT FROM 1985 UNTIL 1988.

APPLICATIONS FOR THE UNDERGRADUATE SCHOLARSHIP WILL BE AVAILABLE FROM ALL CHAPTER ADVISERS IN JANUARY, 2005, AND ARE DUE TO THE NATIONAL OFFICE (VIA YOUR ADVISER) BY MAY 1, 2005.

Winners not pictured:

Morgan Rose Casey
UCLA

John M. Thephasdin
Indiana University

Drew G. Yoder
Ohio University



Meagan Anderson
Morningside College



Jennifer Audia
West Virginia
University



Anthony Baldrige
Piedmont College



Laura Begue
Kent State University



Corrie Bilke
Indiana Univ./Purdue
Univ. at Indianapolis



Tara C. Buckley
University of
Maryland



Tessa Clark
The Ohio State
University



Emily Shannon Day
University of
Oklahoma



Renee Dentlinger
University of Portland



Anne Ellefson
Univ. of South
Carolina - Columbia



Serena Freeman
University of
Oklahoma



Dargan Murrah Gore
University of South
Carolina



Alysa Handelsman
*Northwestern
University*



Meredith Heagney
Ohio University



Amy Hren
*Indiana Univ. / Purdue
Univ. at Indianapolis*



Tom Isherwood
*University of
Delaware*



Ashley Paige Jones
Georgetown College



Lyndsay Long
Auburn University



Rathi M. Martinez
Trinity University



Kyle Morris
*Texas State University
San Marcos*



**Melanie
Ottenbacher**
Univ. of South Dakota



Stephanie Pope
*The Ohio State
University*



Michelle Roberts
Trinity University



Sophia K. Santana
Louisiana College



Steven Schlenk
Purdue University



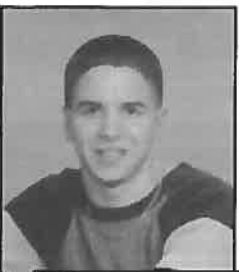
Nathan Schwartz
*Western New England
College*



Candice Sheerer
Long Island University



Ming-Jay Shiao
*University of
Delaware*



Mark Triboletti
Purdue University



Jamie Lynn Wagner
*Indiana State
University*



Alison Young
*University of
Maryland*



Natalie Zeyen
Otterbein College

THE ALPHA LAMBDA DELTA 2004-2005

CHAPTER LIST

- Alabama**
- 1. University of Alabama
- 2. University of Alabama - Birmingham
- 3. University of Alabama - Huntsville
- 4. Auburn University
- 5. Birmingham Southern College
- 6. University of Montevallo
- 7. University of North Alabama
- 8. Samford University
- 9. Troy State University
- Arkansas**
- 10. Arkansas State University
- 11. University of Arkansas - Fort Smith
- Arizona**
- 12. Arizona State University
- 13. Northern Arizona University
- California**
- 14. California State Polytechnic University
- 15. California State University - Long Beach
- 16. University of California - Los Angeles
- 17. University of California - Riverside
- 18. University of California - Santa Barbara
- 19. Dominican University of California
- 20. University of La Verne
- 21. University of the Pacific
- 22. University of Southern California
- Colorado**
- 23. Colorado College
- 24. Colorado State University
- 25. Colorado State University - Pueblo
- 26. University of Colorado - Colorado Springs
- 27. University of Denver
- Connecticut**
- 28. Central Connecticut State University
- 29. University of Connecticut
- 30. University of Hartford
- 31. University of New Haven
- 32. U. S. Coast Guard Academy
- District of Columbia**
- 33. American University
- Delaware**
- 34. University of Delaware
- Florida**
- 35. University of Florida
- 36. University of Miami
- 37. Northwood University
- 38. South University
- 39. Warner Southern College
- Georgia**
- 40. Brenau University
- 41. Georgia Baptist College of Nursing
- 42. Georgia College & State University
- 43. Georgia State University
- 44. University of Georgia
- 45. Piedmont College
- 46. Spelman College
- 47. Georgia Southwestern State University
- 48. Valdosta State University
- 49. Wesleyan College
- 50. State University of West Georgia
- Iowa**
- 51. Coe College
- 52. Drake University
- 53. Iowa State University
- 54. Morningside College
- 55. Simpson College
- 56. William Penn University
- Idaho**
- 57. University of Idaho
- Illinois**
- 58. DePaul University
- 59. Illinois State University
- 60. Illinois Wesleyan University
- 61. University of Illinois
- 62. Judson College
- 63. MacMurray College
- 64. Millikin University
- 65. Monmouth College
- 66. Northwestern University
- 67. Southern Illinois University
- Indiana**
- 68. Anderson University
- 69. Ball State University
- 70. Butler University
- 71. DePauw University
- 72. Franklin College
- 73. Hanover College
- 74. Indiana State University
- 75. Indiana University
- 76. Indiana University - Purdue U at Indianapolis
- 77. Purdue University
- 78. Rose-Hulman Institute of Technology
- 79. Saint Joseph's College
- 80. Valparaiso University
- Kansas**
- 81. Fort Hays State University
- Kentucky**
- 82. Cumberland College
- 83. Georgetown College
- 84. University of Kentucky
- 85. Murray State University
- Louisiana**
- 86. Grambling State University
- 87. Louisiana College
- 88. University of Louisiana - Lafayette
- 89. University of Louisiana - Monroe
- 90. McNeese State University
- 91. Newcomb College of Tulane University
- 92. Nicholls State University
- 93. Northwestern State University
- 94. Louisiana State University
- Massachusetts**
- 95. Fitchburg State College
- 96. Framingham State College
- 97. Massachusetts College of Liberal Arts
- 98. University of Massachusetts - Boston
- 99. University of Massachusetts
- 100. University of Massachusetts at Lowell
- 101. Regis College
- 102. Salem State College
- 103. Western New England College
- Maryland**
- 104. McDaniel College
- 105. Morgan State University
- 106. University of Maryland
- Maine**
- 107. University of Maine
- Michigan**
- 108. Albion College
- 109. Kalamazoo College
- 110. Northern Michigan University
- 111. Western Michigan University
- Minnesota**
- 112. Minnesota State University - Moorhead
- 113. Minnesota State University, Mankato
- 114. University of Minnesota - Crookston
- 115. Winona State University
- Missouri**
- 116. Central Methodist College
- 117. Columbia College
- 118. Lindenwood University
- 119. Maryville University of St. Louis
- 120. University of Missouri - Kansas City
- 121. Stephens College
- 122. William Jewell College
- Mississippi**
- 123. Jackson State University
- 124. Mississippi College
- 125. University of Mississippi
- 126. University of Southern Mississippi
- 127. Tougaloo College
- 128. Mississippi State University
- Montana**
- 129. Montana State University - Bozeman
- 130. University of Montana
- 131. Bennett College
- 132. Choyan College
- 133. Johnson C. Smith University
- 134. Lenoir-Rhyne College
- 135. Meredith College
- 136. North Carolina A&T State University
- 137. University of North Carolina - Greensboro
- 138. Salem College
- 139. Western Carolina University
- North Dakota**
- 140. University of North Dakota
- Nebraska**
- 141. Doane College
- 142. Midland Lutheran College
- 143. University of Nebraska
- 144. University of Nebraska - Omaha
- 145. Wayne State College
- New Jersey**
- 146. Montclair State University
- 147. Ramapo College of New Jersey
- 148. Rider University
- New Mexico**
- 149. Eastern New Mexico University
- New York**
- 150. Alfred University
- 151. Long Island University
- Ohio**
- 152. Ashland University
- 153. Bowling Green State University
- 154. University of Cincinnati
- 155. Cleveland State University
- 156. Heidelberg College
- 157. Kent State University
- 158. Marietta College
- 159. Miami University
- 160. Mount Union College
- 161. Ohio Northern University
- 162. The Ohio State University
- 163. Ohio University
- 164. Otterbein College
- 165. University of Rio Grande
- 166. University of Toledo
- 167. Wittenberg University
- 168. Wright State University
- 169. Youngstown State University
- Oklahoma**
- 170. University of Central Oklahoma
- 171. University of Oklahoma
- 172. University of Science & Arts of Oklahoma
- 173. Oral Roberts University
- 174. Southern Nazarene University
- Oregon**
- 175. Linfield College
- 176. Oregon State University
- 177. University of Oregon
- 178. University of Portland
- 179. Willamette University
- Pennsylvania**
- 180. Bucknell University
- 181. Chestnut Hill College
- 182. Dickinson College
- 183. Elizabethtown College
- 184. Gettysburg College
- 185. Pennsylvania State University - Altoona
- 186. University of Pittsburgh - Bradford
- 187. Saint Vincent College
- 188. University of Scranton
- 189. Temple University
- 190. University of Sciences in Philadelphia
- 191. Washington and Jefferson College
- 192. Seton Hill College
- 193. Susquehanna University
- South Carolina**
- 194. Clemson University
- 195. Columbia College
- 196. Converse College
- 197. University of South Carolina
- 198. Winthrop University
- South Dakota**
- 199. South Dakota State University
- 200. University of South Dakota
- Tennessee**
- 201. Austin Peay State University
- 202. Carson-Newman College
- 203. Cumberland University
- 204. Maryville College
- 205. University of Memphis
- 206. Tennessee Technological University
- 207. University of Tennessee at Chattanooga
- 208. Vanderbilt University
- 209. East Tennessee State University
- Texas**
- 210. Angelo State University
- 211. Baylor University
- 212. University of Houston
- 213. University of the Incarnate Word
- 214. Lamar University
- 215. McMurry University
- 216. University of North Texas
- 217. Sam Houston State University
- 218. Schreiner University
- 219. Southern Methodist University
- 220. Texas A & M - Commerce
- 221. Texas A & M - Kingsville
- 222. Texas Christian University
- 223. Texas Lutheran University
- 224. Texas State University - San Marcos
- 225. Texas Tech University
- 226. Texas Wesleyan University
- 227. University of Texas - Arlington
- 228. University of Texas - Austin
- 229. University of Texas - Pan American
- 230. University of Texas - San Antonio
- 231. Trinity University
- 232. Midwestern State University
- 233. University of Texas - El Paso
- Utah**
- 234. Utah State University
- Virginia**
- 235. George Mason University
- 236. Liberty University
- 237. Longwood College
- 238. Mary Baldwin College
- 239. Radford University
- 240. Roanoke College
- 241. Shenandoah University
- 242. Sweet Briar College
- 243. College of William & Mary
- Vermont**
- 244. Lyndon State College
- Washington**
- 245. Central Washington University
- Wisconsin**
- 246. University of Wisconsin - Eau Claire
- 247. University of Wisconsin - Platteville
- 248. Carthage College
- West Virginia**
- 249. University of Charleston
- 250. West Virginia University
- 251. West Virginia Wesleyan College



highly recommend that new members apply to become officers to be able to join in on shaping the UCLA chapter of ALD/PES and to have fun with great people.

UNIVERSITY OF CALIFORNIA - RIVERSIDE

By Elizabeth Rojas

The moment our current officers were elected, the UC Riverside chapter of Alpha Lambda Delta planned a community service event. We decided to hold a school supplies drive for orphans in Mexico. Just as students were ready to throw their school supplies out after their last final exam, our chapter set up tables

officers to come up with more large scale ideas. In addition to our events, our Community Service chair has great plans to join with other community service clubs at our university and have a massive event. With the support of our Student Life and Leadership organization, we hope to carry out this plan near the end of the school year.

After a long summer, our officers regrouped for a casual dinner to discuss our goals for the upcoming year. During our first event of the school year, "Make a Difference Day," we cleaned a local park and helped plant trees and flowers in an empty lot. This hard labor made our officers eager to go back to our office duties which help to maintain and improve our tutorial service. The UC Riverside chapter adopted this service last school year when our university no longer had the funds for it. It is now our task to continue this popular service to encourage learning among younger generations.

of Alpha Lambda Delta inducted 42 new members in May 2004. Annie Castle was elected as Chapter President for the 2004-2005 school year.

On September 17th, we participated in the Movers and Shakers program, in which ALD members helped the freshmen move into the dorms. This was a fun time to interact with the new students and to promote the club at the same time. On September 28, ALD had a booth at the CWU "Go Bananas Club Day". The idea was to give each student a free banana split as they enter the building. Each club has one topping to give at their booth, so in order for the students to complete the dessert, they must visit each booth. It was a great time to talk with prospective members. Three of our Wildcat ALD members went to nationals in Kansas City. They had a great time, and they also brought back some great ideas to help improve our club even more. We had a mini officer retreat at Campus-U-totem (a local burger eatery) in mid-October. We discussed the events and ideas from nationals, as well as upcoming events. On Halloween, we will participate in "Boo Central" alongside



2004 INITIATES FROM UC-RIVERSIDE

and boxes to collect these items. Along with the Coalition of Students in Support of Orphans, we brought the donations to Mexico and gave them to the children in need. We have so many donations that we did not have enough room for everything in our vehicles. Also, we were lucky enough to get a local church to donate money for our cause.

This first success inspired our

CENTRAL WASHINGTON UNIVERSITY

By Colin Young

Greetings from Wildcat Country! The Central Washington University chapter



AN IDYLIC SETTING FOR MEMBERS FROM THE CWU CHAPTER

AUAP, the Asian Exchange Student Program. This event provides a safe trick-or-treating environment for the local 1st- 5th graders. We will decorate a room, dress up, and pass out lots of candy! The kids love it. CWU ALD is on the prowl for new members, and we're looking forward to a great year!

UNIVERSITY OF CINCINNATI

By J.T. Fetherolf

After a year without an advisor or any chapter leadership, the University of Cincinnati chapter of Alpha Lambda Delta is making a comeback on campus. Under new supervision, the fall initiation class of over 120 students will be inducted on November 3. We have set up a listserv to contact all of our members on campus and already have two events planned before our holiday break. Our chapter will be helping with a food drive and seeing the documentary "About Baghdad" as our service and scholarship/social activities for this quarter. By the end of the year, we hope to have 10 to 15 executive officers and 40 to 50 additional active members.

We plan to hold monthly meetings as well as have a scholarship, community service, and social activity during each quarter. We had two representatives attend the national workshop in Kansas City and look forward to a year of growth and success!

YOUR ACTIVITIES HERE!

Make sure to submit your articles for next year's *Flame* to the National Office before October 31, 2005!

MILESTONES:

2004 CHAPTER ANNIVERSARIES

75 YEARS

University of Mississippi
University of Alabama
University of South Dakota

70 YEARS

University of Denver
University of Texas - Austin

65 YEARS

Albion College
University of Kentucky
University of California - Los Angeles

60 YEARS

The Ohio State University

55 YEARS

University of Miami
University of Florida
University of Science & Arts of Oklahoma
University of North Dakota

50 YEARS

Georgia State University
Trinity University
Valparaiso University

45 YEARS

Kent State University
University of Texas - El Paso
Mississippi College
University of Massachusetts
Otterbein College
University of the Pacific
Miami University
Temple University

40 YEARS

University of Louisiana - Monroe
DePaul University
East Tennessee State University
Northwestern State University
Mississippi State University
Arkansas State University

Southern Nazarene University

University of Houston
University of Louisiana - Lafayette

35 YEARS

Sam Houston State University
University of Wisconsin - Platteville
Anderson University
University of Maine

30 YEARS

University of Toledo

25 YEARS

Pennsylvania State University - Altoona
Brenau University
Millikin University
Texas Wesleyan University
Austin Peay State University

20 YEARS

McNeese State University
Indiana University - Purdue U at Indianapolis
Saint Joseph's College
Columbia College
University of Rio Grande

15 YEARS

Lenoir-Rhyne College
George Mason University

10 YEARS

University of California - Riverside
Saint Vincent College
Long Island University
Ashland University

5 YEARS

Johnson C. Smith University
Warner Southern College
Northwood University
Judson College
Fitchburg State College
University of Massachusetts - Boston

FRAMINGHAM STATE COLLEGE

By Sheena Acosta-Frizzell

This year the FRC Chapter is starting off on a great foot, with the goal to not only touch the lives of our fellow students but become heavily involved in the Framingham Community. After a unanimous decision, the Chapter has decided to participate in several service projects. This year we are collecting can tabs for Shriner's Hospital, which is a national wide program that melts down the metal in order to create medical supplies, like wheelchairs. Also, we plan to volunteer our time in the local "Miracle Kitchen", located in Framingham Center by passing out dinners to community members. Along with these projects we also plan to hold a holiday activity for Whitney Place, a senior citizen home, located in Natick. Lastly, in the spring we are planning to participate in "Make a House a Home", which helps battered women begin their new, independent lives. The Framingham State Chapter wants to be a part of the future generation that helps create a legacy dedicated to helping others - and this year we are doing just that.

GEORGIA COLLEGE AND STATE UNIVERSITY

By Karen Bendersky

The Georgia College & State University ALD chapter members would like to submit the following activities that we're doing this year:

In April 2005, we will be hosting the 1st Annual BALD (an acronym

for our Bobcat Alpha Lambda Delta) Short Film Festival. We will be soliciting short films from university students, staff, and faculty from all over the state of Georgia and hope that other ALD chapters will participate. Films should be 10 minutes or less and in digital format. Cost per submission is \$10.00. Prizes will be given for best overall short, best animated/cartoon short, best bald shot, and funniest short. Submission deadline is February 22, 2005. Contact karen.bendersky@gcsu.edu for more information.

Our chapter is working hard to reach our freshman. One new initiative is speaking to our University's freshman seminar classes. Starting in the Spring 2005 semester, ALD members will visit these classes and offer freshman advice on how to succeed in college, explain how college is different from high school, and answer any questions the new students might have.

Our chapter will also host an Honor Code Day during which we remind students of the University Honor Code and distribute Honor Code literature.

During the Spring 2005 induction, we will be awarding our first book scholarships. Book scholarships (in the form of gift certificates to our campus book store) are awarded to the most active non-officer members of our ALD chapter.

INDIANA UNIVERSITY

By Lauren Galloway

The Indiana University chapter of Alpha Lambda Delta is thrilled to continue traditional activities as well

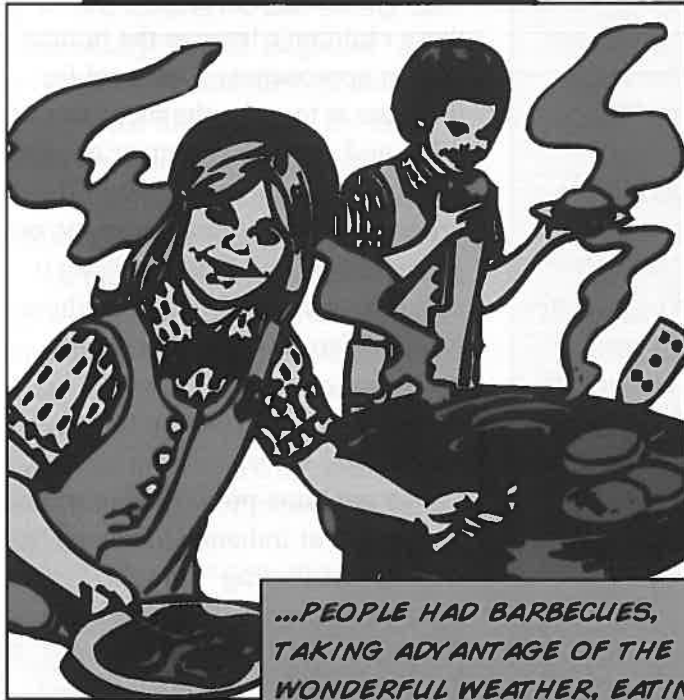
as incorporating new projects into this year's agenda. Our most beloved annual activity is the Adopt-a-Greenspace project. In conjunction with the University Council for Environmental Stewardship and the department of Biology, this project allows ALD members to preserve and beautify a specific area on campus. As a yearly community service project, we also sponsor a canned food drive for the Hoosier Hills Food Bank. We are proud to announce that last year's food drive donated 400 pounds of food (approximately 2000 meals) to the Monroe County community!

In addition to our annual projects, our chapter has created new and exciting ventures that we hope will have a positive impact on our community and campus. The most promising and fulfilling idea for this year is making fleece blankets for the patients at Riley's Children's Hospital. We hope this small gesture will bring joy and warmth into these children's lives as the holiday season approaches. One goal for this year is to unite the members of ALD and provide volunteer opportunities within our community. In order to build this chapter unity, our group has planned an ice cream social/movie night. We hope these types of fun activities encourage participation of new members in ALD and influence them to contribute new ideas.

To continue promoting academic excellence at Indiana University, we will be distributing "Caught Studying" goodie-bags to potential freshman members before finals. As a way to reward our involved and dedicated sophomore ALD members, the chapter awards scholarships

KANSAS CITY...

...A SLEEPY METROPOLIS, NESTLED SNUGLY IN A BEND IN THE RIVER. THE PEOPLE OF THIS HISTORIC CITY WENT ABOUT THEIR BUSINESS CALMLY ON THE MORNING OF OCTOBER 22, NOT KNOWING THAT THE COMING WEEKEND WOULD GO DOWN IN HISTORY...



...PEOPLE HAD BARBECUES, TAKING ADVANTAGE OF THE WONDERFUL WEATHER, EATING THE SMOKED DELIGHTS THAT MADE KC FAMOUS...



...THE CHIEFS PLAYED HOST TO THE ATLANTA FALCONS, AND DECIMATED THE ATLANTA TEAM EASILY...

...BUT ON THOSE TWO DAYS...



...KANSAS CITY WOULD BE CHANGED FOREVER, AS IT BECAME THE HOME TO THE...



ALPHA LAMBDA DELTA

2004 NATIONAL LEADERSHIP WORKSHOP!

at the end of each year. Last year, 13 deserving members each received a \$300 scholarship in recognition of their hard work. In addition to these honors, we would like to congratulate our 2003-2004 chapter president, John Thephasdin, on receiving the Trow Undergraduate Scholarship.

Chili for Charity event. Guests pay \$5 to sample three bowls of chili, with all proceeds going to United Way of Central Indiana. About 150 chili cooks and volunteers, including 11 Alpha Lambda Delta members, helped raise over \$5000 this year.

In November, ALD members collected coats for the annual city-wide Coats for Kids drive. We

advertised through campus email and the school newspaper and set up collection sites at 8 locations across campus. A team of members collected all of the coats and delivered them to Tuchman Cleaners to be cleaned and taken to the Indiana

State Fairgrounds for distribution to needy children in

the Indianapolis area. Members collected over 100 coats on the IUPUI campus.

Every December, ALD members "adopt" a needy local family for the holidays. ALD always requests the largest family available, so we usually end up with a family of at least 8 people. Our members split into teams and spend a Saturday shopping for each family member. Then we have a wrapping party/pizza party that evening, and our gifts and food are delivered to the family just in time for the holidays.

LONG ISLAND UNIVERSITY

By Jacqueline Cordero and Mikeesha Anderson

On Thursday, October 14, 2004 the Brooklyn Campus hosted the Alpha Lambda Delta National Freshmen Honor Society induction ceremony. Students were selected based on their freshman year GPA's. This year 45 students were inducted. They pledged to encourage academic excellence and active participation throughout the LIU/Brooklyn community.

The ceremony was held in the Honors Center and it was officiated by Bernice Braid, ALD Academic Advisor, Cris Gleicher, ALD Administrative Advisor, Leonid Nudelman, 2003-2004 President and Candice Sheerer, 2003-2004 Vice President. The torch was passed from Leonid and Candice to new President Jennifer Shieh and new Vice President Olga Yeshchina.

Ms. Shieh, in her acceptance speech, highlighted the goals which this year's inductees hope to achieve.

"This year I hope to work closely with Alpha Chi, the honor society for juniors and seniors. By collaborating together we can expand our manpower, increase our budget, and explore more innovative ideas. Some of the events we have planned together are the upcoming candy sale and blood drive. Also this year, in lieu of a toy drive we hope to adopt an elementary school, by organizing a drive for much needed, yet often short-handed, school supplies for an under funded school.

By forming a partnership we can ensure greater success with fewer expenses."



IUPUI MEMBERS COOKED UP SOME VERY IN-DEMAND CHILI FOR THE CHILI FOR CHARITY EVENT

IUPUI

INDIANA UNIVERSITY/PURDUE UNIVERSITY AT INDIANAPOLIS

By Lisa Ruch

IUPUI Alpha Lambda Delta members have kept busy this year participating in activities and service events. The chapter began the year by setting up a booth at the annual IUPUI Student Activities Fair in September. We handed out brochures and bookmarks to prospective members and encouraged them to aim for at least a 3.5 grade point average!

In October, we warmed up our crock pots for the annual IUPUI



PRESIDENT AND VICE-PRESIDENT OF THE LONG ISLAND UNIVERSITY CHAPTER TAKE PART IN THE ALD CANDLE RITUAL

Every year certain professors are selected to be inducted as honorary members. This year, professors were selected by the ALD members based on the impact they had on their educational experience. This year the honorees were Syed Ali, Assistant Professor of Sociology, Azzedine Bensalem, Chemistry Professor, Louis Parascandola, Associate Professor of English, and Amy Robinson, Philosophy Professor.

Last year's honorary member, Dr. James Clarke was the keynote speaker for the event. In his speech he stressed the importance of incorporating critical thinking into your leisure time. "Grant yourself the leisure to wonder... to develop your wonder into questions for yourself and for others- and work yourself into a really fantastic state of perplexity." The chapter hopes to heed Dr. Clarke's advice by planning activities that stimulate our curiosity as well as provide outlets for posi-

tive impact on the LIU community. One such activity is the "adopt an elementary school" project. LIU/ALD members hope to provide a local public school with much needed school supplies. Who knows, maybe we can inspire others to "wonder."

UNIVERSITY OF LOUISIANA AT MONROE

By Kamaria J. Wheeler

The University of Louisiana at Monroe is celebrating 40 years with ALD this year! ULM's chapter of Alpha Lambda Delta has tons of upcoming events coming up.

On October 30, members are volunteering at The Boys and Girls Club of West Monroe's Halloween carnival.

In November, ALD has many more activities in store. On the 7th, we'll be teaming up with the SGA and Mortar Board for a brunch. At the gathering, ALD will present an award for most active member to Becky Magee, who was president for the 2003-2004 semesters. Becky has not only been a terrific leader, but has been a prime example of what carrying the torch is all about. We commend her.

Every year, membership just seems to grow and grow and this year is no exception. ALD will be initiating our newest members November 11, 2004.

Later this year, ALD is planning even more community service projects. We plan to do a biannual fundraiser for McRae's later in the year, as well reading to elementary school children.

The faculty advisor, Dr. Harry

Hale, has been with our chapter since 1989 and was elected last year to the National Council of Alpha Lambda Delta. Dr. Hale and our officers have been hard at work to make this the best year ALD has ever had.

UNIVERSITY OF MARYLAND

By Mindy Levine

Our year started off on the right foot when we installed over 600 students in May at our annual induction ceremony.

This past year, Primannum gave out a total of \$9,000 in local scholarships. This sum of money was increased from previous years due to our decision to forgo having a reception following inductions. Instead, we used the money to award more local scholarships. Part of our scholarship money was used to award the winners of the local Helen E. Clarke Scholarship Award. These three recipients include Amy Smith, Kathleen Daly and Julianne Kortz.

Our first winner, Amy Smith is a member of the University's Gemstone Program, a program for the University's brightest students. Our second recipient is Kathleen Daly, a dedicated student to the medical profession at Maryland. Our third and final recipient is Julianne Kortz, finance major in the University's Honors Program. Our two sophomore scholarship recipients included Ali Voung and Tara Buckley who were also selected as National Alpha Lambda Delta Joanne Trow National Scholarship Award Winners.

In addition, we also awarded Colleen Tucci and Annika Richard

with the Jo Anne J. Trow Chapter Scholarship Award for outstanding sophomores.

This past year we were fortunate to award ten new inductees with \$200 scholarships.

Primannum Honor Society prides itself on its outstanding service to the community. This past year in addition to awarding scholarships, we also held many successful service events such as read across America day and a university "snack attack" where we made 8,000 peanut butter and jelly sandwiches. Service events such as these are held monthly throughout the year. We have various drives, such as book and clothing drives that occur in addition to these other service events.

These events would not be possible without the dedication and lead-

ership of our executive board. Elections take place at the end of every year in the spring. The current Primannum President is Kate Daly, and there are a total of 19 other executive board officers serving as well. The Executive board meets every other week to ensure that all aspects of the organization are running smoothly. With the help of this year's executive board we are confident that this upcoming year will be yet another successful one!

UNIVERSITY OF MASSACHUSETTS - BOSTON

By Mimie Laguerre

The University of Massachusetts at Boston is in for a wonderful surprise this semester. At a commuter school such as ours, student involvement in activities outside of the classroom is usually not easy to obtain. This year's Alpha Lambda Delta has made serving our Campus community our primary goal in four specific service areas: Health & AIDS, Tutoring & Mentoring, International Relations, and Cultural Awareness. These four committees, each led by a member of our Executive Committee, will address our purpose of reaching out to the UMass Boston community and developing a greater awareness of ALD to all prospective

members for the upcoming year.

"What's ALD?" may be a small question, but many students from last year's pool of applicants were asking the same thing. Through the implementation of events and service activities that pertain to at least one of our four core areas, as well as through the initiation of an Alpha Lambda Delta Club, ALD will be open to all students on our Campus. The University has never had an ALD like ours and we are determined to awaken our Campus family to our presence and works of service. Near the end of our term, we will host a semi-formal gathering for ALD members, old and new, where we will celebrate our achievements, recognize the dedication of our members, and hopefully award one ALD Club scholarship to a member in need. As UMass Boston's presently reigning ALD members and officers, we diligently seek to accomplish our Chapter's mission to increase student interest and participation.

NEWCOMB COLLEGE OF TULANE UNIVERSITY

By Addie Walker

Ever since the Newcomb College chapter of Alpha Lambda Delta made the decision to become active in Fall 2003 by holding meetings every other week, its enthusiastic members have worked hard to develop and engage in a wide variety of events. The efforts of the 2003-2004 school year were directed primarily towards promoting the existence of the newly reactivated ALD chapter in Newcomb College. T-shirts were



MEMBERS FROM THE UNIVERSITY OF MARYLAND PREPARE PEANUT BUTTER AND JELLY SANDWICHES TO DONATE TO THE NEEDY



designed and sold, and campus mailboxes of freshmen eligible to join ALD were stuffed with lollipops. In April 2004, 92 new members were initiated in the Freeman Auditorium, including the honorary faculty inductee who was selected by the incoming class of initiates, Dr. Gina Dorré of the Women's Studies Program and English Department.

The Fall 2004 semester has been very busy for Newcomb ALD. The first program to go into action was Project Grandpeople. Every week, members visit a local nursing home and spend time with the residents, making crafts and playing bingo. Both members and their "grandpeople" enjoy these Friday afternoons together. ALD as a group participat-

ed in the Paint Rally for New Orleans Public Schools on October 2. For this all-day event, ALD worked alongside teachers and students from Tulane and LSU, scraping, priming and painting classrooms in need of sprucing up at Martin Behrman Elementary School.

Later in October, an Ice Cream Social was held for members as an end-of-midterms study break. The treats were enjoyed by all. In early November, ALD will host a booth at the Newcomb Activities Expo as part of Celebrate



INDUCTEES AT THE NEWCOMB COLLEGE OF TULANE UNIVERSITY TAKE PART IN THE CANDLE LIGHTING CEREMONY

Newcomb Week, a time when the presence and history of Newcomb College at Tulane University are highlighted. At the booth, where

CHAPTER MEMBERSHIP AWARDS

ALPHA LAMBDA DELTA FINISHED THE YEAR WITH OVER 25,000 NEW MEMBERS! THE FOLLOWING CHAPTERS RECEIVED AN AWARD FOR INCREASES IN MEMBERSHIP. A LETTER OF RECOGNITION WAS SENT FROM DR. GLENDA EARWOOD, EXECUTIVE DIRECTOR, TO THE INSTITUTION PRESIDENT AT EACH OF THESE SCHOOLS. THE CHAPTERS ARE RECOGNIZED HERE IN THE FLAME, AND A CERTIFICATE WAS PRESENTED TO THOSE SCHOOLS IN ATTENDANCE AT THE 2004 NATIONAL LEADERSHIP WORKSHOP IN KANSAS CITY, MISSOURI.

GOLD (INCREASE OF 50% OR MORE)

University of New Haven
 Willamette University
 Judson College
 Jackson State University
 Montana State University
 Southern Illinois University
 Chestnut Hill College
 Colorado State University
 West Virginia University
 University of North Dakota
 Cumberland College
 Morgan State University
 Northwood University
 University of Sciences in Philadelphia
 George Mason University
 South Dakota State University
 North Carolina A & T State University
 Indiana State University
 Troy State University
 Otterbein College
 Youngstown State University
 University of Science and Arts of Oklahoma
 Kalamazoo College
 University of Missouri - Kansas City
 California State University - Long Beach
 University of the Pacific
 Converse College
 Columbia College
 Lindenwood University

University of California - Los Angeles
 Midwestern State University
 University of Tennessee at Chattanooga
 Morningside College
 Winthrop University
 Georgia State University

SILVER (INCREASE OF 25% OR MORE)

University of Houston
 Western Carolina University
 University of Alabama
 University of Delaware
 Simpson College
 Eastern New Mexico University
 Salem College
 Roanoke College
 University of Louisiana at Monroe
 Framingham State College
 U.S. Coast Guard Academy
 Drake University
 University of Alabama at Birmingham
 University of Georgia
 University of North Alabama
 Oral Roberts University
 Dickinson College
 University of Mississippi
 Cumberland University
 Sam Houston State University

BRONZE (INCREASE OF 10% OR MORE)

Texas Christian University
 Millikin University
 University of Alabama at Huntsville
 Texas Lutheran College
 Gettysburg College
 Auburn University
 Mary Baldwin College
 Wright State University
 Bucknell University
 Georgia College & State University
 Maryville University of St. Louis
 University of Massachusetts
 Rose-Hulman Institute of Technology
 University of California - Riverside
 Grambling State University
 Arkansas State University
 Birmingham Southern College
 Maryville College
 Indiana University - Purdue University at Indianapolis
 Elizabethtown College
 Vanderbilt University
 Doane College
 University of Oklahoma
 Bowling Green State University
 University of South Dakota
 Massachusetts College of Liberal Arts
 Miami University
 Marietta College
 University of Southern California

ALD will be handing out free pizza, the chapter hopes to catch the attention of freshmen who may become prospective members of ALD. Also in November, ALD will host a Registration Social, where members can help each other decide which classes to take this Spring and share general advice regarding the details of courses. For their final project of the Fall semester, ALD will help with the annual holiday Book-Giving Tree by wrapping and recording on tape dozens of books donated for underprivileged children in New Orleans.

In the Spring semester, the chapter will hold its Initiation Ceremony, where surely many freshmen as dedicated to ALD as its current members will be inducted. Alpha Lambda Delta at Newcomb College has grown in leaps and bounds since last year, and intends to continue to do so for years to come!

NORTH CAROLINA A & T UNIVERSITY

By Corey Caldwell

The Alpha Lambda Delta chapter at North Carolina A&T State University hit the ground running this school year. With a dedicated executive board and committed members, our chapter has participated in numerous community service events and is planning several community activities. Among the ongoing community service activities so far have been our Street Clean-Ups, tutoring elementary school students, and a Lunch Buddies program at a Mendenhall Middle School. During September we went door-to-

door in the campus residence halls conducting a voter registration drive, and we raised a little money with two car wash events. We also helped the campus library staff with the Days of Caring project in which we assisted with the collection of donated items. All the items received were donated to the Greensboro Urban Ministry. In early October some of our members "got down and dirty" when they planted flowers as part of the East Market Street Beautification project. The variety of service projects provides lots of opportunity for all of our members to participate.

Some of the other projects planned by ALD include a Shockwave Campaign (to encourage students to vote) and a panel discussion for the University's "text in community" (Invisible Man by Ralph Ellison). For fun, some of us went out to the "Woods of Terror," a local Halloween attraction, and we're planning an ALD bowling night. And this is all during first semester! The executive board has many other events in the works for the remainder of the school year.

The goal for the year is to be an

active organization on campus. Our chapter wants people to know who ALD is, what we stand for, and realize that if ALD is involved, it is worth participating. Starting at the bottom and working our way up to the top circle of campus organizations, ALD is making a name for itself on campus.

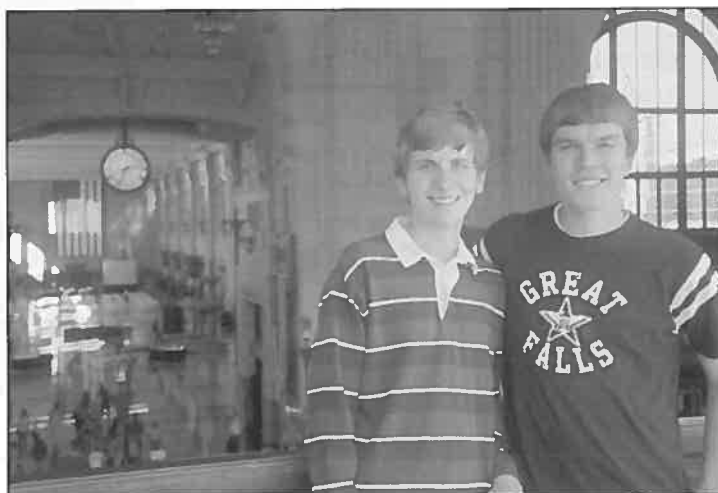
PIEDMONT COLLEGE

By Cynthia Vance

Piedmont College's chapter of ALD was very busy in the Spring inducting thirty-three new members. Shortly after the induction, College President Ray Cleere invited the new inductees and the outgoing members to his newly-renovated home for a cookout and tour of the new building. Also completed in the spring was Piedmont's annual Trivial Pursuit Tournament, hosted by Alpha Lambda Delta. Piedmont ALD's annual Academic Quiz Bowl was also a success, with several high school teams from North Georgia competing for Piedmont scholarships.

The 2004-2005 year will be a

busy one for Piedmont, as the chapter has plans to once again hold its Quiz Bowl and Trivial Pursuit events, as well as events both on and off campus. Plans for a campus-wide movie night fundraiser are underway, where proceeds from snacks sold



*MEMBERS WALLY SMITH AND ANTHONY BALDRIDGE FROM
PIEDMONT COLLEGE TAKE IN THE SIGHTS OF KANSAS CITY*



prior to the movie will go to Piedmont ALD. Also in the works are good luck messages for students before exams, and visits to the Habersham Central Academic Booster Club, a group from a local high school which recognizes academic achievement. Members of the Piedmont chapter plan to visit the club's meetings and be role models so the high school students can learn about college academic honor societies.

Piedmont's chapter of ALD sent three people to the Leadership conference in Kansas City. Attending were Faculty Adviser Dr. Cynthia Vance, President Wally Smith, and Junior Adviser and Trow Scholarship winner Anthony Baldrige. The three attended workshops, did some sightseeing, and dressed up in '20s attire for the banquet. They brought great ideas back from the conference and plan to implement them this year!

PURDUE UNIVERSITY

By Marshall Songer

The Purdue chapter of Alpha Lambda Delta is an exciting place for students to become involved! Overall, there are many activities we are providing to engage our students with academics and community alike. Of those activities, we have included projects such as Boo at the Zoo and Trick or Can, which are local community service projects held in the month of October. We have also participated in a project



PURDUE ALD MEMBERS SELL 9/11 COMMEMORATIVE T-SHIRT AS A PHILANTHROPIC FUNDRAISER

called Red, White, and Blue Purdue, which was a t-shirt fundraiser put on by our university to contribute the United Way Foundation.

Another main program hosted by the local Alpha Lambda Delta chapter, is our Prime Time Tutoring, where members help to tutor a local community of children who are learning English as a second language. It is a young program for our chapter, but it has become very successful.

Currently, we are working to put together our eighth annual Boiler Academic Super Bowl, which is a competition between student groups and organizations on campus to test their trivial knowledge. All proceeds of this event go to benefit the Lafayette Adult Resource Academy, and contribute to buying books to help educate our society.

Lastly, our next fall induction



ALPHA LAMBDA DELTA BOILERMAKERS, IMPROVING THEIR ON-CAMPUS VISIBILITY WITH AN ALD INFORMATIONAL BOOTH

ceremony is also approaching. We will be hosting Dr. Katherine Beardsley from the University of Maryland chapter of Alpha Lambda Delta. Dr. Beardsley will also be presenting an Order of the Torch award to our chapter at that time. We are very much looking forward to her arrival, and it is an exciting time to be an Alpha Lambda Delta Boilermaker!

UNIVERSITY OF SOUTH CAROLINA

By Logan Lockett

The University of South Carolina chapter of Alpha Lambda Delta is proud to uphold not only the finest standards in academic achievement, but also in leadership, civic awareness, and wellness and fitness. Our chapter is the largest honor society on campus and maintains this status by inducting around 500 new freshmen each spring. Members are involved in a variety of

ALD activities and projects, as well as other sports, service, and leadership roles on campus. ALD members are everywhere—from the Homecoming King and Queen to the top awards recipients at Honors Day. In addition, almost forty percent of the officers in the more than 300 undergraduate student organizations at USC are ALD members. We strive to make a difference within our chapter, our campus, our state, and even our nation!

Though our chapter meets several times during the semester, this year we've had two special holiday "themed" meetings: St. Patrick's Day and Halloween. Both meetings combined a lot of information and education with a little bit of partying and good times, to show that honor societies can have it all! During the St. Patty's Day meeting, members all received green beaded necklaces and bright green top hats, setting a fun atmosphere. The members then competed for brand new two-dollar bills or other St. Patrick's Day prizes in a question and answer game based on Alpha Lambda Delta and USC information. These types of games or quizzes often serve as icebreakers at our meetings. At the Halloween Hoot, we posed questions that explored members' knowledge of the U.S. Electoral College and the presidential election process. Prizes consisted of a variety of candy and Halloween hats. Additional prizes were awarded in the night's Halloween costume contest.

ALD has several standing campus and community service projects. We maintain our support of USC's "Clean Carolina" campaign and ALD members regularly pick up litter in our "adopted" area of campus,

the Blossom Street Garage. Members volunteer at three different local hospitals throughout the school year, as well as playing a large part in local Habitat for Humanity efforts. Each spring, the chapter contributes to the Admissions Office through engaging in a Scholars Day student panel along with Carolina Outreach, calling and welcoming newly admitted incoming freshmen several evenings a week. Dance Marathon, a nationally recognized Children's Miracle Network event, is another popular endeavor with ALD members. In the fall, we make spirit banners for home football games and plan and coordinate our largest service project, the USC Challenge. This December will mark the 14th annual presentation of this academic team competition for high school teams from all over the state of South Carolina. Chapter members run the show, from serving as greeters to runners, judges, and scorekeepers. Faculty and staff volunteer as moderators and proceeds from the event go toward USC's academic team's travel fund.

ALD encourages members and others to challenge their bodies as well as their minds. Several ALD members excelled in the USC Octathlon, a fitness challenge involving eight sports in one afternoon, and an ALD member won the Mr. USC body-building event. ALD has entered a record five intramural sports teams this year:

soccer, indoor volleyball, sand volleyball, swimming, and basketball. The chapter's men's swimming team won the campus championship and at press time our women's soccer team is in the playoffs.

In an effort to reach out beyond the local and even state level, our chapter sent a number of delegates to the 2004 ALD National Leadership Workshop: chapter president, Mica Jenkins; vice president, Taylor Alexander; advisor, Harrison Greenlaw; and past president Brittany Sheppe, who currently serves on the ALD National Board.

Moreover, in support of ALD's national theme of Ethics, an exciting new event has been initiated on campus this year. Bridging this concept with USC's Carolina Creed Week, our chapter introduced a political ethics forum. The forum, "Ethics in Political Advertising", was held at a perfect time during the year, one week before the presidential elections. The speakers of the forum included former CNN correspondent and Dean of the USC College of Mass Communication and Information, Charles Bierbauer; C. Blease Graham, Jr., Professor, USC



SOUTH CAROLINA MEMBERS SPORT THEIR HALLOWEEN GARB FOR THEIR OCTOBER MEETING



UNIVERSITY OF SOUTH CAROLINA HOMECOMING KING AND QUEEN - BOTH MEMBERS OF ALPHA LAMBDA DELTA

Department of Political Science and Director of the John C. West Forum on Politics and Policy at USC; and two political staff writers for The State newspaper, Aaron Gould Sheinin and Jennifer Talhelm. The forum provided an educational debate, both fun and enlightening. One ALD member commented, "[The panelists'] strong opinions helped to open my eyes to the importance of having my own voice and vote in this country."

UNIVERSITY OF SOUTHERN CALIFORNIA

By Ashley Romero

Alpha Lambda Delta is in an amazing growth stage at the University of Southern California. At the Spring Induction Ceremony, on April 6, 2004, our chapter initiated 542 new members. Interest in our organization has sky-rocketed! With so many fantastic applicants for executive board positions, we doubled the size of the executive board in order to utilize all the tal-

ents of our new members, and to offer more expertise to all of our members.

We started the new school year by assisting at the Welcome Breakfast for the new freshman class at USC. Soon after classes started USC's Alpha Lambda Delta hosted a Welcome Back Ice

Cream Social. Late in the afternoon on September 6, members of our chapter met in a park on campus and took a break from classes and the Los Angeles heat and enjoyed some tasty ice cream sundaes.

Our chapter has an exciting year ahead. Plans for the 2004-2005 year include outings tailored to individual majors and taking a group of members to work with Habitat for Humanity and local rescue missions. We are most excited, however, about reprising our extremely popular Favorite Professor dinner from last year. Alpha Lambda Deltas are looking forward to a fabulous year! Fight On!

SPELMAN COLLEGE

By Cara Mathews

Thursday August 26th, 2004 was the second day of classes for many

YOUR ACTIVITIES HERE!
Make sure to submit your articles and photographs for next year's *Flame* to the National Office before October 31, 2005!

of the first year students at Spelman College. With little knowledge about the Spelman, classes, professors, and student organizations, the young women of the class of 2008 were in for an exciting event that their ALD Spelman sisters organized especially for them. The annual Ice Cream Social is something that the Alpha Lambda Delta members were thrilled to participate in because of all the exposure, people, fun, and of course...the ice cream! The purpose of the Ice Cream Social is to promote academic excellence among the new students on campus, create visibility, distribute ALD literature and build relationships with our Spelman sisters. The only thing that could be better, on that hot August day in Georgia, than the FREE ice cream were the yummy gummy bears and Oreo crumbs that we got to put on our sundaes.

As members of Alpha Lambda Delta, we feel obligated to provide as much assistance as possible to aid in the academic success of the students on campus, while promoting intelligent living. The members of Alpha Lambda Delta at Spelman College provided clarification about ALD and were able to receive feedback about what was expected of us this year. This ice cream social was a great success because we had the opportunity to speak with older members of Alpha Lambda Delta and to reach out to potential future members.

WEST VIRGINIA UNIVERSITY

By Ashley Kessler

Only in our second year as an

organization, the West Virginia University chapter of Alpha Lambda Delta is on the right foot in establishing ourselves as an organization that is willing to get involved with the community and promote academic excellence.

The year started off with a picnic for old and new members to get to know each other and brainstorm ideas for the upcoming year. We then jumped right into our first big activity of the year by holding our second annual Quiz Bowl. This all-day competition involves high school students from around the state competing with a series of challenging questions. The competition provides a great opportunity for schools all over the state to hear about ALD and it's a terrific way to meet and mingle with potentially future Alpha Lambda Delta members. It was a great success!

In the upcoming months, ALD members have many community service projects planned. We will continue our work with Big Brothers/Big Sisters and children's hospital as well as collections for the local cancer center. We look forward to an exciting year as we keep growing as an organization.

WILLIAM JEWELL COLLEGE

By Diana Hilton

Campus activities were in surplus during Parents and Grandparents Weekend, with perhaps the most "uncommon" event being Faculty Follies, held on Saturday night in Gano.

Subtitled "Perspectives on the Uncommon Professor," Faculty

Follies was designed to entertain and raise funds for the Andrew Drumm Institute. Alpha Lambda Delta, the honor society for first-year students at William Jewell College, organized the show, purporting that it would not be "your ordinary beauty pageant." Sophomore attendee Emily Ray believed that this particular slogan satisfied its claim.

The pageant contestants included Kevin Shaffstall, associate director of Pryor Leadership and chairman of the leadership studies program, Tim Everly, senior assistant dean of admission, Dr. Pat Schoenrade, professor of psychology, Linda Chappell, physical education instructor and spirit team coordinator, Dr. Dan Heruth, professor and chairman of biology, Andrew Sallee, advancement data management coordinator and Dr. Calvin Permenter, professor of music.

The show itself, emceed by Ian Coleman, professor and chairman of the department of music and Megan Simmons, 2002 Alpha Lambda Delta member, consisted of several sections including "Talent," "Informal Wear" and "Interviews." Ray said, "It was really funny to see the faculty making fools of themselves. I think there should have been more contestants."

Dr. Permenter took home top honors which some believe were secured during the talent portion where he danced with ostentatiously-outfitted Alpha Delta Pi sorority women and sang "New York, New York."

Between pageant scenes, the true focus of the night was reiterated in "Pause for the Cause" segments. Although there was not an obligatory entrance fee, Darin Smith, 2003-

2004 president of Alpha Lambda Delta, said that "approximately \$1300 was raised" from this event. The money will go directly to the privately funded Drumm Institute, which provides continuing care for disadvantaged boys and girls by providing a secure family-type habitat through relationships with "professionally trained house parent couples." Smith said that Alpha Lambda Delta chose to support the Andrew Drumm Institute in particular because their educational aims coincide with the purpose of the society, which is "totally for education."

Students who were unable to attend Faculty Follies last weekend should note that Alpha Lambda Delta intends to sponsor this event each year.

COLLEGE OF WILLIAM AND MARY

From Chapter Reports

The College of William & Mary chapter of Alpha Lambda Delta is experiencing one of the most exciting and successful years in chapter history. Not ones to be satisfied with minor success, the current officers have set very lofty goals for the chapter and intend to see them through.

Due to an increased desire among members to get involved in the society, chapter-wide meetings were held for the first time this year, and committees were founded in order to allow members more direct involvement in setting the agenda for the year.

Philanthropy, social, and scholarship committees were established



early in the fall and more will be developed over the coming year.

As in years past, members will be holding a food drive, sponsoring several Angel Tree children, participating in a book drive, volunteering as tutors for other undergraduate students, and having a wonderful induction ceremony in April for all of the great new members.

However, due to their commitment to making Alpha Lambda Delta an increasingly active organization, chapter officers decided to try multiple new philanthropies and social events this year. We are currently working on a formal dance with all of the proceeds going to the Victory Junction Gang camp for disabled children, as well as a baseball-themed movie night and raffle with the proceeds going to ALS research.

Members will also be participating in the campus-wide Relay for Life to raise money for the American Cancer Society, and Up Til Dawn, which raises money for St. Jude's Children's Research Hospital. The goal is to raise at least several thousand dollars for these various charities by the end of the academic year. Officers have also spent the year working diligently in an attempt to bring the Let's Get Ready SAT and college application preparatory program to the College of William & Mary for local underprivileged high school students. In terms of scholarship, we hope to bring at least one well-known speaker to campus as well as hosting a career workshop. The graduating senior with the highest GPA is awarded "The Book Award" along with a \$250 cash prize. At the end of the year, members will submit nominations for "The Best Teacher on

Campus," which will then be voted on by everyone in the society. This is the first year we have done this, and the chosen professor will be awarded a plaque at a special ceremony. Also, we will be setting up a chapter book group for any interested members to read a specific book and discuss it as a group at the end of the semester. Socially, we will have activities such as a chapter-wide dinner before finals as well as a Baskin Robbins night. Many of our social activities will be combined with philanthropy events, such as a formal and possibly a craft making hour. By the end of the year, our chapter will also have its very own website for the first time as well as a page dedicated to it in the college's yearbook.

Alpha Lambda Delta at the College of William and Mary is very excited about this year and the many promising years to come. Congratulations to all of our new members and here's to an even more successful 2005-2006 year!

WILLIAM PENN UNIVERSITY

By Diane Ottoson

Alpha Lambda Delta members are now enjoying their first year of chapter activity on the William Penn campus, and planning is underway for service activities and fun(d)-raising. Chapter officers Carson and Smith, along with advisor Myhlhousen-Leak, attended the National Leadership Conference in Kansas City in October, returning with ideas and enthusiasm that will help ensure a memorable charter year.

UNIVERSITY OF WISCONSIN - EAU CLAIRE

By Paula Stuetzgen

The University of Wisconsin - Eau Claire chapter of Alpha Lambda Delta plans all service and social events in cooperation with the Phi Eta Sigma Chapter. They jointly hold monthly meetings and 40-50 very active core members from among the 167 initiated last spring. Service events have included pumpkin decorating for area nursing homes and hospital wings, letter-writing teams for St. Jude's Children's Hospital fundraising, and (pictured above) raking leaves for the elderly as part of UW-Eau Claire's annual Tidy Up The Town program. During Tidy Up The Town, the ALD/PES team worked at four houses, completing the work in less than four hours! Now, that's raking!

Service is the cornerstone of the UW-Eau Claire ALD chapter, but their recognition of senior members through national certificates and local recognition at our initiation ceremony and banquet is also very important to membership. And, local undergraduate scholarships have been granted to more than 20 members over the past four years. A proud tradition at UW-Eau Claire, Alpha Lambda Delta is a chapter that works - in more ways than one!



INTRODUCING FOR THE FIRST TIME...

NEW CHAPTERS!

PLEASE JOIN US IN WELCOMING THESE NEW MEMBERS OF THE ALPHA LAMBDA DELTA FAMILY!

**UNIVERSITY OF COLORADO -
COLORADO SPRINGS**
March 30, 2004
Colorado Springs, Colorado
By Glenda Earwood

The installation of the Alpha Lambda Delta chapter at University of Colorado at Colorado Springs was held on Tuesday, March 30, 2004 at 7:30 p.m. at the Westin Hotel in Colorado Springs, Colorado. The initiation and installation ceremonies were attended by the initiates and over 600 family members and friends of the 226 new student members. Dr. Constance Staley, Director of the Freshman Year Experience was instrumental in advising the charter group and serves as the Faculty Adviser. Dr. James Henderson, Vice Chancellor of Student Success served as administrative adviser for the ceremony.

Before the installation ceremony, the installing officer, Dr. Glenda Earwood, the new chapter advisers, and the new chapter officers rehearsed the ceremony.



INSTALLATION FESTIVITIES AT UCCS INCLUDED AN ALPHA LAMBDA DELTA CAKE

While the new initiates and their guests gathered, Martin Bromley, a nursing major and new initiate, played the piano. The ceremony began with the co-vice presidents, Britain Weise and Kelliann Rita welcoming the initiates and guests and the introduction of the platform party. Dr. Earwood began the initiation ceremony and was assisted by Dr. Staley and Dr. Henderson. The students rose to repeat the Alpha Lambda Delta pledge. After Dr. Earwood called each initiate's name, each person signed the chapter roll, received his or her certificate from Adviser Staley and jewelry from Dr. Henderson.

After the induction of the student members, the five honorary members were inducted. Honorary Members were Dr. Constance Staley, Dr. James Henderson, Robert Wonnet, Dr. Rogers Redding, and April Speake.

Following the initiation of the charter members by Dr. Earwood, the chapter officers were installed. President - Philip Willbum, Co-Vice President - Britain

Weise, Co-Vice President - Kelliann Rita, Secretary - Crystal Debroisse, Treasurer - Jessica Lundie, Editor - Marisol Cruz.

After the officers' installation, Dr. Earwood announced that it was her pleasure to install the new Alpha Lambda Delta chapter on behalf of the National Council. Upon presentation of the national charter to the chapter by Dr. Earwood, chapter president Philip Willbum accepted the charter and made remarks. Philip Willbum expressed his pride in having the validation of an honor society like Alpha Lambda Delta. He thanked those who had been instrumental in bringing the society to the campus and challenged the initiates to carry on the mission of the society.

The ceremony closed with the singing of the alma mater by Dr. Paul Ballantyne, Professor of Economics. After the ceremony ended, several pictures of the new initiates were taken. Congratulations to each member was extended by the University community and Dr. Earwood.

**THE UNIVERSITY OF TEXAS AT
ARLINGTON**
April 13, 2004
Arlington, TX
By Melinda Koonce

The installation ceremony of the Alpha Lambda Delta Chapter at The University of Texas at Arlington (UTA) took place Tuesday, April 13, 2004 at 7:00 a.m. in the Bluebonnet Ballroom of the E.H. Hereford University Center (UC). The installing officers for National Alpha Lambda Delta were Board Member-at-Large Melinda and Sue Henson, former Editor of The Flame. Eleven honorary members and 97 students were initiated into the charter group.

The 11 honorary members included: Dr. Austin Lane, Dean of Students (Administrative Advisor); Dr. Dawn Remmers, Director, Student Success Programs (Administrative Advisor); Dr.

Victoria Farrar-Myers, Associate Professor, Political Science (Faculty Advisor); President James D. Spaniolo; Dr. Kent L. Gardner, Vice President for Student Affairs; Dr. Dana Dunn, Provost and Vice President for Academic Affairs; Mrs. Patricia O'Neill, Assistant to the Vice President, Student Affairs; Dr. Robert McMahon, Dean, Honors College; Ms. Tami Tucker, Coordinator for Student Judicial Affairs; Mr. Fred Henry, Assistant Dean of Students and Director of Multicultural Services; and Mrs. Janice Giles, Administrative Secretary, Office of the Dean of Students.

The initiation and installation ceremonies were held as part of UTA's Academic Success Week. Since the ceremonies were scheduled so early Tuesday morning, the installing officers arrived on campus the day before, Monday, and met with the local chapter ALD Officers and Advisors over lunch and discussed the group's beginnings and a few of the successful events held so far by the group. UTA's Ambassadors then took the installing officers on a campus tour. The campus is beautiful, with plenty of trees and green walking spaces throughout. The installing officers, numerous students, and several staff members then attended the very prestigious Investiture Ceremony for UTA's new President, James D. Spaniolo, and Convocation for Academic Excellence in the Texas Hall where students were recognized for outstanding work and scholarship in various academic fields. Later that night 6-8 p.m., the installing officers met with the Chapter Officers and Advisors for dinner and a rehearsal in the UC.

The early morning initiation and installation ceremonies on Tuesday were attended by approximately 50 faculty, staff, family, and friends and 75 inductees. Before the installation ceremony, the installing officers, Melinda Koonce and Sue Henson, the new chapter Advisors, new initiates, and honorary members lined up outside the room. The Processional then marched into the ballroom. The initiates sat in several rows in front of the initiation tables. After taking the Alpha Lambda Delta pledge, each person's name was called. Each initiate signed the chapter roll, received his or her certificate and jewelry and shook hands with the Advisors, Dr. Austin Lane, Dr. Dawn Remmers, Dr. Victoria Farrar-Myers, and several of the Officers.

The Honorary Initiates were then induct-

ed followed by the installation of the Chapter Officers. Ms. Koonce and Ms. Henson then installed The University of Texas at Arlington Chapter of Alpha Lambda Delta and presented the student President, Tracy Fulmer, with the Charter. Ms. Koonce and Ms. Henson congratulated the students on their achievements and encouraged them to stay active, motivated, and involved both on campus and in Alpha Lambda Delta. Then President Fulmer gave her acceptance speech, recognizing the contributions of her fellow Officers, Honorary Initiates, and Chapter Advisors. Closing remarks were then given by the Provost, Dr. Dunn and Vice President of Student Affairs, Dr. Gardner. Dean of Students, Dr. Austin Lane, gave final comments and extended a big "Thank You" to National Alpha Lambda Delta for installing their chapter as a new member of the national honor society.

After the ceremony ended, official and informal group pictures were taken. The initiates and their guests shared a delicious

breakfast buffet. Everyone was quite excited about having Alpha Lambda Delta on the campus, especially the Officers: Tracy Fulmer, Timothy Sung, Tiffany Tezino, Kacie Landrum, Krystle Cooper, Brandi Scaggs, and Jennifer Smith. They all did a wonderful job bringing this ceremony together.

WASHINGTON AND JEFFERSON UNIVERSITY

April 24, 2004

Washington, Pennsylvania

By Dorothy Anderson

103 students were inducted as charter members of the Washington & Jefferson College Chapter. In addition to the new members, approximately two hundred guests attended the ceremony. The event proved so popular for parents, grandparents and siblings of the inductees that it was necessary to move in additional chairs prior to the start of the ceremony.

IT COULD BE WORSE...

BY STEVE EDWARDS



“Well, it looks like the ol’ ALD President ‘tossed’ the torch, rather than ‘passing’ it...”

Steve Edwards is chapter adviser at the University of North Dakota. His cartoon, “It Could Be Worse” appears in the Grand Forks (ND) *Herald* twice weekly and in the *Leader*, a publication of the local Air Force base. The cartoon is also carried by the *UND Alumni Review*. He prepared this cartoon specially for this issue of the *Flame*.

The ceremony was held in the Allen Ballroom of the Rossin Campus Center, and was followed by a reception in that same location. The Installing Officers met with the Chapter Officers prior to having dinner with the officers and the Faculty Advisor. We then returned to campus to complete setting up and held a brief rehearsal.

The installing officers enjoyed the opportunity to meet with the current officers to share ideas and learn of the projects being planned related to orientation and a service fair. Angela Congrove was especially helpful in sharing ideas from her point of view as an undergraduate and member of the National Council.

Of special note is that fact that administrators at W & J wanted to establish an ALD Chapter for many years. Ms. Catherine Sherman, Associate Director of the Center for Learning and Teaching, has been the organizing force in achieving this goal for W & J. She offers special thanks to the current officers who have been instrumental in the organizing efforts.

Since all but two of the officers installed at the ceremony are juniors, the words installing them were altered as follows: "You are now installed as the Executive Council of Alpha Lambda Delta (deleting "for the coming year"). Your work has brought about this installation and will ensure a strong chapter." The Installing Officers recommended that new elections be held in the first semester next school year in order to meet the constitutional expectation of sophomores holding the offices, with members of this executive group becoming junior/senior advisors.

The Washington and Jefferson College Chapter is in good hands and should prove to be a source of pride for the college going into the future.

MONTCLAIR STATE UNIVERSITY

April 28, 2004

Upper Montclair, New Jersey

By Lee Greenway

The installation of the Alpha Lambda Delta chapter at Montclair State University was held on Wednesday, April 28, 2004 at 7:00 p.m. The initiation and installation cere-

monies, which took place in the school's Student Center, were attended by the initiates and almost 50 family members and friends of the 63 new student members. Ms. Laura Ryblewski, First Year Counselor, was instrumental in advising the charter group and serves as the Administrative Adviser. Dr. David K. Nichols, Director of the Honors Program, stepped in for Dr. Dorothy Rogers, Faculty Adviser, who was absent due to a maternity leave.

Before the installation ceremony, the installing officer, Lee Greenway, the new chapter advisers and the new chapter officers rehearsed the ceremony. The initiates were organized and proceeded to seats at the front of the room, while family and friends took places at tables arranged in the rear. The ceremony began with the Administrative Adviser welcoming the initiates and guests and the introduction of the platform party. Mr. Greenway began the initiation ceremony, assisted by Ms. Ryblewski and Dr. Nichols. The students rose to repeat the Alpha Lambda Delta pledge, and were then called forward individually by Mr. Greenway to receive their certificate, pin, candle, and congratulations from the platform, and to sign the chapter book.

After the induction of the student members, the five honorary members were inducted. A summary of their accomplishments was read to the audience by Mr. Greenway.

Honorary Members were Dr. Susan Cole, Dr. Karen Pennington, Dr. Richard Lynde, Dr. Dorothy Rogers, Dr. David Nichols, Ms. Melissa Merced, and Ms. Laura Ryblewski.

Following the initiation of the charter



INSTALLATION CEREMONY AT WASHINGTON AND JEFFERSON UNIVERSITY

members by Mr. Greenway, the chapter officers were installed: President – Constantino Lambroussis, Vice President – Alison E. Roman, Secretary – Elizabeth Frank, Treasurer – Crissy Santos, Editor – Kelly Rice, Historian – Marissa Walvick.

After the officers' installation, Montclair State University's Provost, Dr. Richard Lynde, gave a few short remarks, commenting on the rarity in higher education of being allowed the privilege of addressing so many of an institution's shining first-year students in one place and at one time.

Mr. Greenway then expressed his pleasure to install the new Alpha Lambda Delta chapter on behalf of the National Council. Upon presentation of the national charter to the chapter by Mr. Greenway, chapter president Constantino Lambroussis accepted the charter and made remarks. Mr. Lambroussis spoke of his gratitude towards the chapter members, officers, and advisers for their role in the creation of this new chapter.

The ceremony concluded with the Alpha Lambda Delta candle ceremony, in which Mr. Greenway lit a candle from the red, gold, and white candles which had burned throughout the ceremony. He then used his candle to light those of the advisers, who then passed their flames on to the officers. The officers carried their candles to the membership, who in turn lit each other's candles – a touching representation of the Society's motto – "We shall pass our torches on, one to the other." As all candles were lit, the members, officers, and advisers were led out of the room by Mr. Greenway.

A few moments later, the members rejoined their guests in the Student Center dining room for a reception, with members of the school's faculty and administration in attendance.

WILLIAM PENN UNIVERSITY

May 4, 2004

Oskaloosa, Iowa

By Glenda Earwood

The installation of the Alpha Lambda Delta chapter at William Penn University in Oskaloosa, Iowa was held on Tuesday, May 4, 2004 at 6:00 p.m. in the Student Union building on the William Penn University campus. Displayed at the table where the initiates and their guests registered were several letters of congratulations from members of the National Council and from other



INITIATES, HONORARY MEMBERS, AND THE ADVISING TEAM FOR THE NEW CHAPTER AT WILLIAM PENN UNIVERSITY

Alpha Lambda Delta chapters. Prior to the installation and initiation ceremony, the initiates and their family and friends shared a buffet dinner of cordon bleu chicken followed with a fine dessert of cheesecake. Georgetta Mylhousen-Leak was instrumental in advising the charter group and serves as the Faculty Adviser. Dr. L. Frederick Allen, Dean of Academic Affairs served as administrative adviser for the ceremony.

Before the installation ceremony, the installing officer, Dr. Glenda Earwood rehearsed the ceremony with the two advisers. Jodi Carson, chapter president, welcomed the initiates and their guests. Stacy Speas, chapter secretary, gave the invocation. While the new initiates and their guests gathered and during the dinner, the brother of Jason Van Wyk, and son of Sue Van Wyk, staff mentor, played the keyboard.

After the dinner, Dr. Earwood and the two advisers left the room to don their academic regalia. Dr. Earwood began the initiation ceremony by stating that this was her first trip to Iowa and how pleased she was to be here for this event. The students rose to repeat the Alpha Lambda Delta pledge which was printed on a lovely red paper overlaid with a see through cover with the Alpha Lambda Delta crest. After Dr.

Earwood called their name, each new initiate signed the chapter roll, received his or her certificate from Adviser Georgetta Mylhousen-Leak and jewelry from Dr. Allen.

After the induction of the student members, the three honorary members were initiated. Dr. Earwood talked about the academic accomplishments of Dr. Allen who received his Ph. D. in chemistry from Boston University. Dr. Allen serves as the Dean of the College. Dr. Earwood also iterated the academic accomplishments of Georgetta Mylhousen-Leak who is a doctoral candidate in educational psychology at the University of Iowa. She has been at William Penn, where she received her undergraduate degree, as Assistant Professor since 1999. The final honorary member was the future President of William Penn University Dr. Richard Sours, formerly of Ferrum College.

Following the initiation of the charter members by Dr. Earwood, the chapter officers were installed: President - Jodi M. Carson, Vice President - Aaron Allspach, Secretary - Staci Speas, Treasurer - Archie M. Hoggan, Historian - Kaylee Kramer, Junior Adviser - James Smith, and Editor - James Robert

After the officers' installation, Dr. Earwood installed the new Alpha Lambda

Delta chapter on behalf of the National Council. Upon presentation of the national charter to the chapter by Dr. Earwood, chapter president Jodi Carson accepted the charter and made remarks. Jodi talked about how a person can never understand the difference he or she might make on the life of another person. She told the story of two people from Chicago whose lives had a major impact on others.

The ceremony closed with the singing of the alma mater led by Jason Van Wyk and Kaylee Kramer. After the ceremony ended, several pictures of the new initiates were taken. Congratulations to each member were extended by the University community and Dr. Earwood.

CHOWAN COLLEGE
September 26, 2004
Murfreesboro, North Carolina
By Brittany Sheppe

The installation of the Alpha Lambda Delta chapter at Chowan College was held on Sunday, September 26, 2004 at 2:00 p.m. in the Robert Marks Hall in Murfreesboro, North Carolina. Thirty students and five honorary members were inducted in the charter group. The honorary members included Chowan College President, Christopher White; Vice President and Dean for Academic Affairs, Danny Moore; Vice President for Student Affairs, Randy Harrell; Faculty Advisor, Deborah DeMarey; and Administrative Advisor, Gladys DeJesus.

Before the installation ceremony, the installing officers, Marva Watlington and Brittany Sheppe, the new chapter advisors, and new initiates and honorary members lined up outside the auditorium where official pictures were taken. At the conclusion of pictures, everyone lined up and proceeded into the auditorium to a piano prelude. The initiates sat in the first few rows in front of the initiation table. Once everyone was inside, Dr. Gladys DeJesus gave an invocation. Then the Vice President and Dean for Academic Affairs, Danny Moore, gave a welcome speech. Following the speech, Gregory Parker and Lori Parker sang a duet, "Be Thou My Vision." The initiates took the Alpha Lambda Delta Pledge, which was followed by the announcement of each new initiate's name. Each initiate then signed the chapter roll, received his or



NATIONAL COUNCIL REPRESENTATIVES MARYA WATLINGTON AND BRITTANY SHEPPE WITH AN OFFICER AND ADVISER FROM CHOWAN COLLEGE

her certificate and jewelry, and shook hands with Chowan's College President, Christopher White and Vice President and Dean for Academic Affairs, Danny Moore. After the induction of the student members, five honorary members were inducted. A summary of their accomplishments was then read by the student officers.

Following the initiation of the charter members by Marva Watlington and Brittany Sheppe, the chapter officers were installed. The officers installed included: President, Forrest Olgers; Vice President, Maegan Barry; Treasurer, Amy Nichols; and Secretary /Historian, Courtney Morris.

Following the installation of the officers, Brittany Sheppe presented the charter, which was immediately followed by an acceptance speech from the chapter president, Forrest Olgers.

The Installation was followed by a reception of cookies and punch with the new initiates and their guests, in the hallway outside of the auditorium.

DOMINICAN UNIVERSITY
October 29, 2004
San Rafael, California
By Kristian Guzman

The installation of the Alpha Lambda Delta chapter at Dominican University of California at San Rafael was held on Friday, October 29, 2004 at 3:30 p.m. at the

Guzman Lecture Hall in San Rafael, California. The initiation and installation ceremonies were attended by the initiates and over 100 family members and friends of the 41 new student members. Maria McKinney, Director of the First Year Program was instrumental in advising the charter group and serves as the Administrative Adviser. Amy Whiteley, Reference & Instructional Librarian served as Faculty Adviser for the ceremony.

Before the installation ceremony, the

installing officer, Kristian Guzman, the new chapter advisers, and the new chapter officers rehearsed the ceremony. The new initiates sat in assigned seats in alphabetical order in the front of the room while the parents and guests sat behind the new initiates. While the new initiates and their guests gathered, music played in the background. The ceremony began with the Ms. Guzman welcoming the initiates and guests and the introduction of the platform party. Ms. Guzman began the initiation ceremony and was assisted by Maria McKinney and Amy Whiteley. The students rose to repeat the Alpha Lambda Delta pledge. After Ms. Guzman called each initiate's name, each person signed the chapter roll, received his or her certificate from Adviser Maria McKinney and received his or her jewelry from Amy Whiteley.

After the induction of the student members, the 15 honorary members were inducted. A summary of their accomplishments was read by Ms. Guzman to the audience.

The Honorary Members included Dr. David Behrs, Sister Patricia Dougherty, O.P., Dr. Joseph R. Fink, Dr. Jayati Ghosh, Dr. Sibdas Ghosh, Dr. John F. Kennedy, Dr. Luanne Linnard-Palmer, Fr. Alfred A. Lopez, O.P., Dr. Gail Matthews, Dr. Kenneth Porada, Dr. Harlan Stelmach, Dr. Sherry Volk, Amy Whiteley, and Maria McKinney (initiated April 12, 1959).



STUDENTS AT DOMINICAN UNIVERSITY PASS ON THEIR TORCHES AS PART OF THE CANDLE-LIGHTING CEREMONY DURING THEIR CHAPTER INSTALLATION

Photograph by Benedict Caparoso

Following the initiation of the charter members by Ms. Guzman, the chapter officers were installed. The 2004-2005 chapter officers are: President Gurleen Sidhu, Vice President Jeremy Bacani Vitug, Secretary Jenna Lee Fussell, Treasurer Ashley Lynn McClellan, Historian Daniele Zimmerman, and Editor Elizabeth M. Williamson.

After the officers installation, Ms. Guzman announced that it was her pleasure to install the new Alpha Lambda Delta chapter on behalf of the National Council. Upon presentation of the national charter to the chapter by Ms. Guzman Chapter President Gurleen Sidhu accepted the charter and made remarks. Gurleen expressed her pride in having the validation of an honor society like Alpha Lambda Delta. She thanked those who had been instrumental in bringing the society to the campus and challenged the initiates to carry on the mission of the society. The ceremony closed with the singing of the alma mater by Dominican Chamber Singers. After the ceremony ended, several pictures of the new initiates were taken. Congratulations to each member was extended by the University community and Ms. Guzman.

**NORTHERN MICHIGAN UNIVERSITY
October 30, 2004**

Marquette, Michigan

By Susan Huffman

The installation of the Alpha Lambda Delta Chapter at Northern Michigan University in Marquette, Michigan was held on Saturday, October 30, 2004 at 9:30 AM in the Great Lakes Rooms of the campus University Center. The ceremony and brunch was scheduled for Parents' weekend to maximize the attendance of the new initiates and their parents and families.

Approximately 50 student initiates, five honorary members, and over 130 guests witnessed the initiation and installation ceremonies and enjoyed a delicious meal together amidst beautiful long-stemmed red roses at each dining table. The honorary members included William Knox, professor of English, David Bonsall, director of Student Activities and Leadership Programs, Rachel Harris, assistant director of Student Activities and Leadership Programs, Peter Holliday, Director of Student Support Services, and Alfred N. Joyal, Provost and

Vice President for Academic Affairs.

Laura Soldner and William Knox, professors of English and advisors to the chapter, were instrumental in bringing Alpha Lambda Delta to Northern Michigan University and coordinated the group's installation along with a very enthusiastic and dedicated group of student officers and volunteers. Professor Soldner had been initiated into Alpha Lambda Delta as a freshman herself!

During the days leading up to the event, the two advisors and many of the officers worked tirelessly and provided wonderful hospitality for the visiting installing officer, Dr. Susan Melson Huffman, National Vice President for Chapter Relations and Expansion. Dr. Huffman first met with the officers and advisors over a true Upper Peninsula meal, and the group worked out all of their plans with great enthusiasm.

The student officers and members who contributed so much to the successful installation included president Kelly Passinault, vice president Tiffany Gillsdorf, secretary Lauren Johnson, treasurer Nicholas Place, editor Grant Slusher, historian Johanna Boyle, social chair Alexander Buck, fundraising chair Raquel Fendley, and installation committee members Karlyn Anderson, Stephanie Peck, Amy Donati, and Kristen Mueller.

LYNDON STATE COLLEGE

November 7, 2004

Lyndonville, Vermont

By Glenda Earwood

The installation of the Alpha Lambda Delta chapter at Lyndon State College Lyndonville, Vermont was held on Sunday, November 7, 2004 at 3:00 p.m. in the Lyndon Outing Club near the Lyndon State College campus. The Lyndon Outing Club, a public ski area owned by the community, featured hardwood tables and benches, a stone fireplace, and a picturesque view of the ski slopes. Joshua Carpenter, a faculty member in Psychology, was instrumental in advising the charter group and serves as the Faculty Adviser. Before the installation ceremony, the installing officer, Dr. Glenda Earwood met with the officers and adviser. Many parents and family members from as far away as New Hampshire and Rhode Island came to celebrate the recognition cer-

emony.

To begin the ceremony the students gathered in the back of the room and arranged themselves in alphabetical order. Dr. Carpenter and Dr. Earwood followed by the soon to be installed officers led the prospective initiates to the front of the room. Dr. Earwood began the ceremony by commenting that this was her first trip to Vermont and how pleased she was to be here for this event. The students rose to repeat the Alpha Lambda Delta pledge. After Dr. Earwood called their name and each new initiate signed the chapter roll, received his or her certificate and jewelry from Adviser Joshua Carpenter.

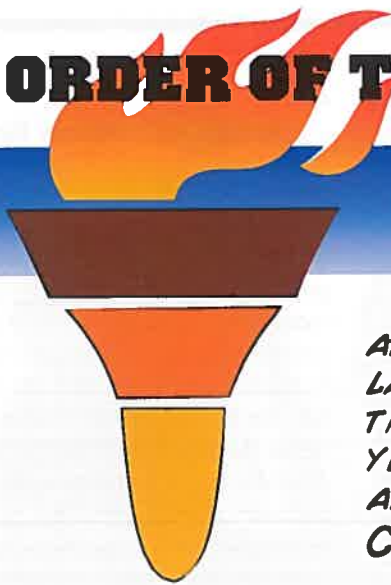
After the induction of the student members, Dr. Joshua Carpenter was initiated as an honorary member. Dr. Carpenter received his bachelor's degree in psychology from Oberlin College. He has been at Lyndon State for three years.

The chapter officers were installed by Dr. Carpenter: President – Teresa Inman and Vice President – Jason Dubois.

After the officers' installation, Dr. Earwood announced that it was her pleasure to install the new Alpha Lambda Delta chapter on behalf of the National Council. Upon presentation of the national charter to the chapter by Dr. Earwood, chapter president Teresa Inman accepted the charter and made remarks. Teresa thanked those who had been involved with getting the chapter started especially Rebecca Louzan Smith, former chapter president, who was instrumental in establishing the chapter and writing the chapter petition. Teresa invited the new members and their guests to a reception of fruit, vegetables, Vermont cheese, and assorted meats. A cake with a picture of the Alpha Lambda Delta crest completed the refreshments. After the ceremony ended, several pictures of the new initiates were taken. Congratulations to each member were extended by Dr. Earwood.

THE ORDER OF THE

TORCH



**AT THE 2004 ANNUAL MEETING, THE NATIONAL COUNCIL OF ALPHA LAMBDA DELTA VOTED TO AWARD THE ORDER OF THE TORCH TO THREE OUTSTANDING CHAPTERS FOR THE 2004-2005 ACADEMIC YEAR. THESE CHAPTERS HAVE EXEMPLIFIED THE STANDARDS OF ALPHA LAMBDA DELTA FOR THE PAST YEAR!
CONGRATULATIONS!**

UNIVERSITY OF TEXAS - AUSTIN

October 30, 2004

Presented by Melinda Koonce

Melinda Koonce, Council Member-At-Large of National Alpha Lambda Delta presented the Order of the Torch Award to the Alpha Lambda Delta chapter at The University of Texas at Austin on Saturday, October 30, 2004, at 3:00 p.m. The ceremony took place in the Lone Star Room of the Frank C. Erwin, Jr. Special Events Center during Parents' Weekend when approximately 2,000 parents/family members come to visit the campus and their children/relatives.

Prior to the ceremony, one of the chapter Advisors, Mr. John Dark, Student Development Specialist II, was quite busy with program logistics and helping put the finishing touches to the room before ushering in guests for the event. The Order of the Torch presentation took place as part of the Fall Induction Ceremony. There were about 100 people in the audience that consisted of family members and guests.

The event began with one of the chapter Advisors, Mr. Paul Pedersen, Assistant to the Vice President for Student Affairs, giving welcome remarks and introductions of the officers, award recipients, freshmen professors, and Ms. Koonce from National ALD. Mr. Pedersen recalled his many years of working with the honor society and how active the chapter was both on campus and in the community.

The ALD Officers from 2003-04 that were involved in activities and the effort to win the Order of the Torch included: Angie

Kuo, Adil Ali, Athena Yang, Ulyana Charikova, David Tran, Anjali Bapat, and Lingling Tong.

Plaques and remarks recognizing two outstanding freshman professors were presented by April Sadler and Donna Tran, Vice Presidents for Alpha Lambda Delta and Phi Eta Sigma, respectively. Elizabeth A. Hedrick, English Professor, and Stephen L. Ross, Architecture Professor, were both recognized for being two of the Outstanding Freshmen Professors. As part of the acceptance letter to join the local chapter of ALD and PES, the prospective members had to choose a favorite professor and write about the qualities that made the teachers special. Both Professors gave acceptance speeches and mentioned how impressed they were with the honor society.

Ms. Koonce then gave a short speech about National ALD and the history and criteria for Order of the Torch, also highlighting several activities of the local chapter including Explore UT and Honors Day, just two of the many events portrayed in UTA's beautiful scrapbook. The Order of the Torch award was presented as the officers unfurled the banner, amid much applause. Ms. Koonce finished by encouraging the chapter to stay active and compete for the Maintaining the Flame Award and reminding the members that each and every one of them can make a difference in the world and already do by their involvement in the world around them.

The chapter officers then conducted the New Member Induction Ceremony, with 103 people being inducted to ALD.

The ceremony was followed by general announcements, picture taking, and a delicious reception.

UNIVERSITY OF MARYLAND

November 16, 2004

Presented by Dr. Susan Huffman

Dr. Susan Melson Huffman, Vice President for Chapter Relations and Expansion, presented the Order of the Torch Award to the University of Maryland—College Park chapter on Tuesday, November 16, 2004. The meeting was held at the campus Armory, and over one hundred members of the chapter attended the general meeting to learn about local and national scholarship and fellowship opportunities and to hear tips about presenting oneself in a resume or on applications.

After informative presentations by the two chapter advisors, Dr. Nina Harris and Dr. Kathy Beardsley, the current chapter president, Kate Daly introduced Dr. Huffman who spoke to the many members and officers about the history of the Order of the Torch Award and the strong competition in this year's selection process. Dr. Susan Huffman noted several of the service and philanthropy activities that last year's chapter accomplished, and she shared examples from the well-organized chapter scrapbook. She noted that the chapter was well respected across campus as evidenced in the letter of support written by Dr. Marsha Guenzler-Stevens, Associate Director of the Stamp Student

Union.

Dr. Huffman emphasized the strong history of the Maryland chapter and urged the members to continue this fine tradition by striving for the Maintain the Flame Award.

After the Torch banner was presented to current and past officers, Kate gave Dr. Huffman a University of Maryland sweat-shirt as a souvenir from her visit.

The members were then informed about the evening's service project that involved each of them creating Thanksgiving cards for a local children's hospital. Over the next several minutes, over one hundred colorful greeting cards were artistically produced!

While making the cards, the members enjoyed an assortment of tea cookies, cupcakes, and soft drinks.

PURDUE UNIVERSITY

November 21, 2004

Presented by Dr. Katherine Beardsley

On Sunday, November 21, 2004, on a beautiful crisp cold afternoon in Lafayette, Dr. Katherine Pedro Beardsley, Council Member at Large, National Alpha Lambda Delta, presented to the Purdue University Chapter of Alpha Lambda Delta, the Order of the Torch Award, in the Stewart Center. The occasion was not only the Presentation of the Order of the Torch Award but it was also the Chapter's Fall Initiation Ceremony. The Ceremony was attended by all of the current officers, sev-

eral past officers, the two advisors, new initiates, family and friends of the new initiates.

The Ceremony began with a warm welcome from Chapter Advisor, Dr. Susan Huffman, who is also the Vice President for Chapter Relations for National Alpha Lambda Delta. Following the welcome, Mr. Rex Fodrea, the other Chapter Advisor gave an overview of the events for the afternoon. The Initiation Ceremony was presided over by President Marshall Songer, along with officers: Vice President, Mallory Michalke, Treasurer, Laura Delaney, Secretary, Zhumei Meng, Historian, Lynn Rostran and Senior Advisor, Mark Triboletti (who is also the Past-President of the Chapter) and the two Chapter Advisors. Over 70 students were initiated into Alpha Lambda Delta. In addition, Mary Jane Matranga, a faculty member in the Apparel Design and Technology Program at Purdue University was initiated as an Honorary Member.

Dr. Katherine Pedro Beardsley, Member-At-Large of the National Council of Alpha Lambda Delta presented the Order of the Torch Award to the Purdue University Chapter. In Dr. Beardsley's remarks to the now new members, officers, advisors and guests, she gave a review of the chapter activities which helped the chapter win the Torch Award.

In addition, Dr. Beardsley talked about outstanding students in the Purdue University Chapter. She shared with the participants that this was the second time that Purdue University had won the Order

of the Torch Award. She shared that the Chapter had also won the Maintaining the Flame Award three times. The long history of Purdue University having members win national scholarship awards was shared along with recognizing the three members who had distinguished themselves this past year

by being selected for national scholarships. Mark Triboletti and Steven Schlenk were recognized for winning National Joanne Trow Sophomore Scholarship Awards and Megan Durr, Emily Bondus, and Scott Keller won National Alpha Lambda Delta Graduate Fellowship Awards.

In commending the Chapter for their wonderful work this past year, Dr. Beardsley also talked about important life lessons that many of the members and officers had learned from their participation and planning of their various Chapter programs. The officers had set clear goals. They knew what they wanted to accomplish. Through effective communication with their members, they were able to have great participation by the membership. The programs this chapter has planned demonstrated an incredible commitment to collaboration and cooperation with each other and with others.

Dr. Beardsley encouraged the new members to take advantage of the incredible opportunities the Purdue Chapter has developed for members to become involved and assume leadership roles. She challenged the current officers to continue the success of last year officers and reminded the current officers of the Maintaining the Flame Award and the importance of applying for the award this year.

Recognition was also given to Chapter Advisor, Dr. Susan Huffman, who has been nominated as the Outstanding Advisor of the Year a number of times by the officers Dr. Huffman has worked with. Dr. Beardsley thanked Dr. Huffman for her guidance and support of the many students she has worked with during the years. She also thanked Dr. Huffman for the work she has done and continues to do in her role on the National Council as Vice President for Chapter Relations. Dr. Huffman was enthusiastically applauded by her officers, new members and guests.

Following the congratulatory remarks, President Marshall Songer made closing remarks and invited the new Alpha Lambda Delta members and their guests for a very nice dessert reception held in the Faculty Club of the Purdue Memorial Union.



2004-2005

NATIONAL COUNCIL DIRECTORY

PRESIDENT

Dr. James G. Stemler

Associate Dean and Director, Honors Program
University of Portland
5000 N. Willamette Blvd.
Portland, OR 97203
503-943-7221, Fax: 503-943-7804
stemler@up.edu

VICE PRESIDENT FOR

FINANCE AND LONG-RANGE PLANNING

Dr. Herman "Butch" Hill

Co-Director, The Cutler Scholar Program
Ohio University
Trisolini 201
Athens, OH 45701-2979
740-593-4269, Fax: 740-593-4276
hill@ohiou.edu

VICE PRESIDENT FOR

CHAPTER RELATIONS AND EXPANSION

Dr. Susan Melson Huffman

General Manager – Hilltop Apartments
23-5 Hilltop Dr.
West Lafayette, IN 47906
765-494-2390, Fax: 765-494-4815
smhuffman@purdue.edu

ARCHIVIST

Ms. Ellen Swain

Archives Research Center
University of Illinois
1707 S. Orchard
Urbana, IL 61801
217-333-7841, Fax: 217-244-4300

EDITOR AND HISTORIAN

Dr. Michael R. Nichols

Staff Psychologist
SSB CPO 52
Eastern Kentucky University
Richmond, KY 40475-3152
859-622-1303, Fax: 859-622-1305
mrnichols@adelphia.net

COUNCIL MEMBERS AT LARGE

Dr. Katherine Pedro Beardsley

Assistant Dean, College of Behavioral & Social Sciences
2141 Tydings Hall
University of Maryland
College Park, MD 20742
301-405-1692, Fax: 301-314-9086
kbeardsley@bsos.umd.edu

Dr. Harry Hale

Professor of Sociology
University of Louisiana at Monroe
Department of Sociology
Monroe, LA 71209
318-342-1437, Fax: 318-342-1431
hale@ulm.edu

Melinda Koonce

Coordinator, UC Reservation Services
University of Houston
210 University Center
Houston, TX 77204-3038
713-743-5285, Fax: 713-743-5282
mkoonce@uh.edu

Kim Reaves

1114 South College St. Apt. 10-304
Auburn, AL 36832
205-566-5717
reavekm@auburn.edu

Brittany Sheppe

1100 Wheat St. Apt. 902
Columbia, SC 29201
803-765-9248, Cell: 803-546-1905
sheppeb@mailbox.sc.edu

National Office

PO Box 4403, Macon, GA 31208-4403
UPS/FedEx:
328 Orange St., Macon, GA 31201
1-800-9-ALPHA-1
Fax: 478-744-9924

WWW.NATIONALALD.ORG

